

Teanaway Community Forest

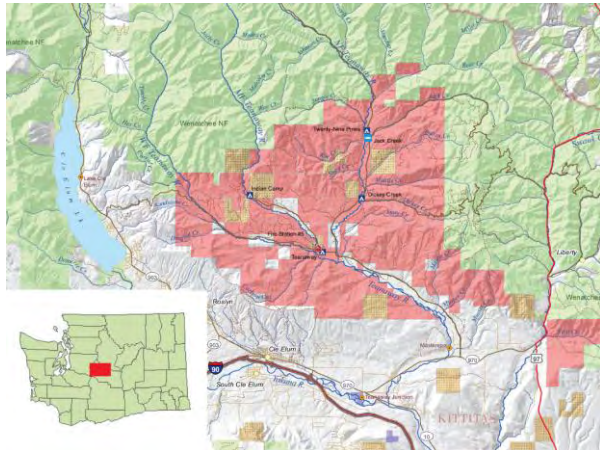


Washington
Department of
**FISH and
WILDLIFE**



WASHINGTON STATE
Natural Resources

Teanaway Community Forest Q & A



On October 1, 2013, the Washington State Department of Natural Resources purchased Washington's first state-managed Community Forest. The Teanaway Community Forest is a 50,272-acre property situated at the headwaters of the Yakima Basin watershed.

DNR will collaboratively manage the forest with Washington Department of Fish and Wildlife (WDFW), with significant public input from a community-based advisory committee.

What is a Community Forest?

The Community Forest Trust model is designed to give communities a tool to work with DNR to preserve the forests they love and have a say in how they are managed.

Why did the state buy the Teanaway Community Forest?

The Teanaway Community Forest was identified as critical habitat for the conservation and restoration of many species, especially fish. The Teanaway Community Forest is also a key component of the Yakima Basin Integrated Plan, which is designed to safeguard the Yakima Basin water supply and associated habitat, and to support the economy by preserving working lands and recreational opportunities.

How will the public be involved in the management of the Teanaway Community Forest?

DNR and WDFW will engage the local community and interested stakeholder groups in a discussion about their management priorities. As part of the Community Forest planning process, interest groups will be identified and included in the process, and a local advisory committee will be set up in cooperation with local governments. DNR and WDFW will use the local advisory committee as a source of advice and comment on forest management options. The Teanaway Community Forest planning process will establish management objectives. DNR and WDFW will then collaboratively manage the land to meet those objectives.

Who will fund the management of the Teanaway Community Forest?

In addition to approving funds this year for the Teanaway land purchase, state lawmakers appropriated about \$1 million for initial forest maintenance. Lawmakers will provide additional maintenance and operation funds in the future through the normal state budget process for state-owned lands.

“The Teanaway is an extremely valuable area ecologically and to the community as a whole. It plays a pivotal role in the continued success of the Yakima Basin Integrated Plan.”

**—Urban Eberhart
Yakima Basin Irrigator**

Can I still camp at the campgrounds? Will campfires be allowed?

Teanaway West Fork and 29 Pines Campgrounds are open to the public as of October 2013. Please be sure to pack out your garbage, as services are unavailable at the campgrounds. Campfires are currently allowed in campfire pits at the 29 Pines and Teanaway West Fork Campgrounds. Be sure to check DNR's website for any temporary burn restrictions at www.dnr.wa.gov.

Will I need a Discover Pass or WDFW Vehicle Access Pass?

At this time you do not need a Discover Pass or WDFW Vehicle Access Pass to visit the Teanaway Community Forest. This issue will be revisited and discussed during the community engagement process to develop the management plan.

How do I apply to serve on the advisory committee?

Subscribe to the Teanaway Community Forest e-newsletter to learn more about the advisory committee and the application process. Sign up at http://bit.ly/DNR_newsletter.

What happens to the land if the Yakima Integrated Plan falls short of its water storage goals?

If certain Yakima Basin Integrated Plan objectives aren't met by June 30, 2025, the Legislature has empowered the state Board of Natural Resources, which oversees state trust lands, to keep the Teanaway as a community forest; to transfer it to the Common School Trust for commercial forestry; or to otherwise dispose of the property.

How will DNR and WDFW work together?

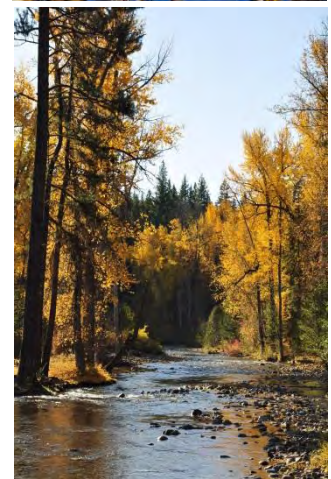
DNR owns the deed to the Teanaway Community Forest and manages the account that will receive all funding for the forest. WDFW holds a robust

Habitat Restoration and Working Lands Easement that grants full and equal land management responsibilities. Both agencies agree to collaboratively and comprehensively manage the Teanaway Community Forest upon the principle of joint decision-making and agree that all land management activities for the Teanaway Lands will require the mutual assent and approval of all parties. They also agree to collaborate and jointly produce all legislative and budget appropriation requests for the Teanaway Community Forest.

What is the vision for the Teanaway Community Forest?

DNR and WDFW agreed to "a common vision for managing the Teanaway Lands" to meet with the following objectives, with the details to be worked out in the Management Plan:

- Protect and enhance the water supply and protect the watershed
- Maintain working lands for forestry and domestic livestock grazing while protecting key watershed functions and aquatic habitat
- Maintain and, where possible, expand recreational opportunities consistent with watershed protection for activities such as, but not limited to, hiking, fishing, hunting, horseback, riding, camping, birding, and snowmobiling
- Conserve and restore vital habitat for fish (including steelhead, spring Chinook, and bull trout) and wildlife (including deer, elk, large predators, and spotted owls)
- Support a strong community partnership in which the Yakama Nation, residents, business owners, local governments, conservation groups, and others would provide advice about ongoing land management



Photos Courtesy of The Wilderness Society