

Joint Base Lewis-McChord

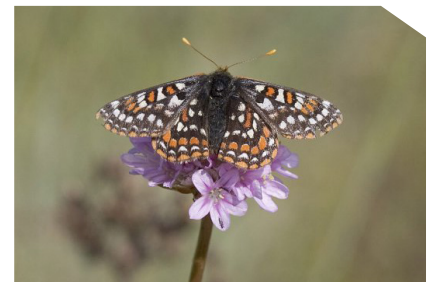
WHAT ARE SENTINEL LANDSCAPES

Through the Sentinel Landscapes Partnership, the Departments of Agriculture, Defense, and the Interior are working with a variety of partners to align resources and implement a comprehensive, multiple-tool approach to promoting and sustaining compatible land uses in a manner that protects nearby military test and training needs while benefiting ALL partners and landowners.

THE JOINT BASE LEWIS-MCCHORD SENTINEL LANDSCAPE

Joint Base Lewis-McChord (JBLM) is located in Washington State's Puget Sound and at 91,000 acres is the third largest installation in the Army, home to 43,000 soldiers and airmen. The base supports artillery and maneuver training, land-warrior system testing, and operational airlift missions, while also hosting the majority of the dwindling prairie habitat remaining in the South Puget Sound. Once covering more than 150,000 acres, this rare ecological asset now covers only 23,000 acres, with nearly 90 percent of it found on JBLM. JBLM's prairies also support most of the remaining South Sound populations of three species recently listed under the Endangered Species Act: the Taylor's checkerspot butterfly, streaked horned lark, and Mazama pocket gopher.

These listings have brought restrictions on training, while JBLM continues to bear most of the responsibility for recovering the species in the South Sound. To help shift some of this burden and promote recovery at the regional level, a diverse partnership is working to preserve, restore, and manage critical prairie habitat within the first-ever Sentinel Landscape, anchored by JBLM. Expanding the conservation toolbox to include perpetual land management support through endowments, stewardship demonstration projects, regulatory predictability for private landowners and DoD, and expanded outreach and education will help ease restrictions on the use of JBLM's training lands.



Native prairies on JBLM maneuver lands and artillery impact ranges support endangered species like the Taylor's checkerspot butterfly, so innovative efforts like the Sustainability in Prisons Project are helping reintroduce the species into lands protected and managed throughout the JBLM Sentinel Landscape.

BENEFITING WORKING LANDS

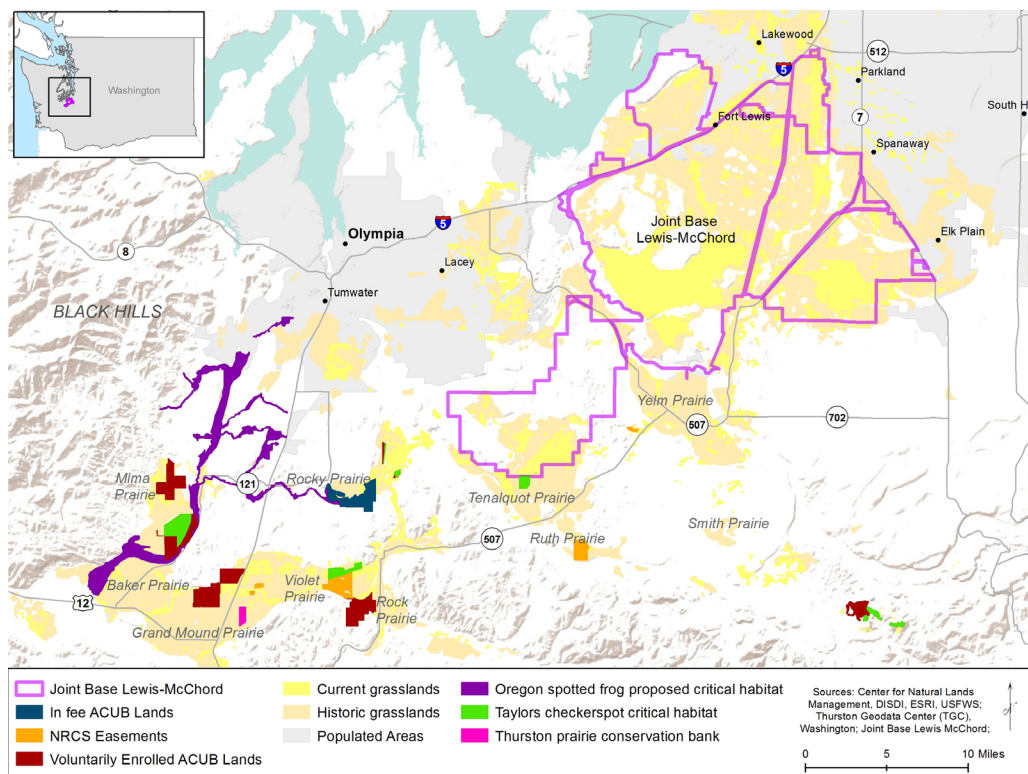
The rich landscape of working farms, forests, and ranches in this region are highly compatible with JBLM's military mission and offer opportunities for restoring native prairie and conserving species. The JBLM Sentinel Landscape designation has encouraged landowners on these private lands to work with the U.S. Department of Agriculture's Natural Resources Conservation Service (NRCS) to develop pastureland conservation plans and apply improved conservation practices. Many of these lands have, or will soon have, NRCS easements on them, managed by land trusts and other conservation organizations.

CONSERVATION OPPORTUNITIES

The JBLM Sentinel Landscape is the focus of a wide range of innovative conservation actions. Multiple properties with remnant prairie, including state- and county-owned lands and private lands purchased in-fee from willing sellers, are being managed as conservation preserves where native prairie is restored and the ESA-listed species are conserved or reintroduced. The U.S.

Fish and Wildlife Service is working with private landowners to provide regulatory certainty while simultaneously conserving the region's rarest species. In particular, the prairie habitat assessment methodology, developed for Thurston County's Habitat Conservation Plan, aims to quantify credits and debits for prairie impacts and protection or restoration. Other partners are coming together to offer unique job training and research opportunities through programs like the Veteran's Conservation Corps and the Sustainability in Prisons Project. Along with other

Joint Base Lewis-McChord Sentinel Landscape

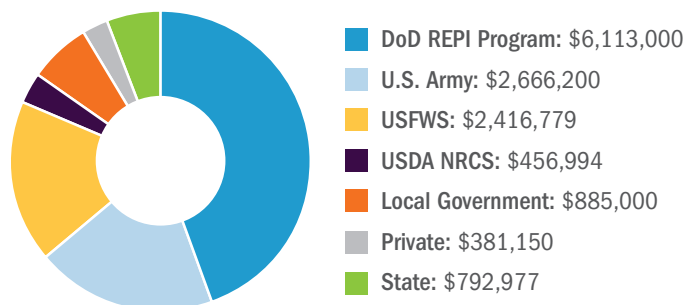


planning, monitoring, and research, restoration, and monitoring efforts, this broad coalition of stakeholders is helping to 'guard' our military, rural communities, and natural resources in the South Puget Sound.

LOOKING FORWARD

The South Sound Prairie partners will continue to support the JBLM Sentinel Landscape with ongoing technical assistance, identifying new lands for agricultural easements with NRCS's Agriculture Conservation Easement Program or buffer lands through DoD's Readiness and Environmental Protection Integration (REPI) Program, prairie habitat restoration, and native species reintroduction. Together, they hope to ensure the viability of JBLM's mission, imperiled species, and working agricultural land in the South Puget Sound.

Figure 1 Committed Sentinel Landscape Funding



PARTNERS:

- ★ Department of Defense
- ★ Center for Natural Lands Management
- ★ U.S. Department of Agricultural Natural Resources Conservation Service
- ★ U.S. Fish and Wildlife Service
- ★ Washington Dept. Fish and Wildlife
- ★ Washington Dept. Natural Resources
- ★ Washington Dept. Corrections
- ★ Washington Dept. Veterans Affairs
- ★ Thurston County
- ★ Wolf Haven International
- ★ Northwest Rangeland Trust
- ★ The Evergreen State College
- ★ University of Washington
- ★ Washington State University Extension
- ★ Oregon Zoo