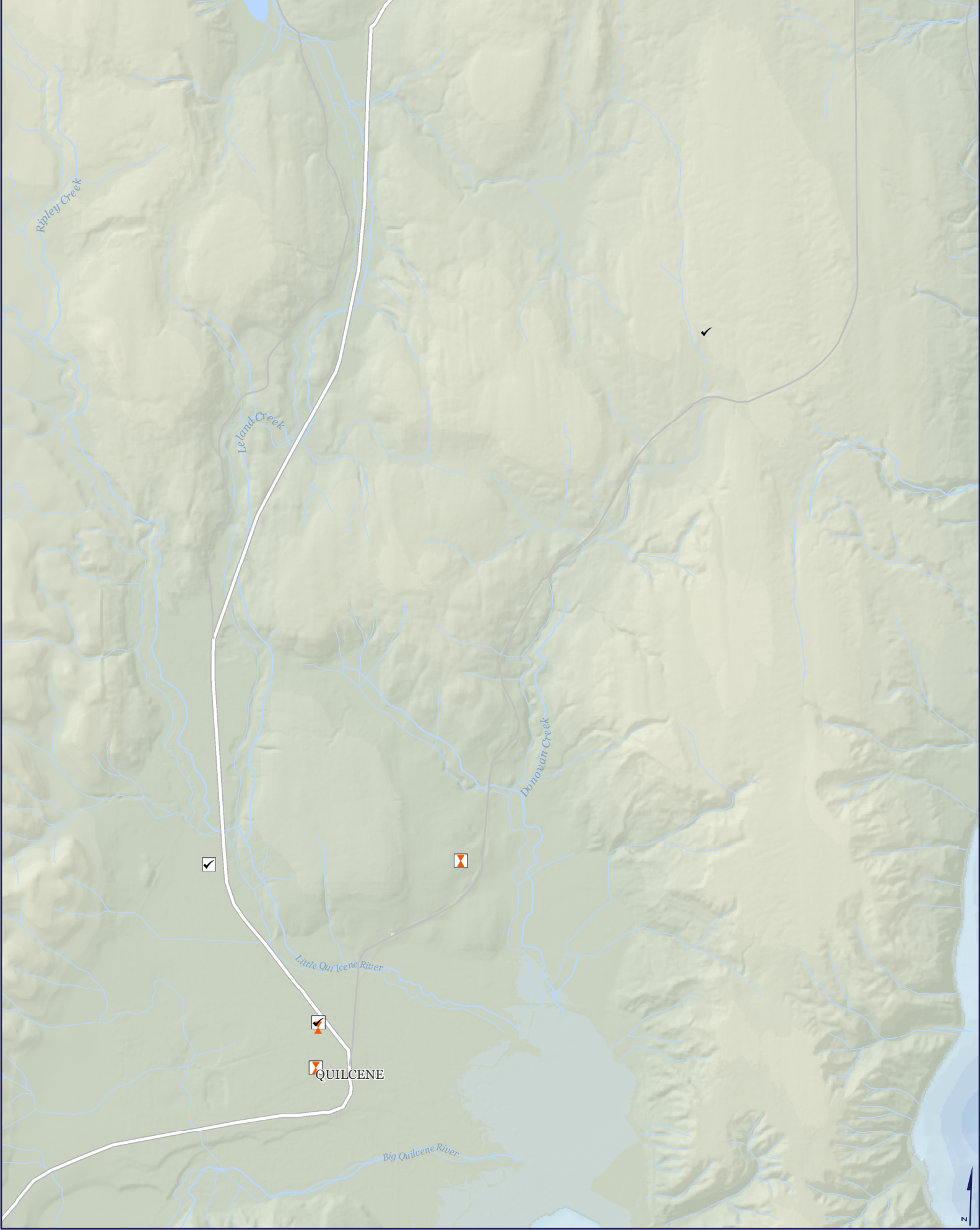


Index Grid

Pollution Hotspots Identified,
On-site Sewage System Failures Found,
and their Repair Status

Hood Canal Regional Pollution Identification
and Correction Program, Phase III
Dec. 1, 2017 - Feb. 28, 2019





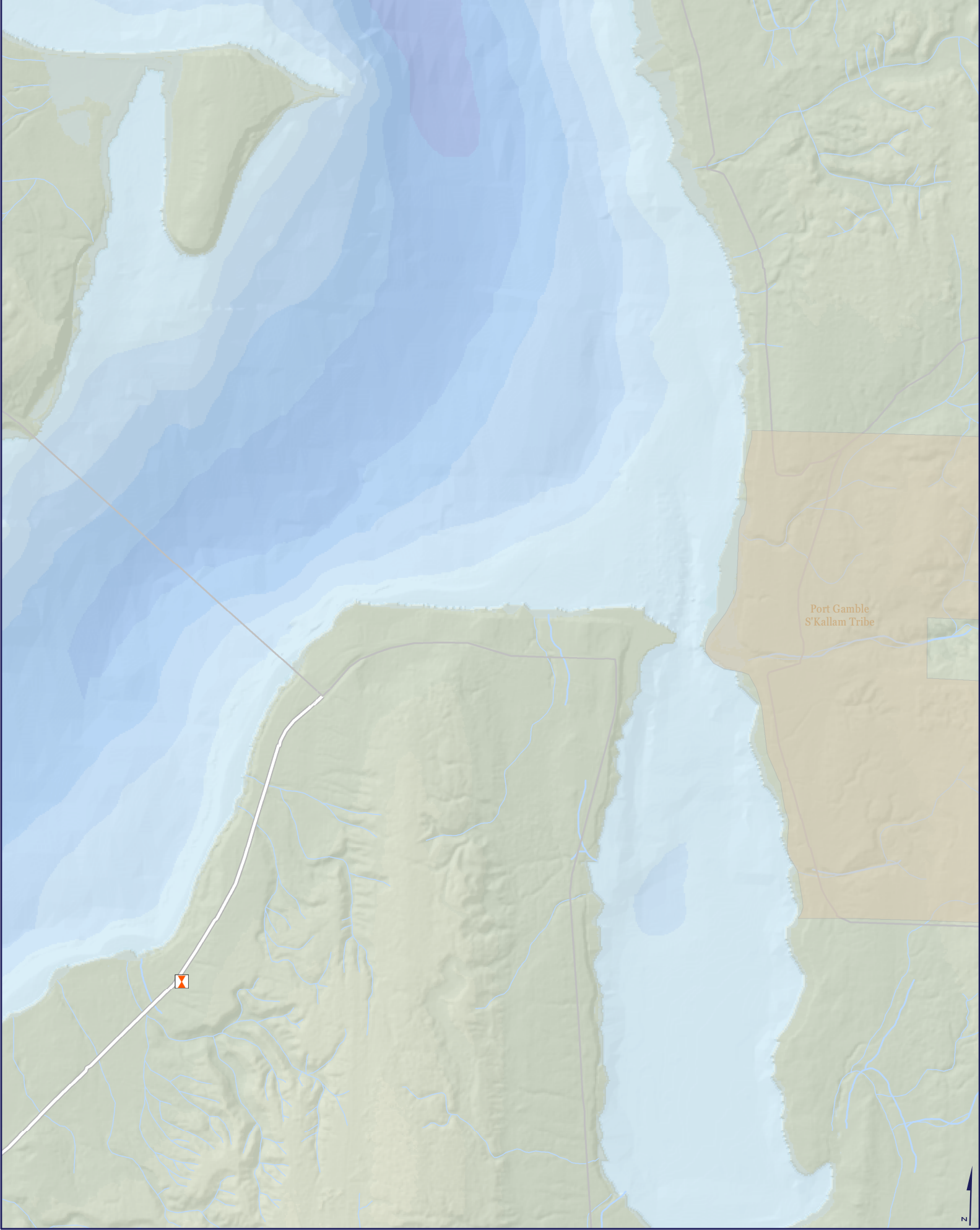
0 1,000 Feet

- ✓ OSS Repair Complete*
- ✗ OSS Repair In Progress*
- OSS Failure
- ⊠ Pollution Hotspot Closed
- Pollution Hotspot

*Repairs not associated with a current OSS failure were linked to failures identified prior to Phase III

Pollution Hotspots Identified, On-site Sewage System Failures Found, and their Repair Status





Port Gamble
S'Kallam Tribe

0 1,000 Feet

- ✓ OSS Repair Complete*
- ✗ OSS Repair In Progress*
- OSS Failure
- ✓ Pollution Hotspot Closed
- Pollution Hotspot

*Repairs not associated with a current OSS failure were linked to failures identified prior to Phase III

**Pollution Hotspots Identified,
On-site Sewage System Failures Found,
and their Repair Status**





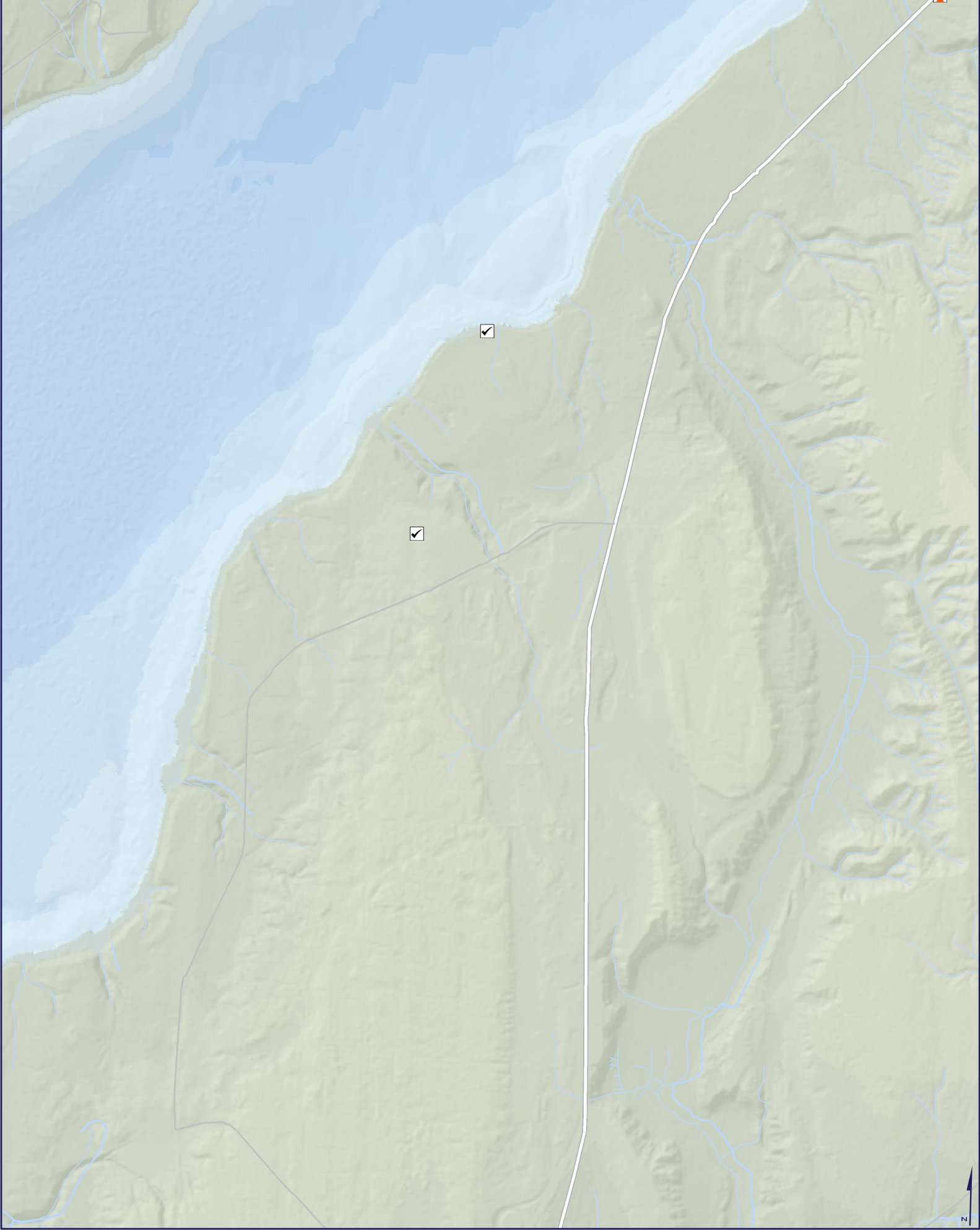
0 1,000 Feet

- ✓ OSS Repair Complete*
- ✗ OSS Repair In Progress*
- OSS Failure
- ✓ Pollution Hotspot Closed
- Pollution Hotspot

*Repairs not associated with a current OSS failure were linked to failures identified prior to Phase III

Pollution Hotspots Identified, On-site Sewage System Failures Found, and their Repair Status





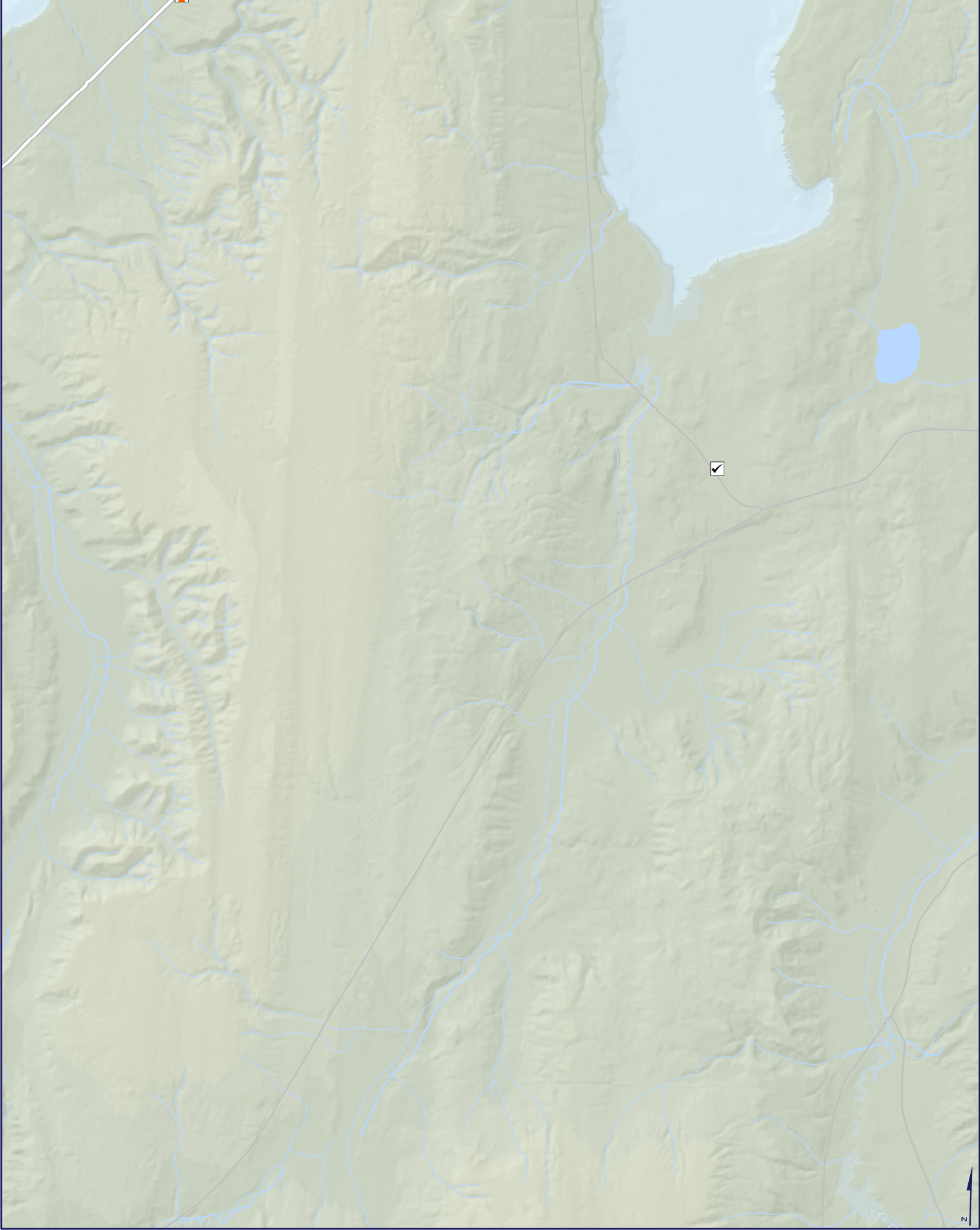
0 1,000 Feet

- ✓ OSS Repair Complete*
- ✗ OSS Repair In Progress*
- OSS Failure
- ✓ Pollution Hotspot Closed
- Pollution Hotspot

*Repairs not associated with a current OSS failure were linked to failures identified prior to Phase III

Pollution Hotspots Identified, On-site Sewage System Failures Found, and their Repair Status



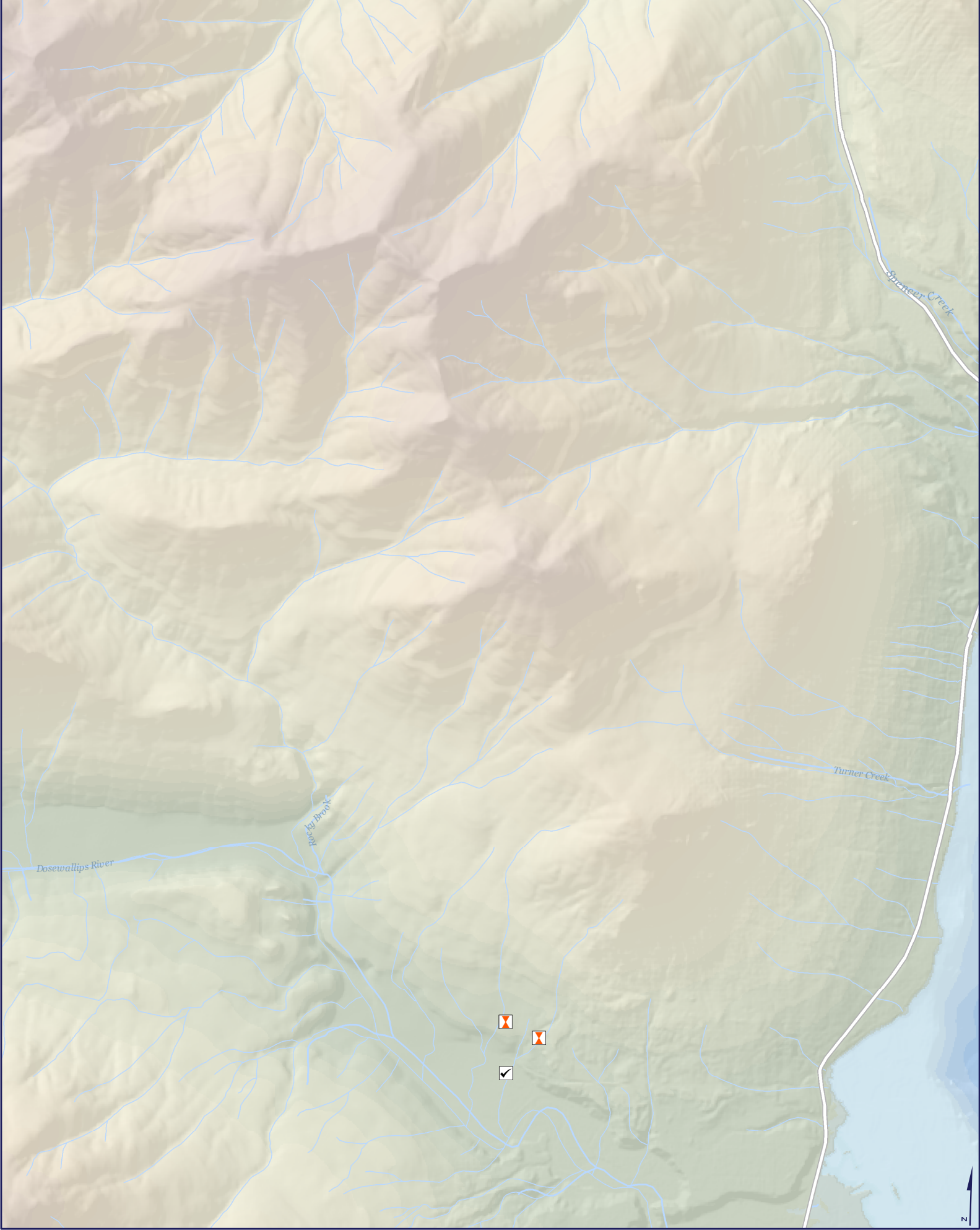


- ✓ OSS Repair Complete*
- ✗ OSS Repair In Progress*
- OSS Failure
- ✓ Pollution Hotspot Closed
- Pollution Hotspot

*Repairs not associated with a current OSS failure were linked to failures identified prior to Phase III

**Pollution Hotspots Identified,
On-site Sewage System Failures Found,
and their Repair Status**





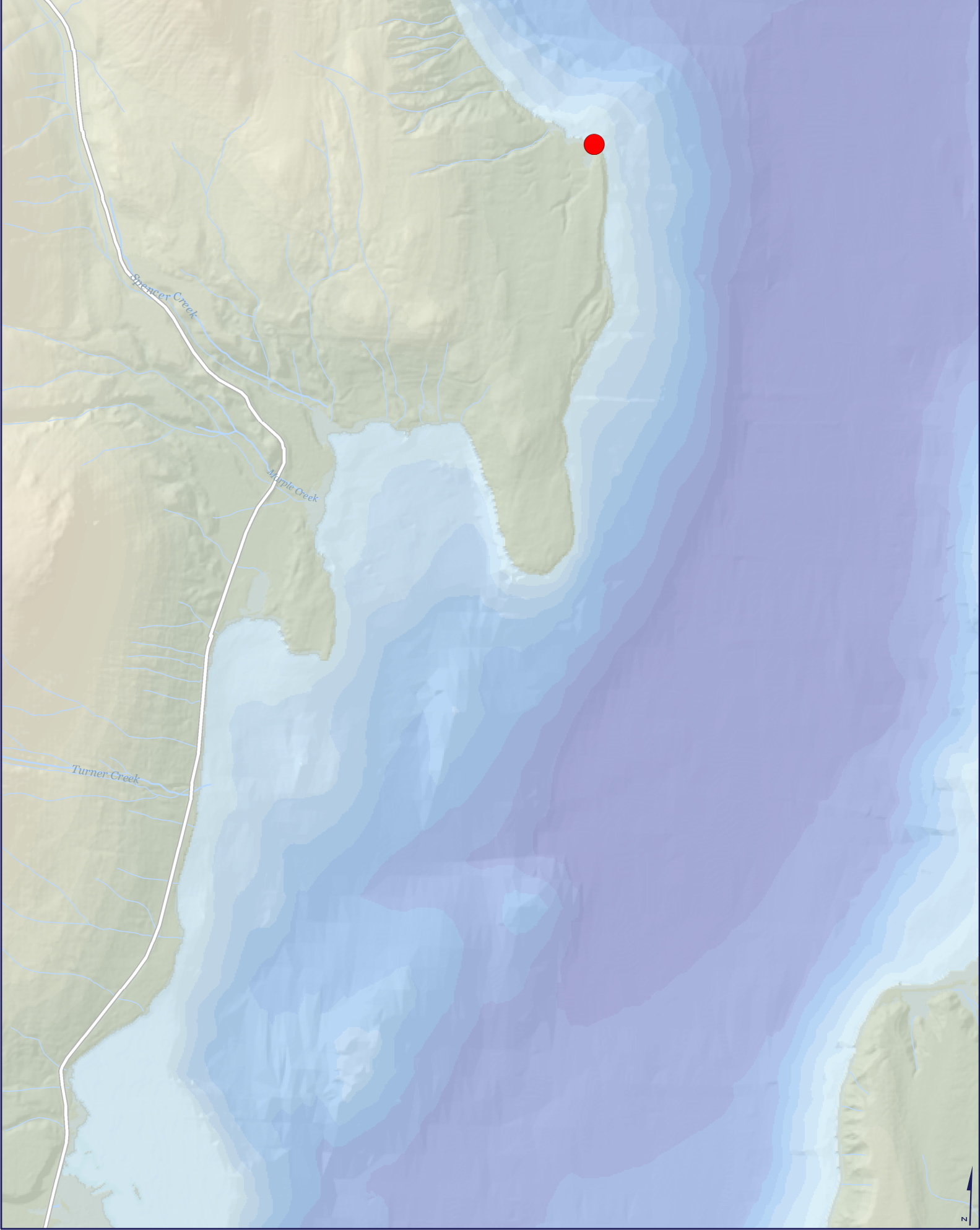
0 1,000 Feet

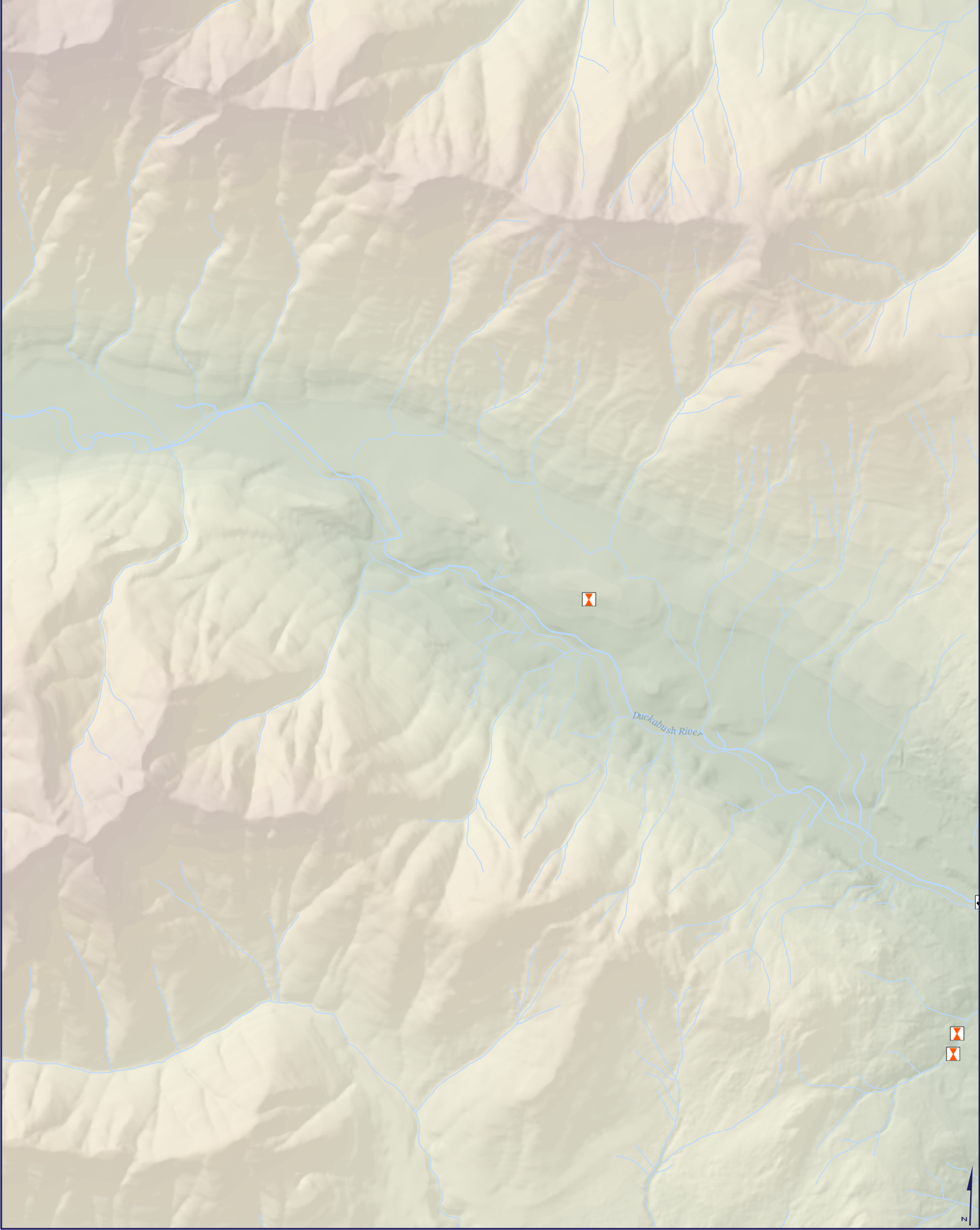
- ✓ OSS Repair Complete*
- ✗ OSS Repair In Progress*
- OSS Failure
- ⊗ Pollution Hotspot Closed
- Pollution Hotspot

*Repairs not associated with a current OSS failure were linked to failures identified prior to Phase III

Pollution Hotspots Identified, On-site Sewage System Failures Found, and their Repair Status







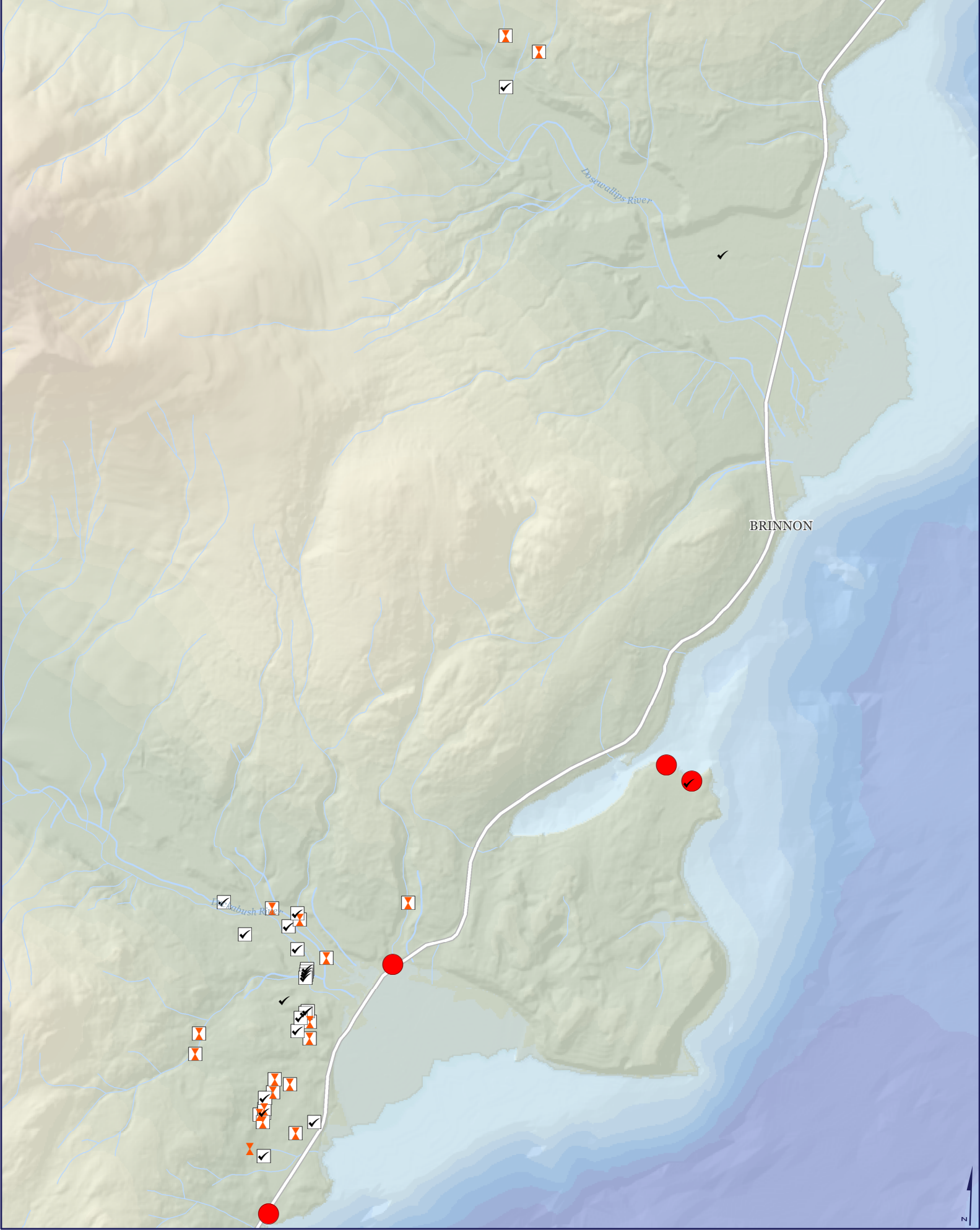
0 1,000 Feet

- ✓ OSS Repair Complete*
- ✗ OSS Repair In Progress*
- OSS Failure
- ✓ Pollution Hotspot Closed
- Pollution Hotspot

*Repairs not associated with a current OSS failure were linked to failures identified prior to Phase III

Pollution Hotspots Identified, On-site Sewage System Failures Found, and their Repair Status





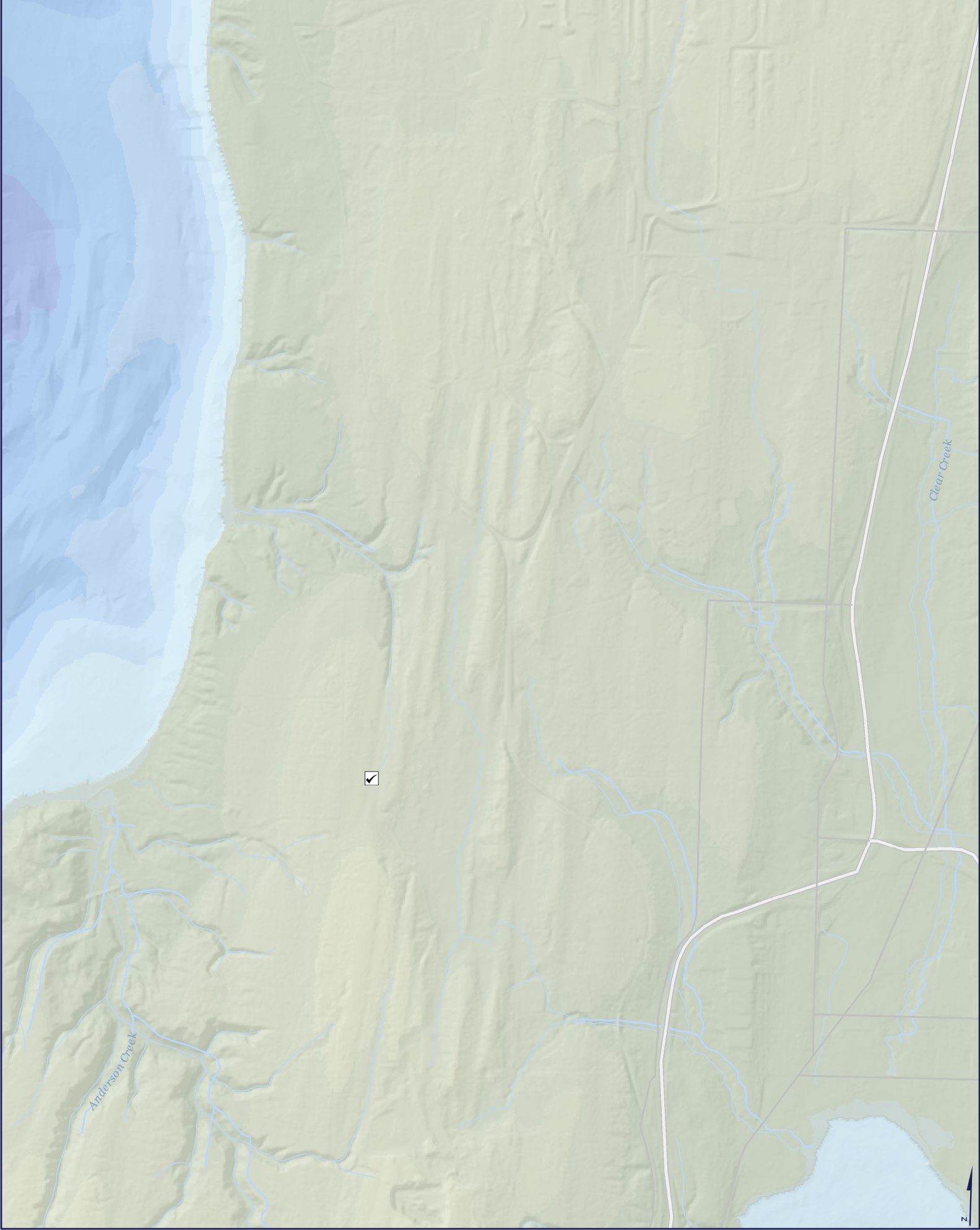
0 1,000 Feet

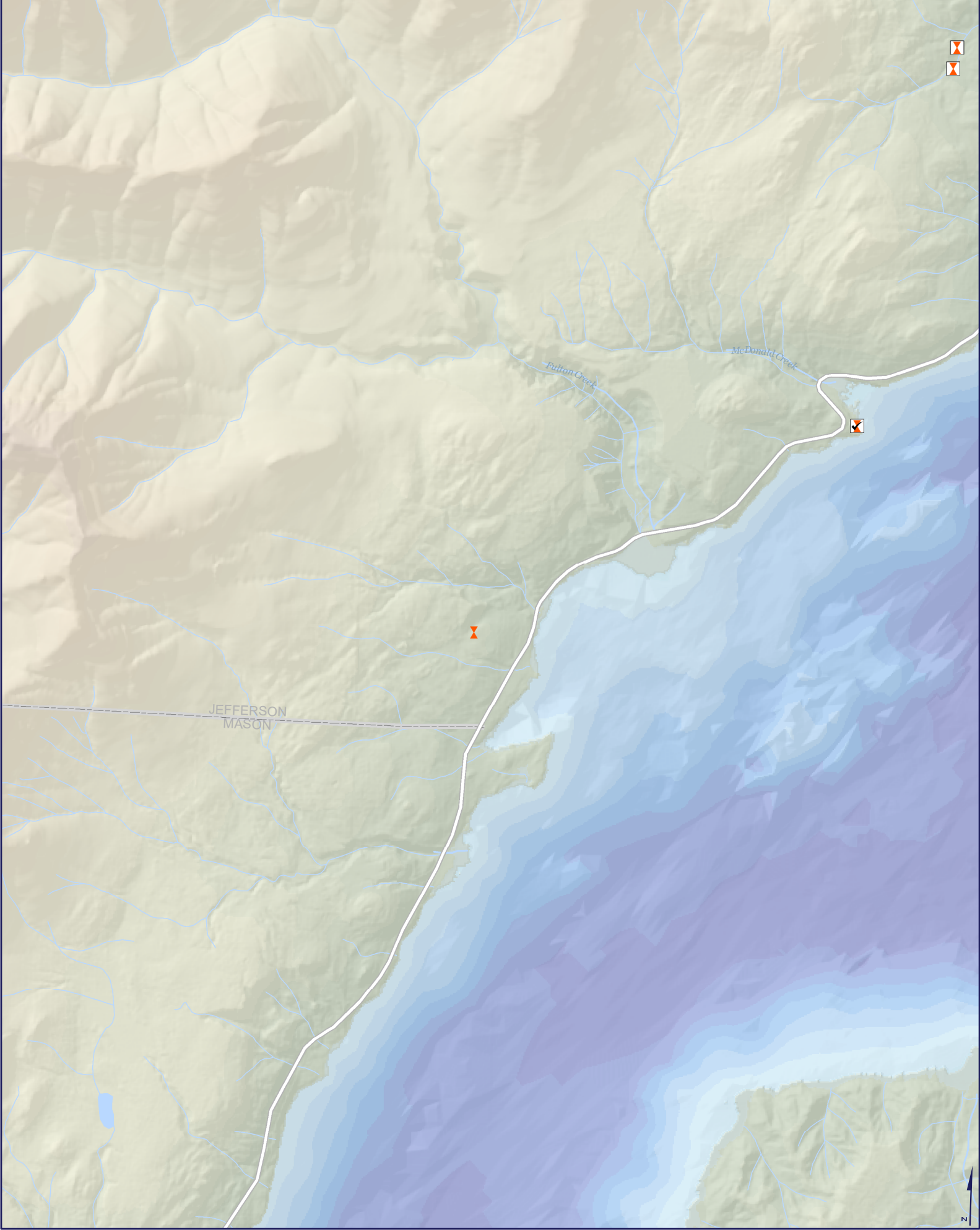
- ✓ OSS Repair Complete*
- ✗ OSS Repair In Progress*
- OSS Failure
- ✓ Pollution Hotspot Closed
- Pollution Hotspot

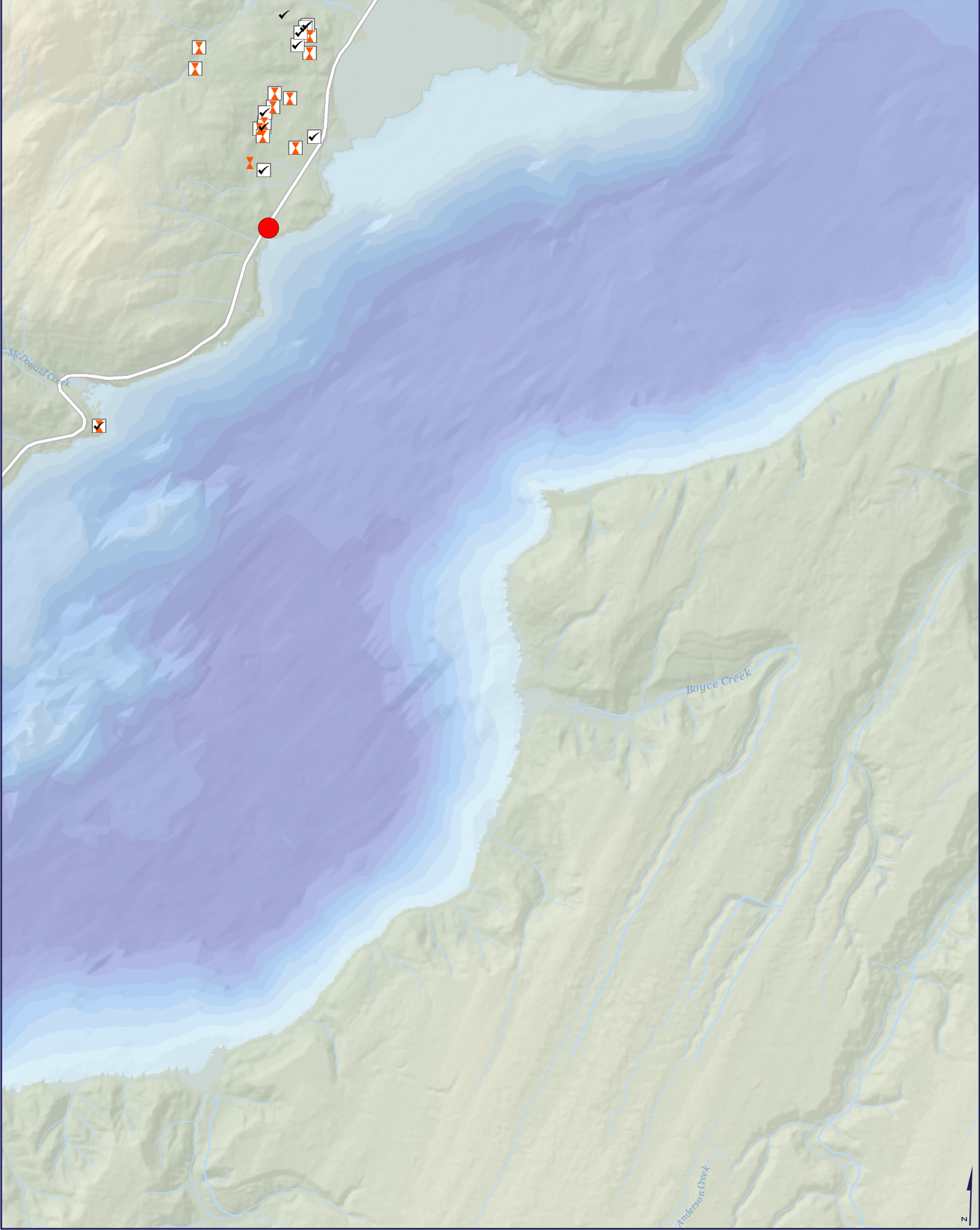
*Repairs not associated with a current OSS failure were linked to failures identified prior to Phase III

Pollution Hotspots Identified, On-site Sewage System Failures Found, and their Repair Status









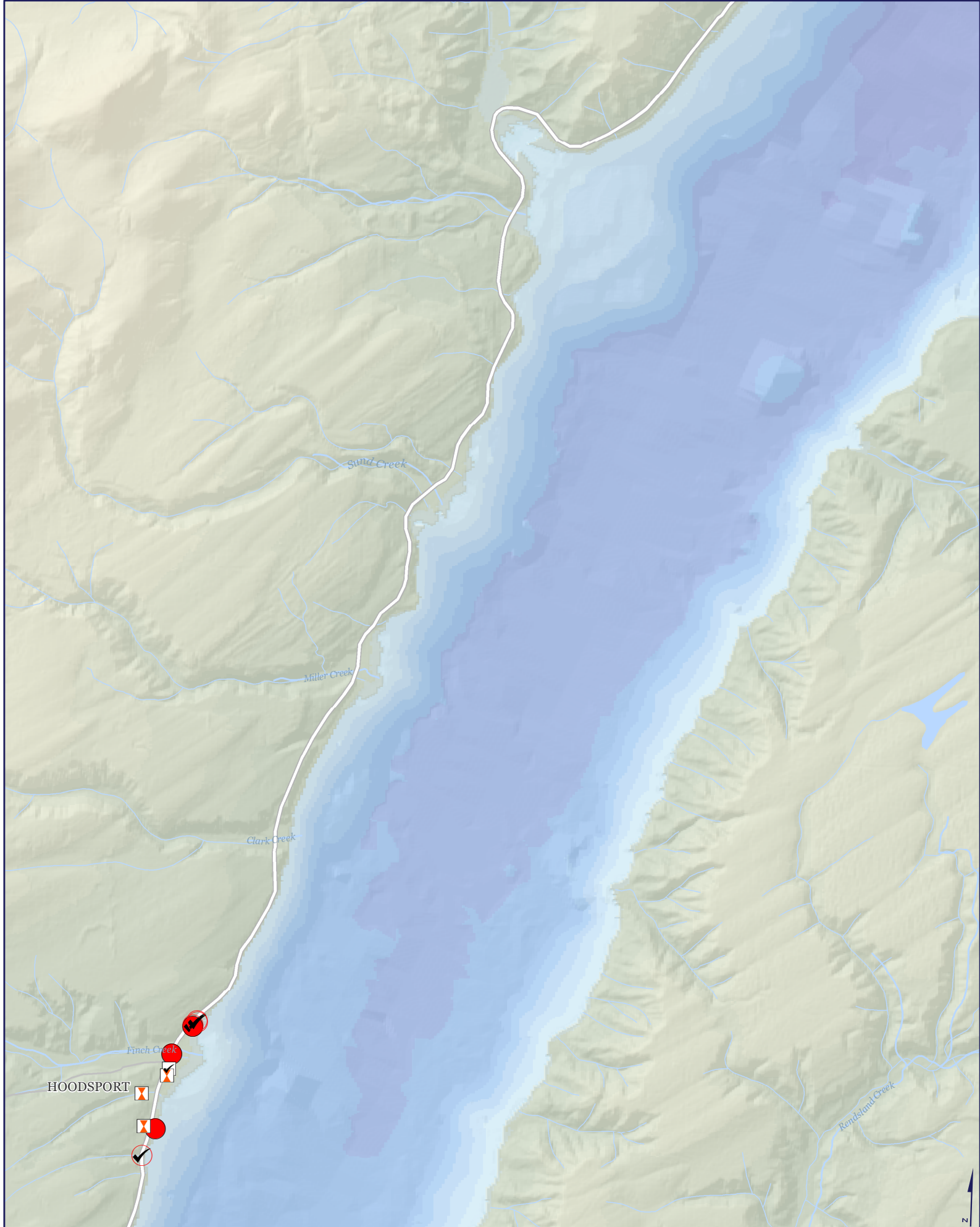
0 1,000 Feet

- ✓ OSS Repair Complete*
- ✗ OSS Repair In Progress*
- OSS Failure
- ✓ Pollution Hotspot Closed
- Pollution Hotspot

*Repairs not associated with a current OSS failure were linked to failures identified prior to Phase III

Pollution Hotspots Identified, On-site Sewage System Failures Found, and their Repair Status





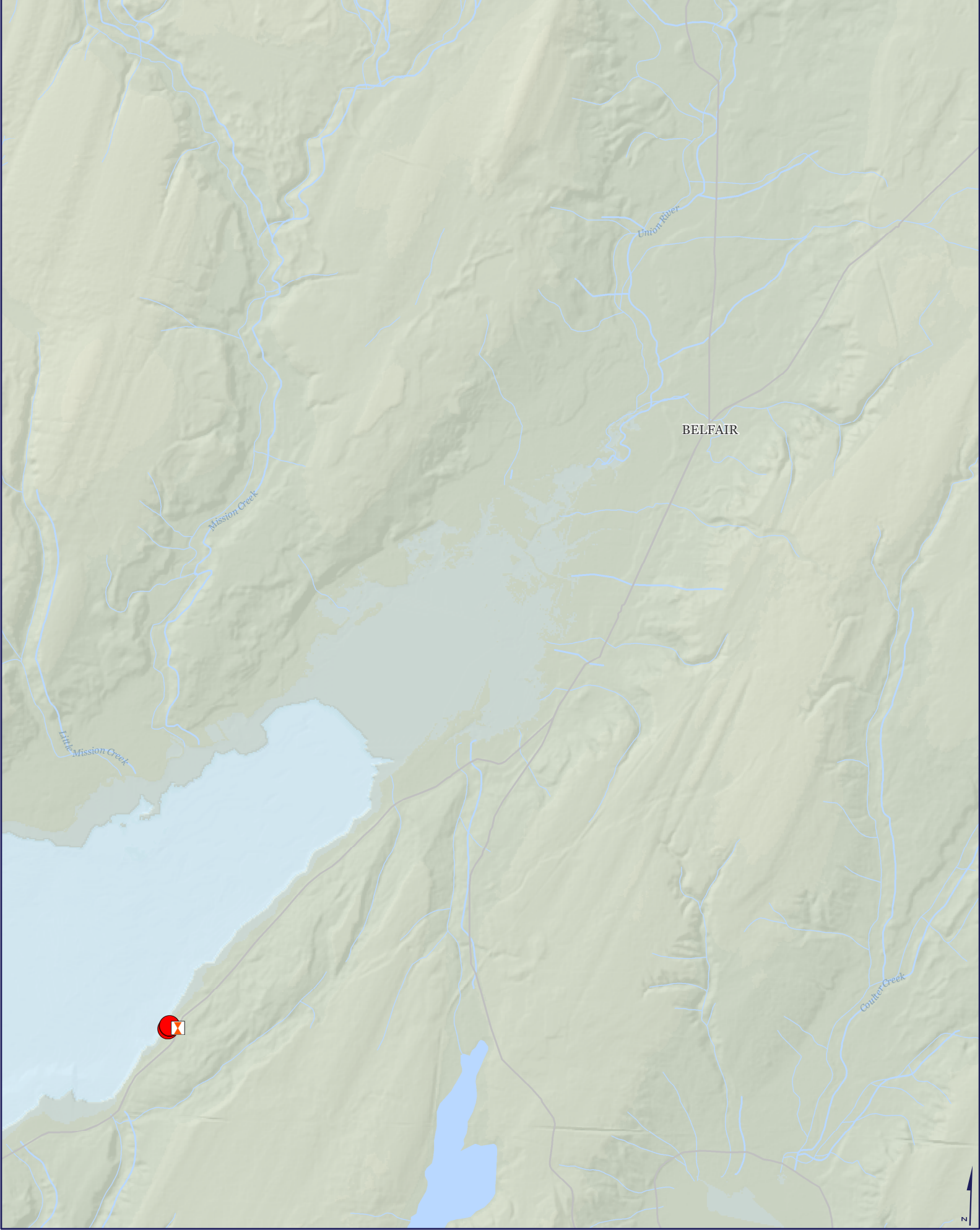
0 1,000 Feet

- ✓ OSS Repair Complete*
- ✗ OSS Repair In Progress*
- OSS Failure
- ⊘ Pollution Hotspot Closed
- Pollution Hotspot

*Repairs not associated with a current OSS failure were linked to failures identified prior to Phase III

Pollution Hotspots Identified, On-site Sewage System Failures Found, and their Repair Status





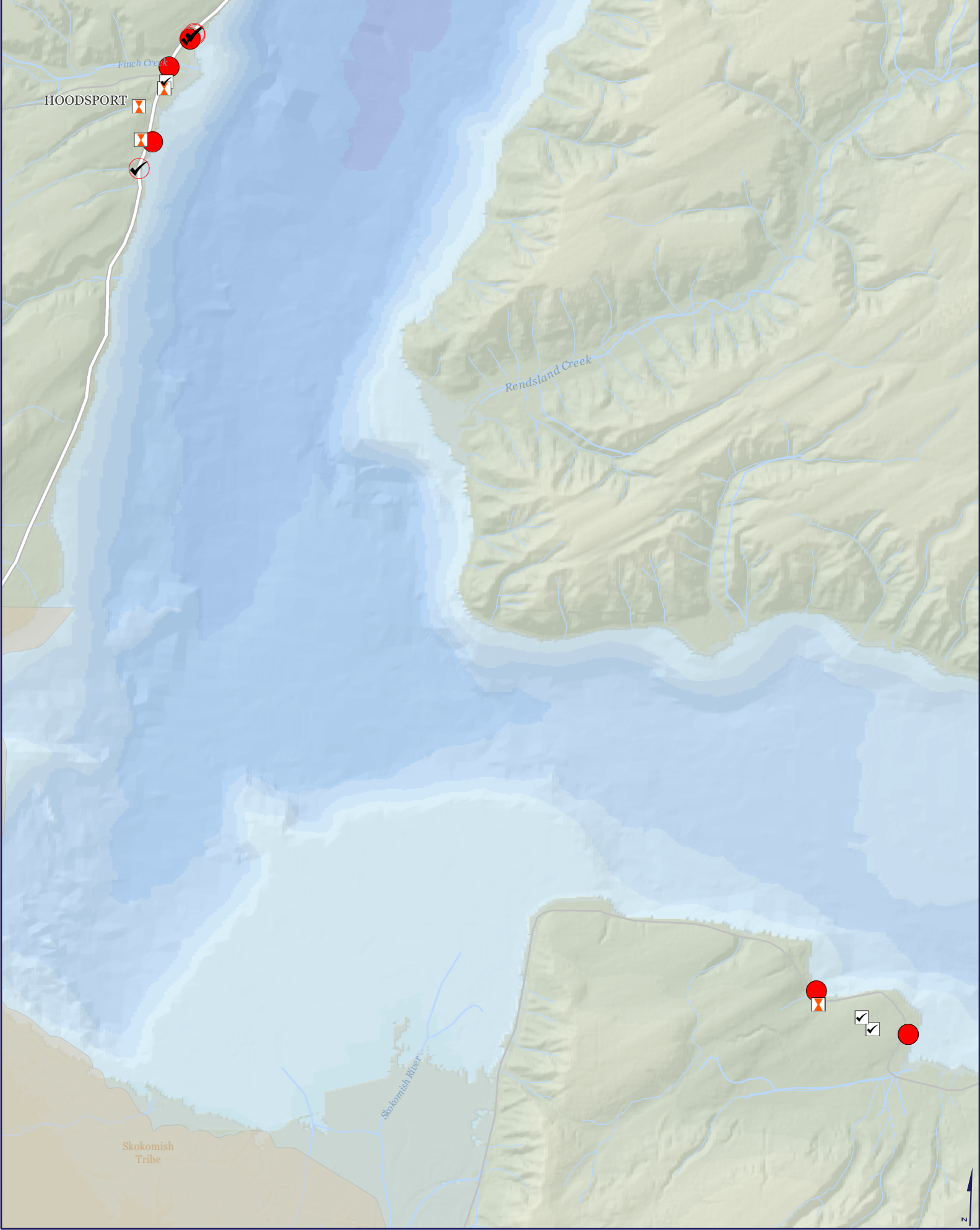
0 1,000 Feet

- ✓ OSS Repair Complete*
- ✗ OSS Repair In Progress*
- OSS Failure
- ✗ Pollution Hotspot Closed
- Pollution Hotspot

**Repairs not associated with a current OSS failure were linked to failures identified prior to Phase III*

Pollution Hotspots Identified, On-site Sewage System Failures Found, and their Repair Status





HOODSPORT

Finch Creek

Rensland Creek

Skokomish River

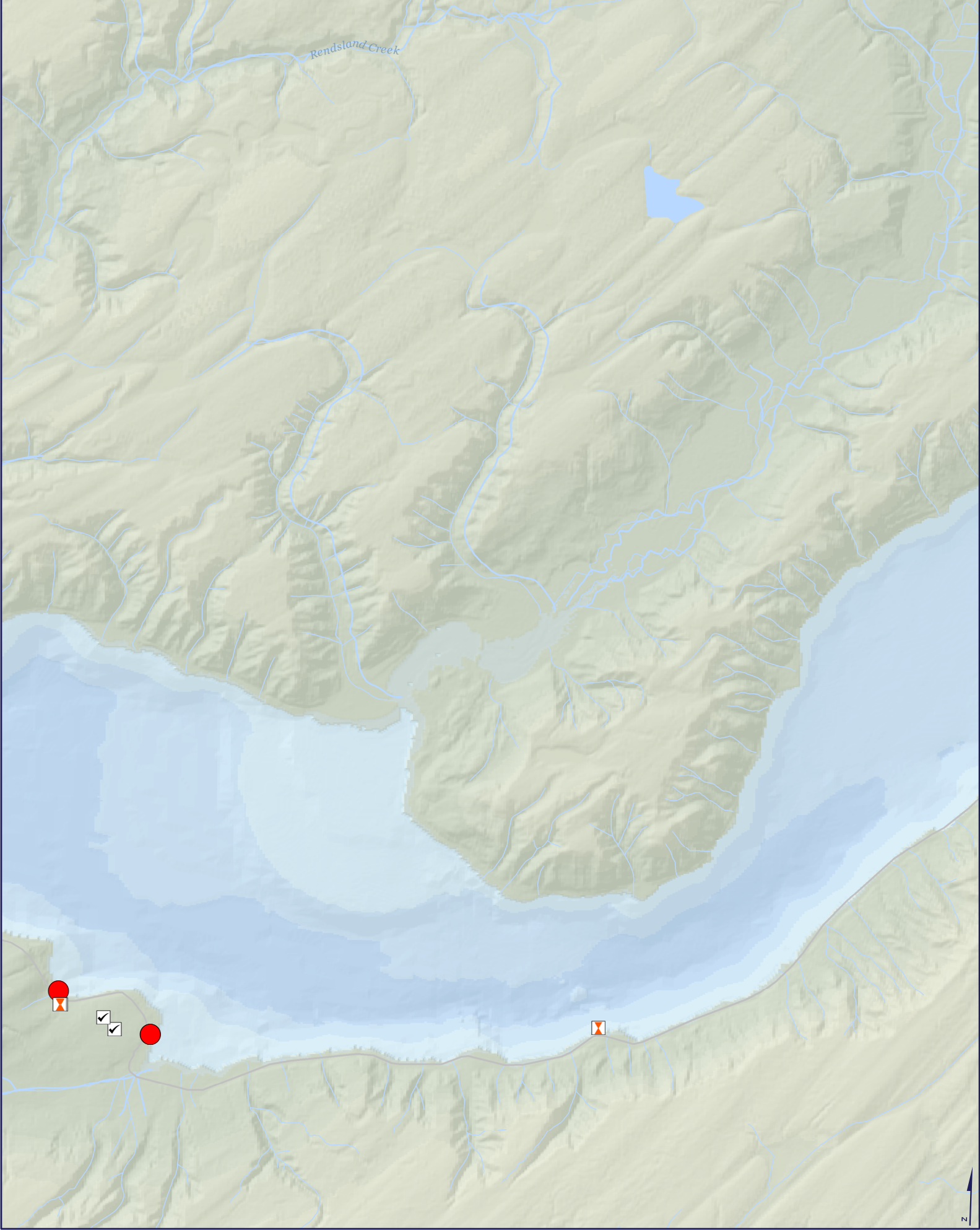
Skokomish Tribe

0 1,000 Feet

- ✓ OSS Repair Complete*
 - ✗ OSS Repair In Progress*
 - OSS Failure
 - ⊗ Pollution Hotspot Closed
 - Pollution Hotspot
- *Repairs not associated with a current OSS failure were linked to failures identified prior to Phase III

Pollution Hotspots Identified, On-site Sewage System Failures Found, and their Repair Status





Rendstand Creek

0 1,000 Feet

- ✓ OSS Repair Complete*
 - ✗ OSS Repair In Progress*
 - OSS Failure
 - ✗ Pollution Hotspot Closed
 - Pollution Hotspot
- *Repairs not associated with a current OSS failure were linked to failures identified prior to Phase III

Pollution Hotspots Identified, On-site Sewage System Failures Found, and their Repair Status

