

APPENDIX A – HCRPIC Program Phase II: Maps

The basemap used on the following maps is by National Geographic. Content may not reflect national Geographic's current map policy. Source information for the basemap includes: National Geographic, Esri, DeLorme, HERE, UNEP-WCMC, USGS, NASA, ESA, METI, NRCAN, GEBCO, NOAA, increment P Corp.

Note: HCRPIC Phase II data is best viewed using the interactive web maps found on the HCRPIC website: <http://hccc.wa.gov/content/pollution-identification-correction>.

HCRPIC Program Phase II Map Index

Map Title	Page
Figure A-1: On-site Sewage Systems Located in the Hood Canal Watershed (January 2017)	1
Figure A-2: Washington Department of Health Beach and Shellfish Growing Areas Status in Hood Canal (December 2016)	2
Figure A-3: Shoreline Survey Areas Monitored (Feb. 2015-Dec. 2016)	3
Figure A-4: Map Atlas of Shoreline Survey Areas Monitored and Parcel Surveys Conducted (Feb. 2015-Dec. 2016)	4
Figure A-5: Map Index of Pollution Hotspots Identified, On-site Sewage System Failures Found, and their Repair Status (Feb. 2015-Dec. 2016) – Detailed maps in Figure A-6	13
Figure A-6: Map Atlas of Pollution Hotspots Identified, On-site Sewage System Failures Found, and their Repair Status (Feb. 2015-Dec. 2016)	14
Figure A-7: Age of On-site Sewage Systems Located in the Hood Canal watershed (January 2017)	31
Figure A-8: Clusters of On-site Sewage Systems Over 30 Years Old in the Hood Canal Watershed (January 2017)	32
Figure A-9: Clusters of On-site Sewage Systems Over 20 Years Old in the Hood Canal Watershed (January 2017)	33
Figure A-10: Types of On-site Sewage Systems (OSS) Located in the Hood Canal Watershed (January 2017)	34
Figure A-11: Map Atlas of Types of On-site Sewage Systems (OSS) Located in the Hood Canal Watershed (January 2017)	35
Figure A-12: Seepage Pits and Pit Privies Located in the Hood Canal Watershed (January 2017)	42
Figure A-13: Unknown On-site Sewage System Records in the Hood Canal Watershed (January 2017)	43

All HCRPIC maps created by Gretchen Peterson at PetersonGIS.

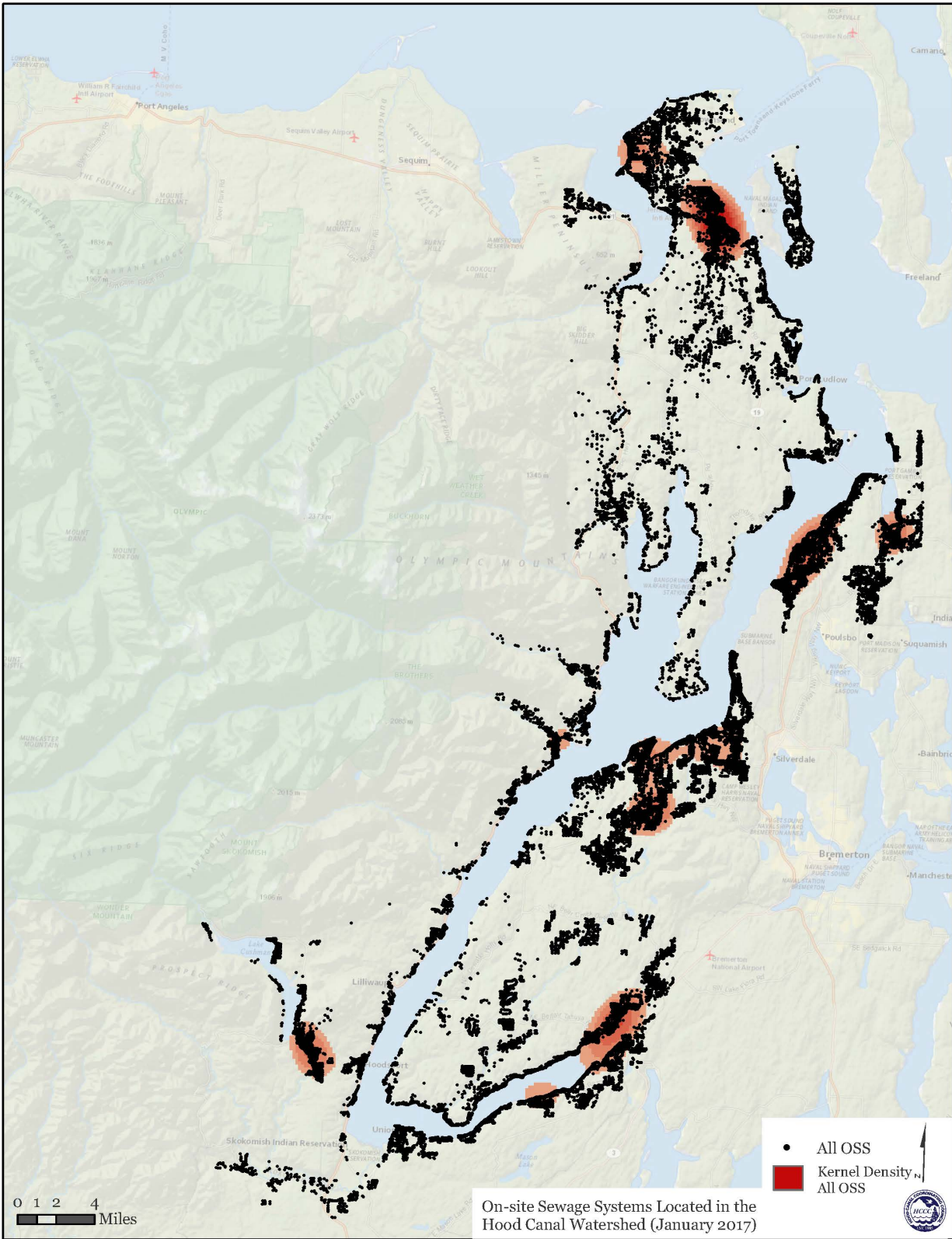


Figure A-1: On-site Sewage Systems Located in the Hood Canal Watershed (January 2017)

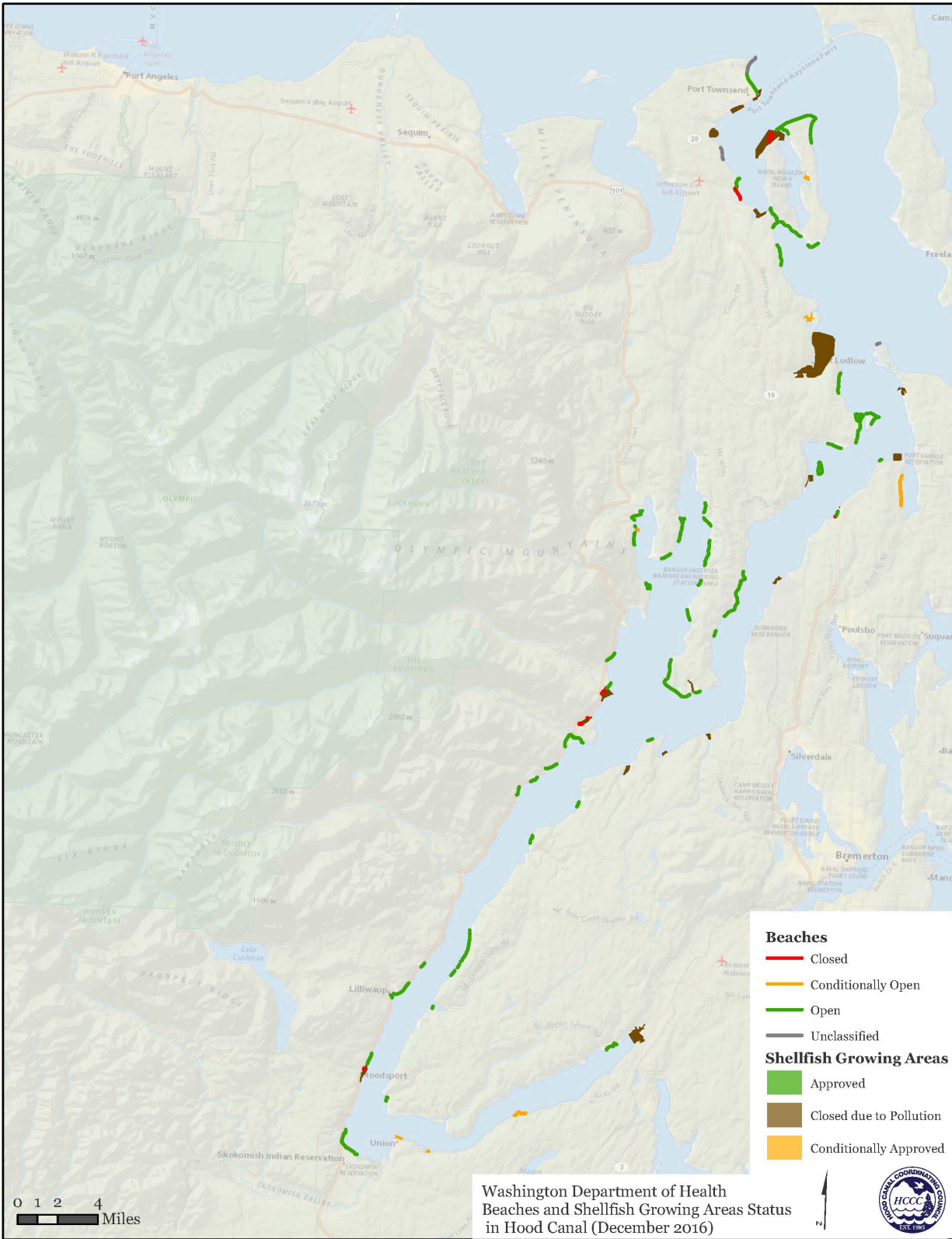


Figure A-2: Washington Department of Health Beach and Shellfish Growing Areas Status in Hood Canal (December 2016)

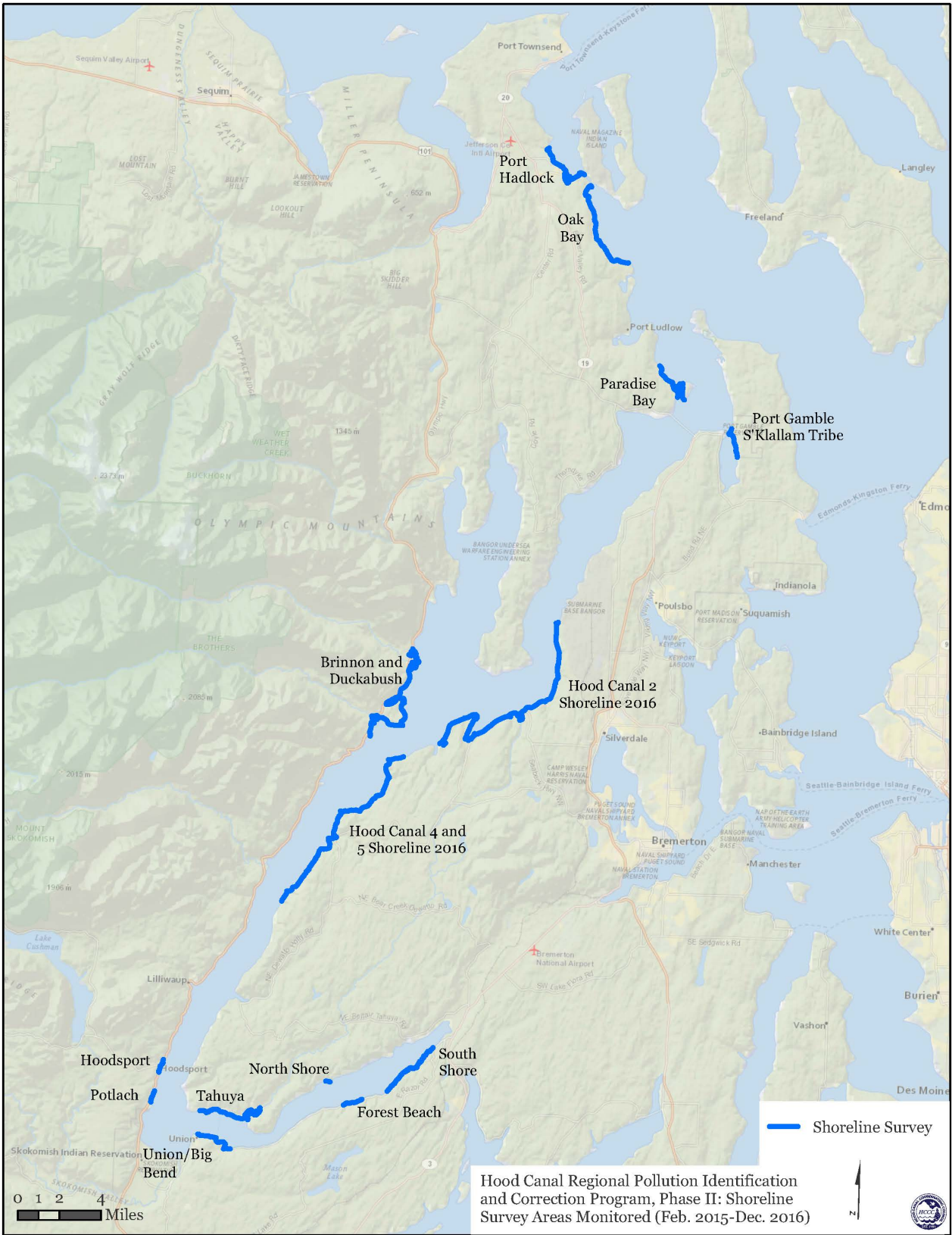


Figure A-3: Shoreline Survey Areas Monitored (Feb. 2015-Dec. 2016)



Figure A-4: Map Atlas of Shoreline Survey Areas Monitored and Parcel Surveys Conducted (Feb. 2015-Dec. 2016), page 1 of 9

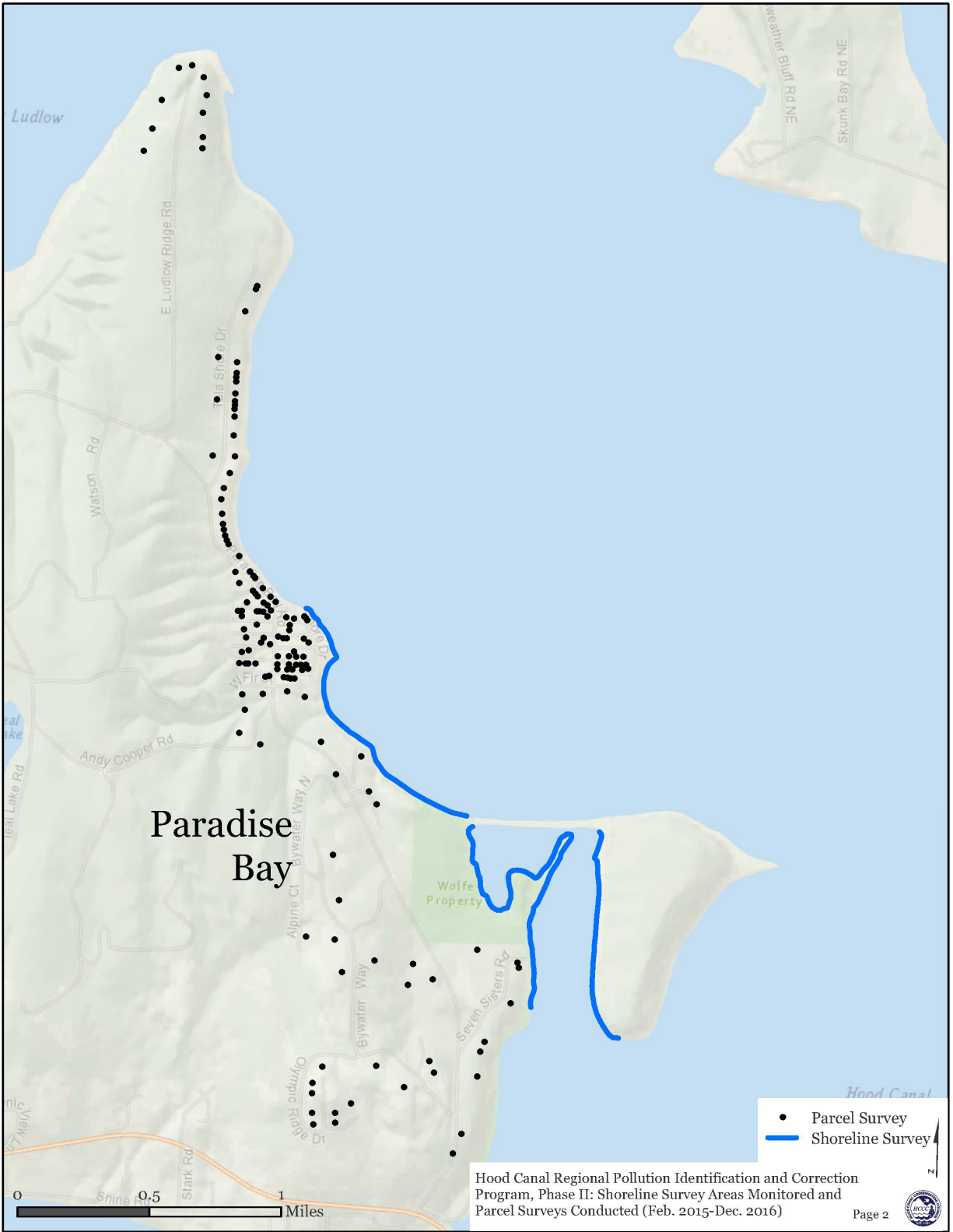


Figure A-4: Map Atlas of Shoreline Survey Areas Monitored and Parcel Surveys Conducted (Feb. 2015-Dec. 2016), page 2 of 9

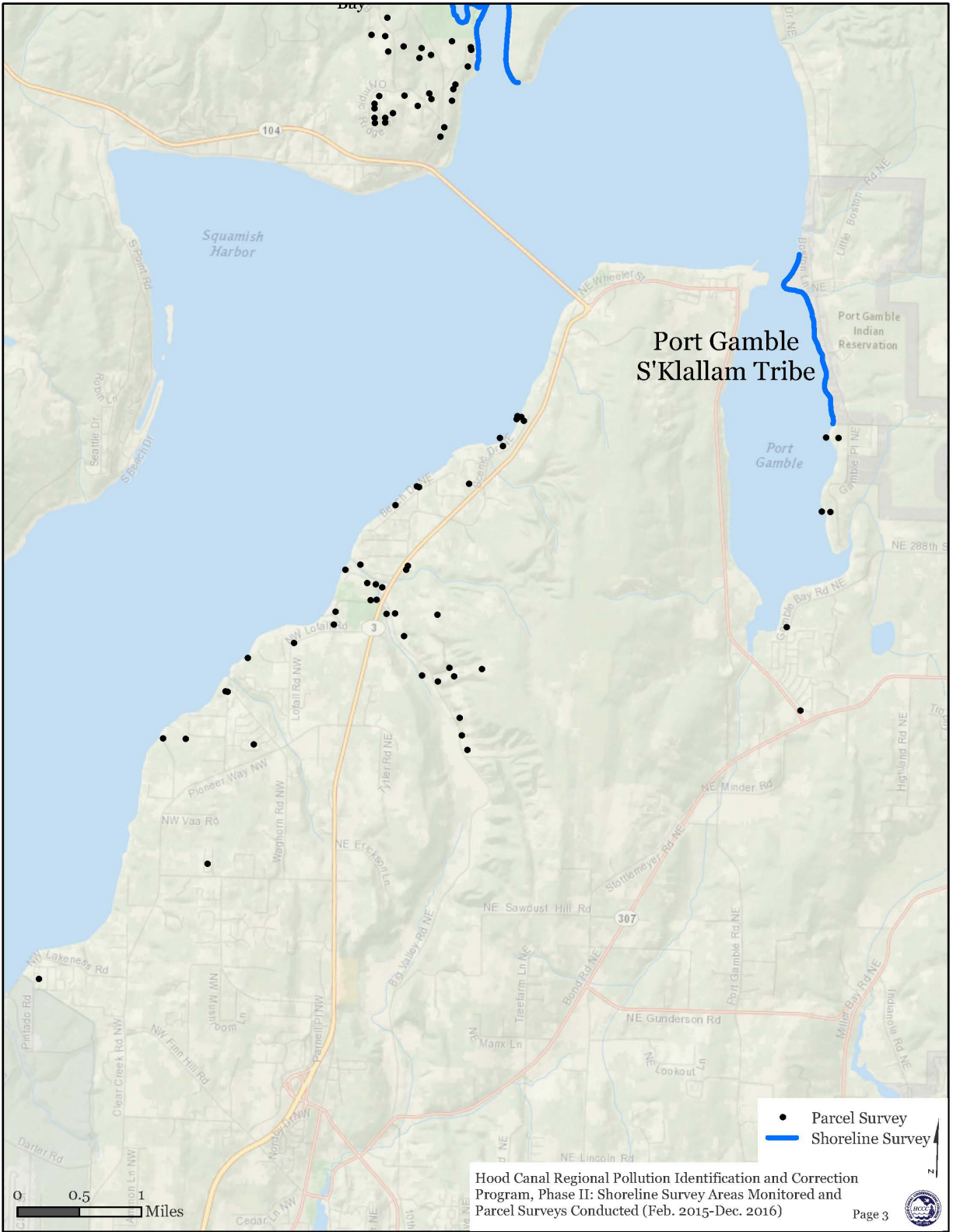


Figure A-4: Map Atlas of Shoreline Survey Areas Monitored and Parcel Surveys Conducted (Feb. 2015-Dec. 2016), page 3 of 9

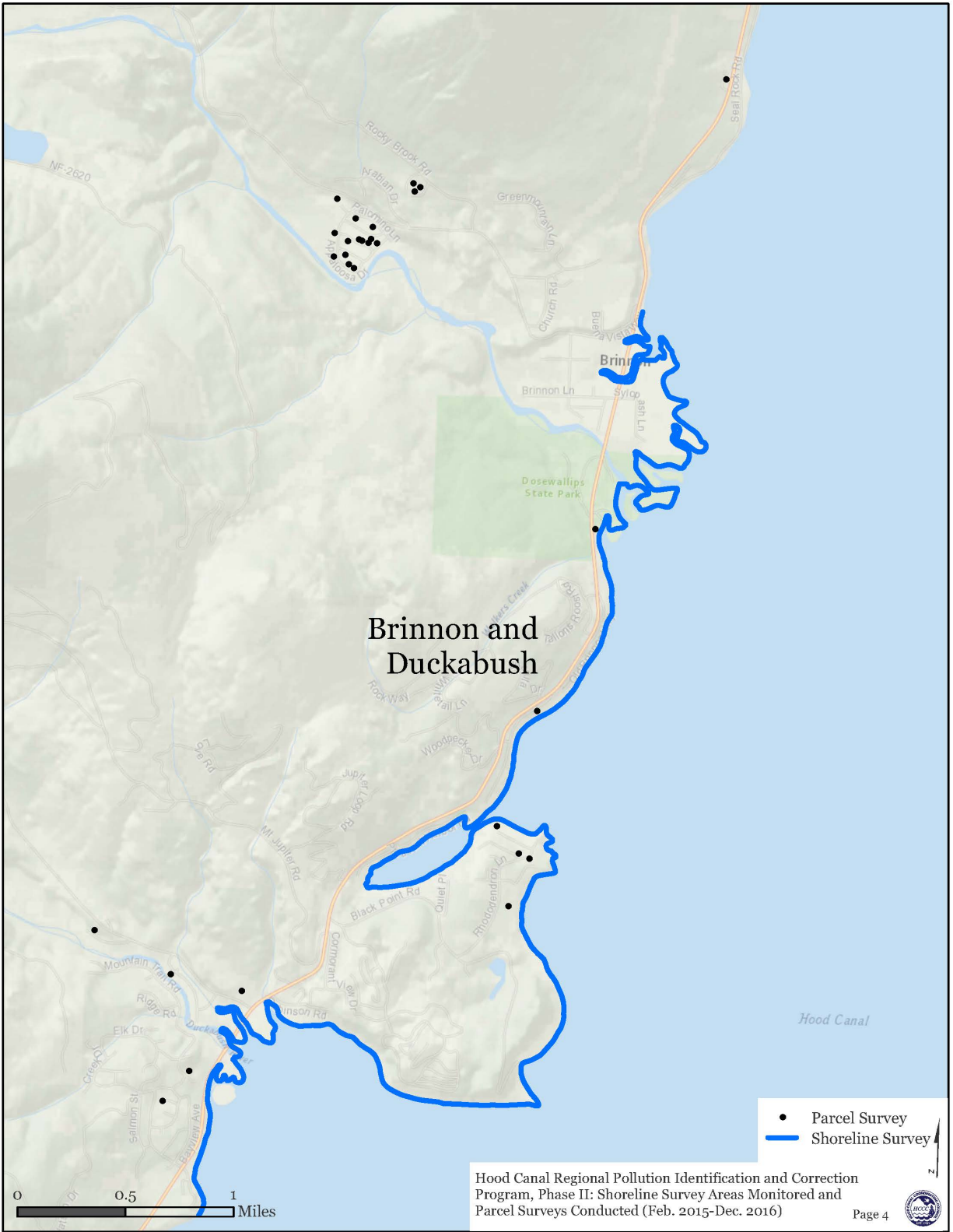


Figure A-4: Map Atlas of Shoreline Survey Areas Monitored and Parcel Surveys Conducted (Feb. 2015-Dec. 2016), page 4 of 9

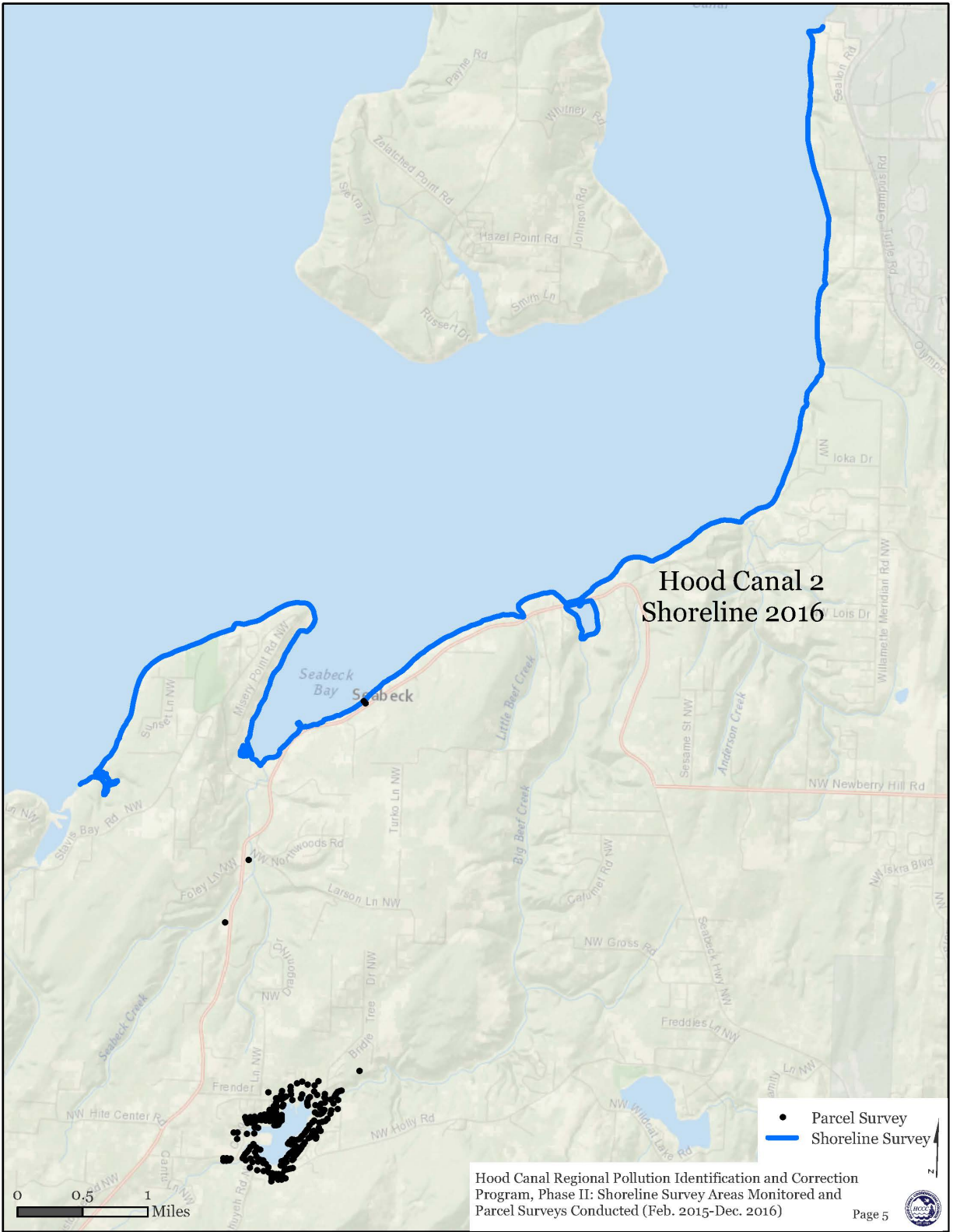


Figure A-4: Map Atlas of Shoreline Survey Areas Monitored and Parcel Surveys Conducted (Feb. 2015-Dec. 2016), page 5 of 9

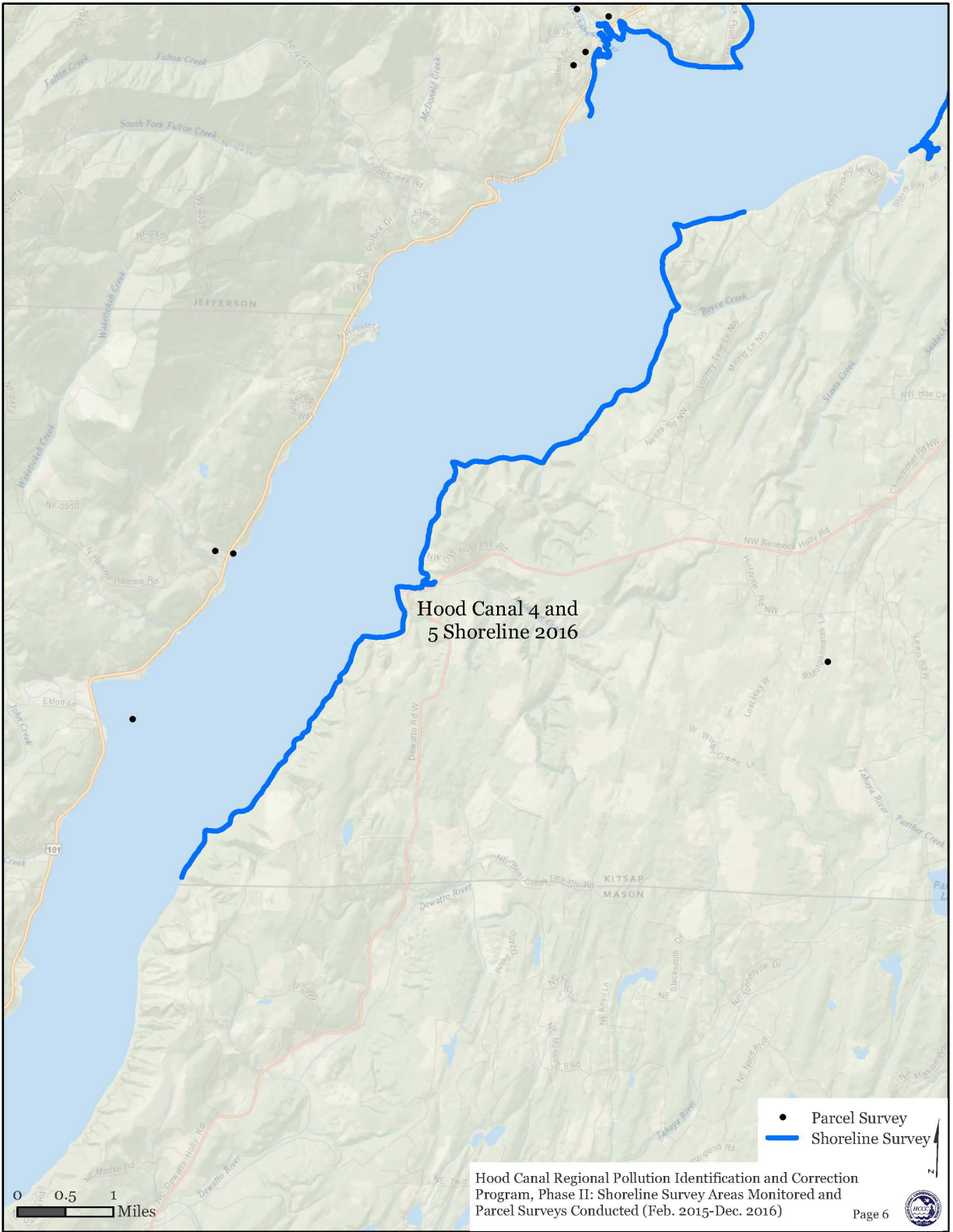


Figure A-4: Map Atlas of Shoreline Survey Areas Monitored and Parcel Surveys Conducted (Feb. 2015-Dec. 2016), page 6 of 9

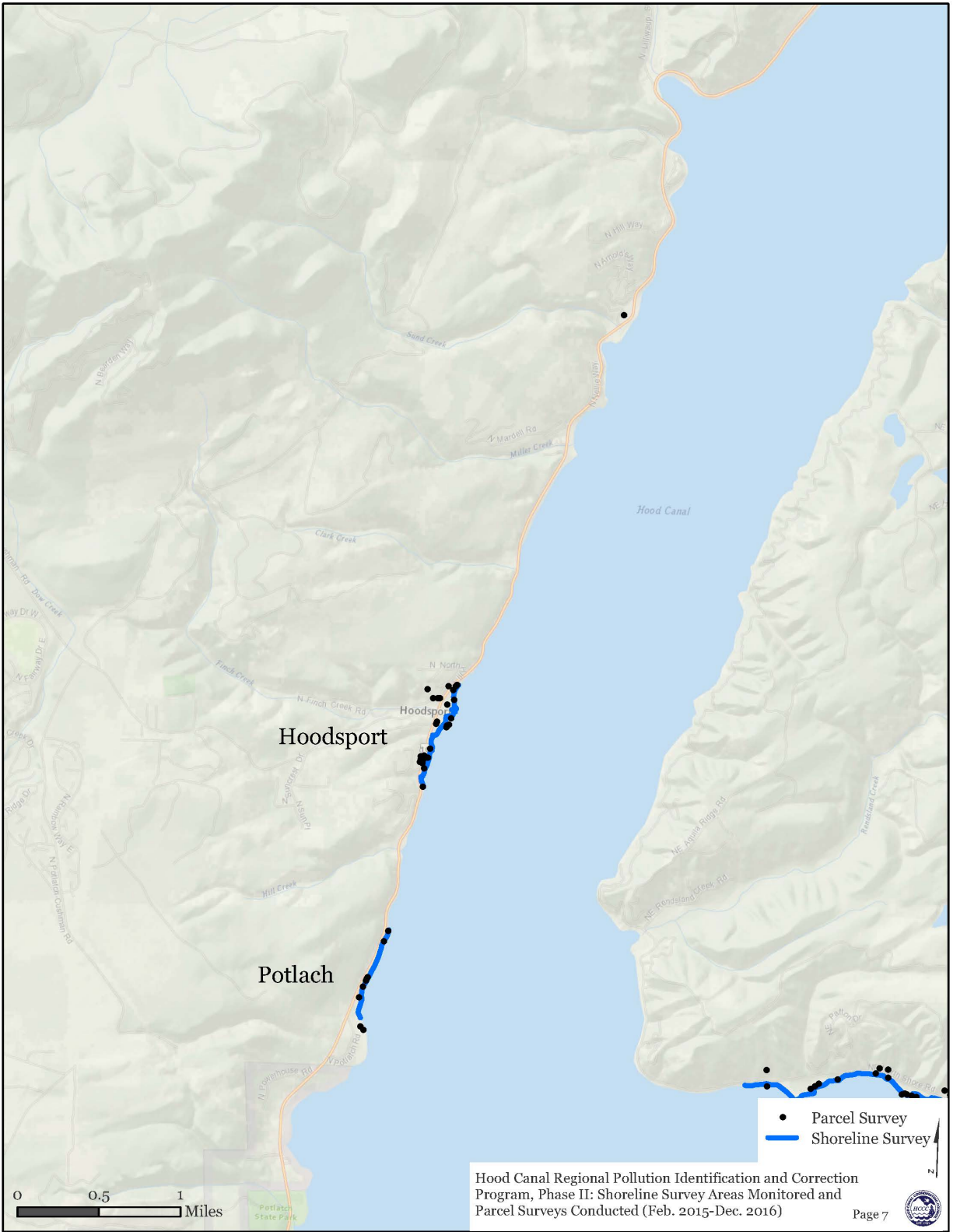


Figure A-4: Map Atlas of Shoreline Survey Areas Monitored and Parcel Surveys Conducted (Feb. 2015-Dec. 2016), page 7 of 9

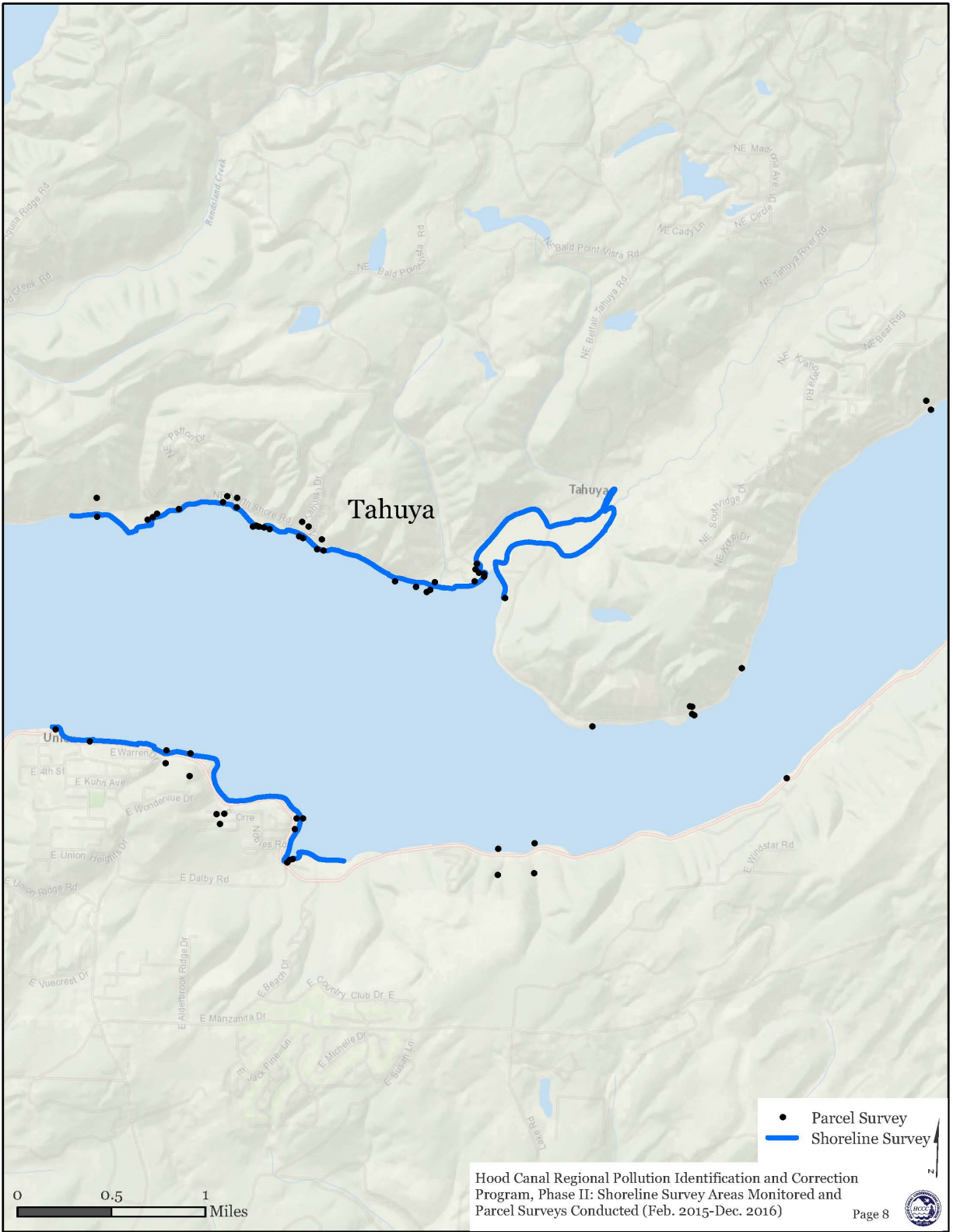


Figure A-4: Map Atlas of Shoreline Survey Areas Monitored and Parcel Surveys Conducted (Feb. 2015-Dec. 2016), page 8 of 9

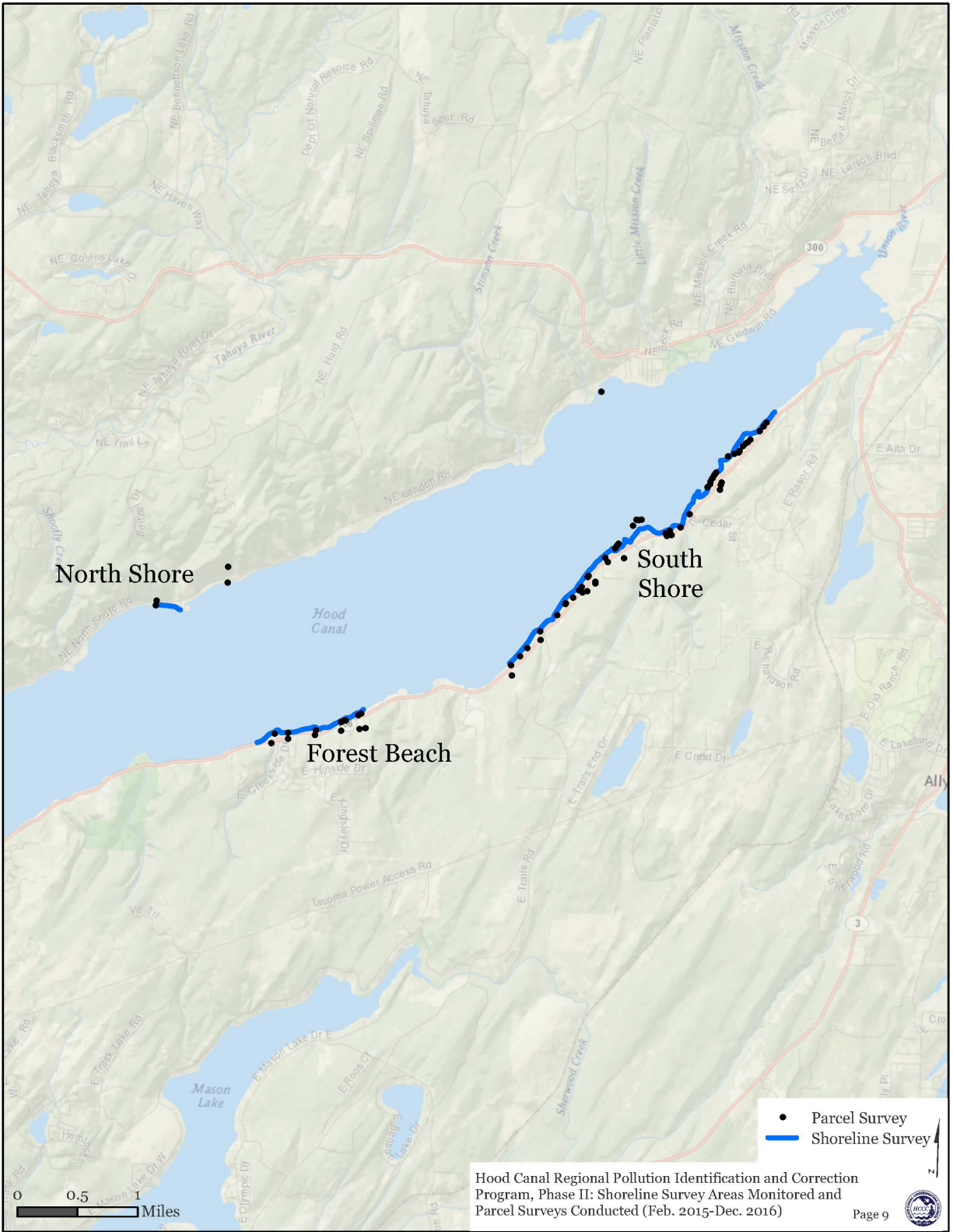


Figure A-4: Map Atlas of Shoreline Survey Areas Monitored and Parcel Surveys Conducted (Feb. 2015-Dec. 2016), page 9 of 9

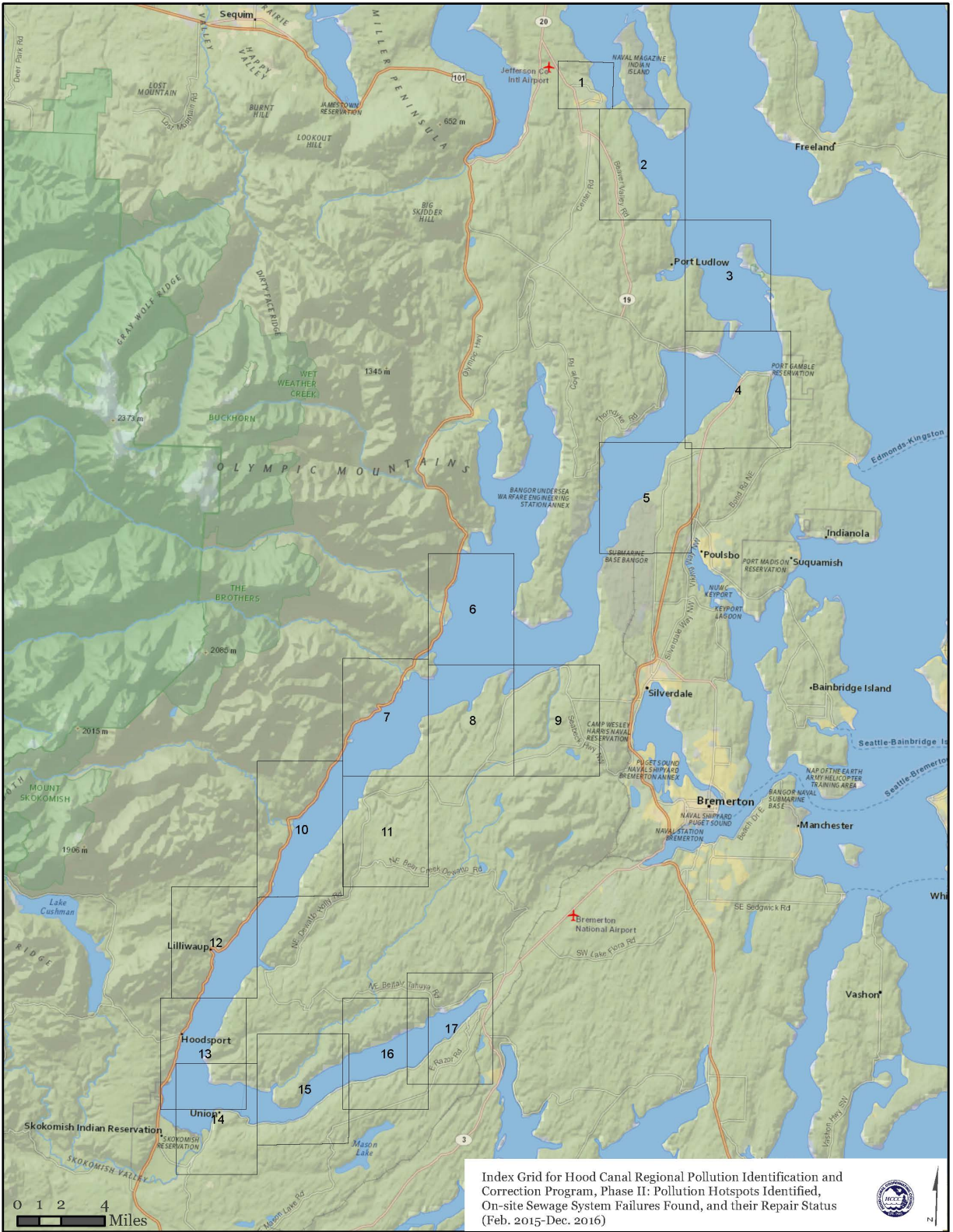


Figure A-5: Map Index of Pollution Hotspots Identified, On-site Sewage System Failures Found, and their Repair Status (Feb. 2015-Dec. 2016) – Detailed maps in Figure A-6

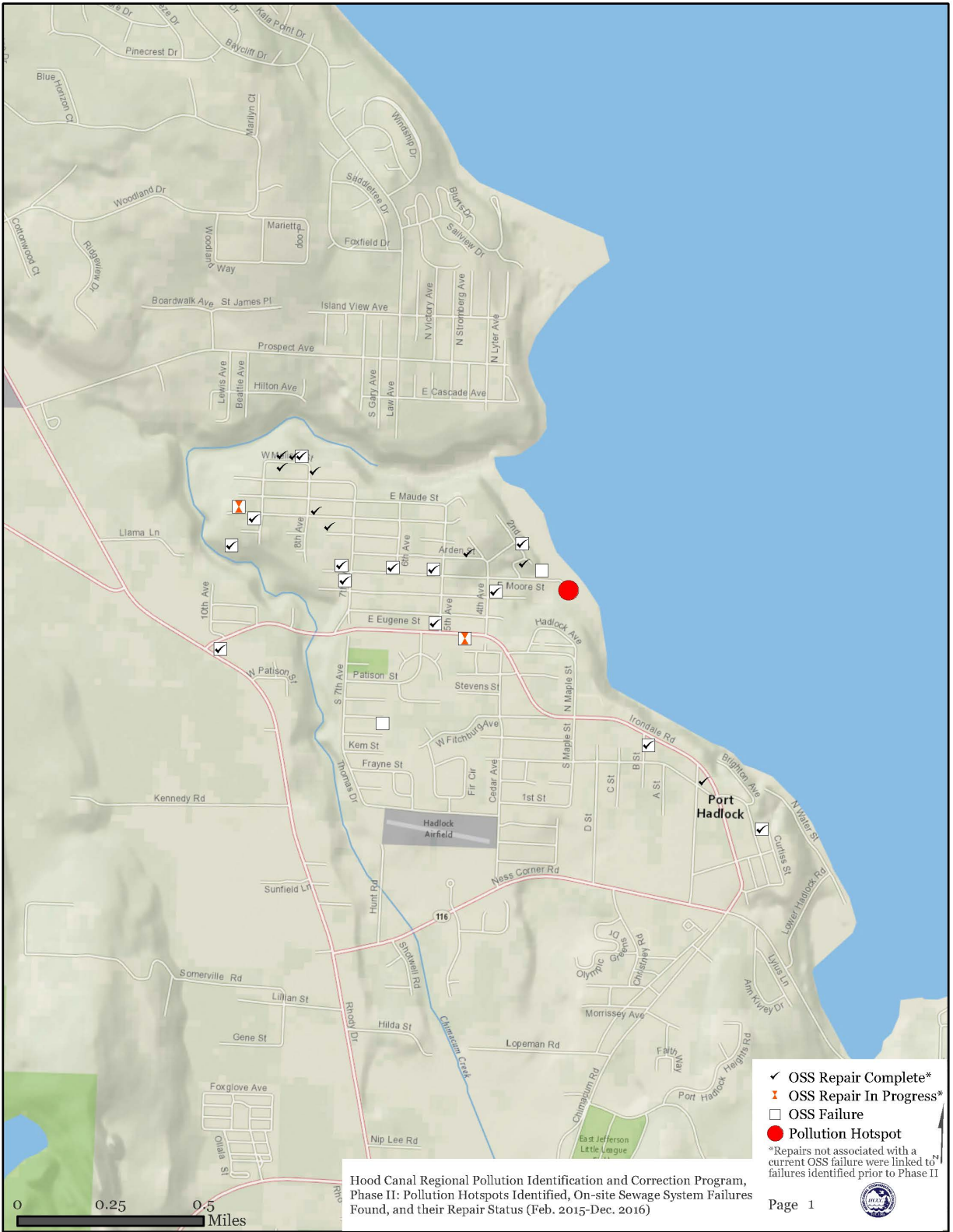


Figure A-6: Map Atlas of Pollution Hotspots Identified, On-site Sewage System Failures Found, and their Repair Status (Feb. 2015-Dec. 2016), page 1 of 17

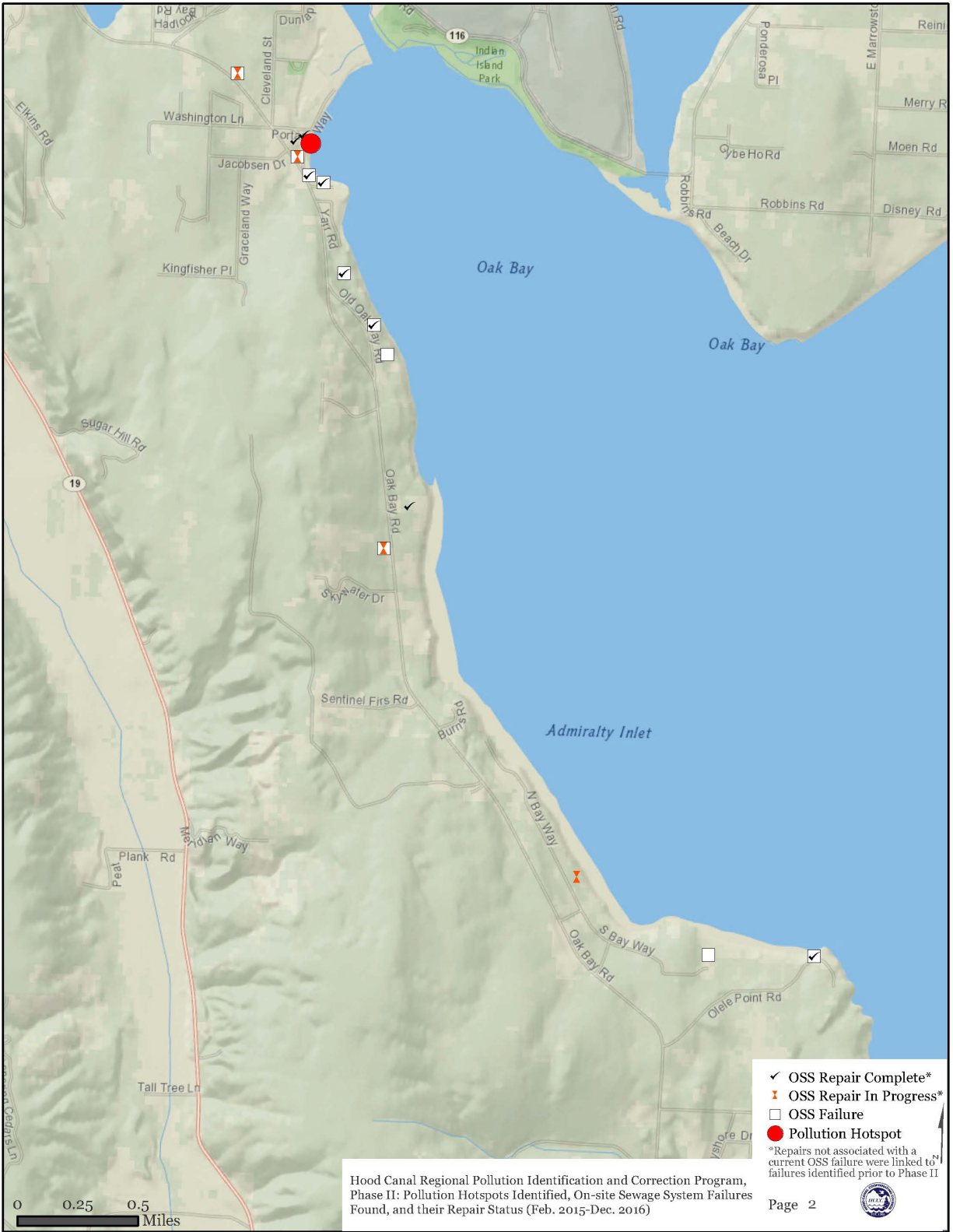


Figure A-6: Map Atlas of Pollution Hotspots Identified, On-site Sewage System Failures Found, and their Repair Status (Feb. 2015-Dec. 2016), page 2 of 17

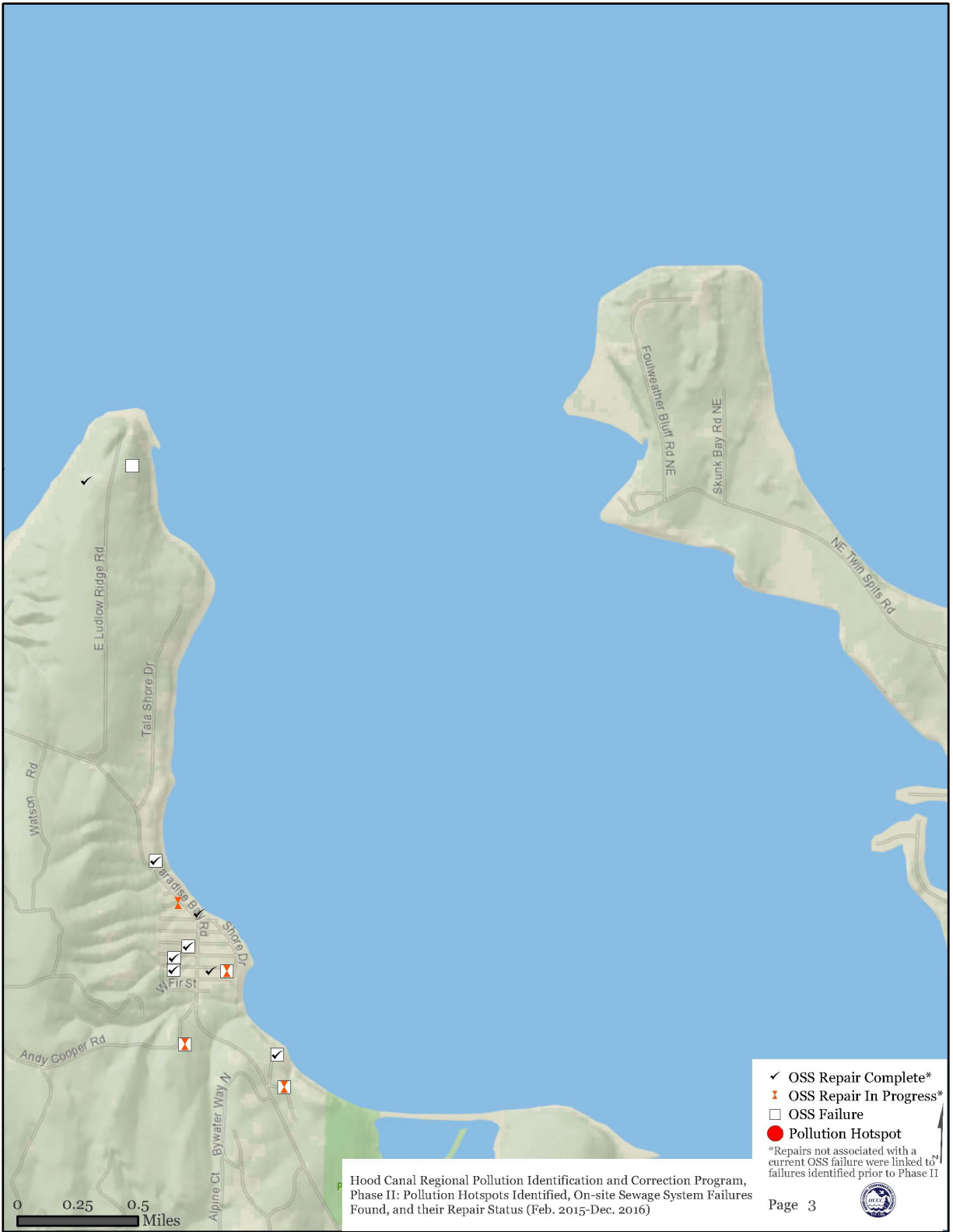


Figure A-6: Map Atlas of Pollution Hotspots Identified, On-site Sewage System Failures Found, and their Repair Status (Feb. 2015-Dec. 2016), page 3 of 17

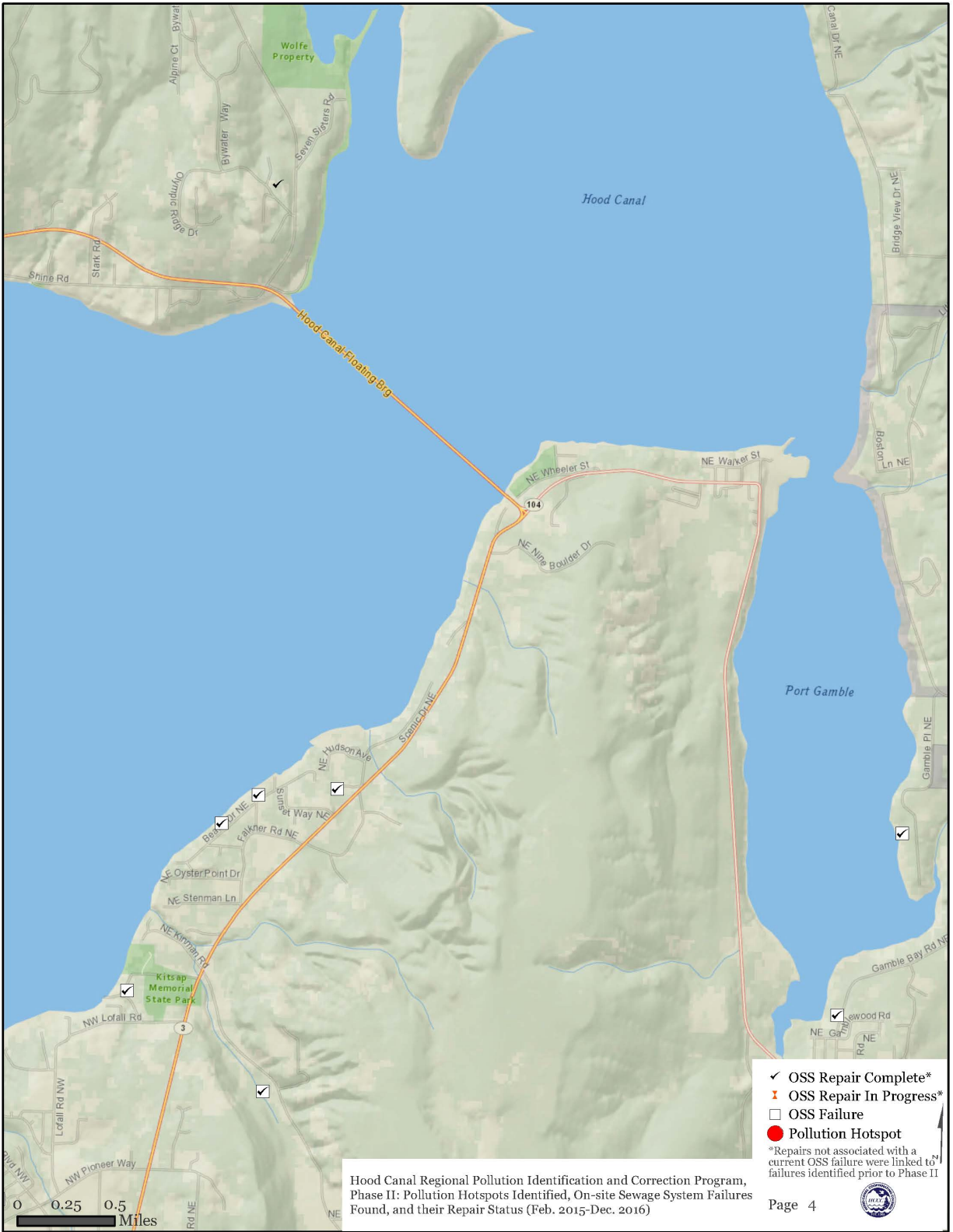


Figure A-6: Map Atlas of Pollution Hotspots Identified, On-site Sewage System Failures Found, and their Repair Status (Feb. 2015-Dec. 2016), page 4 of 17

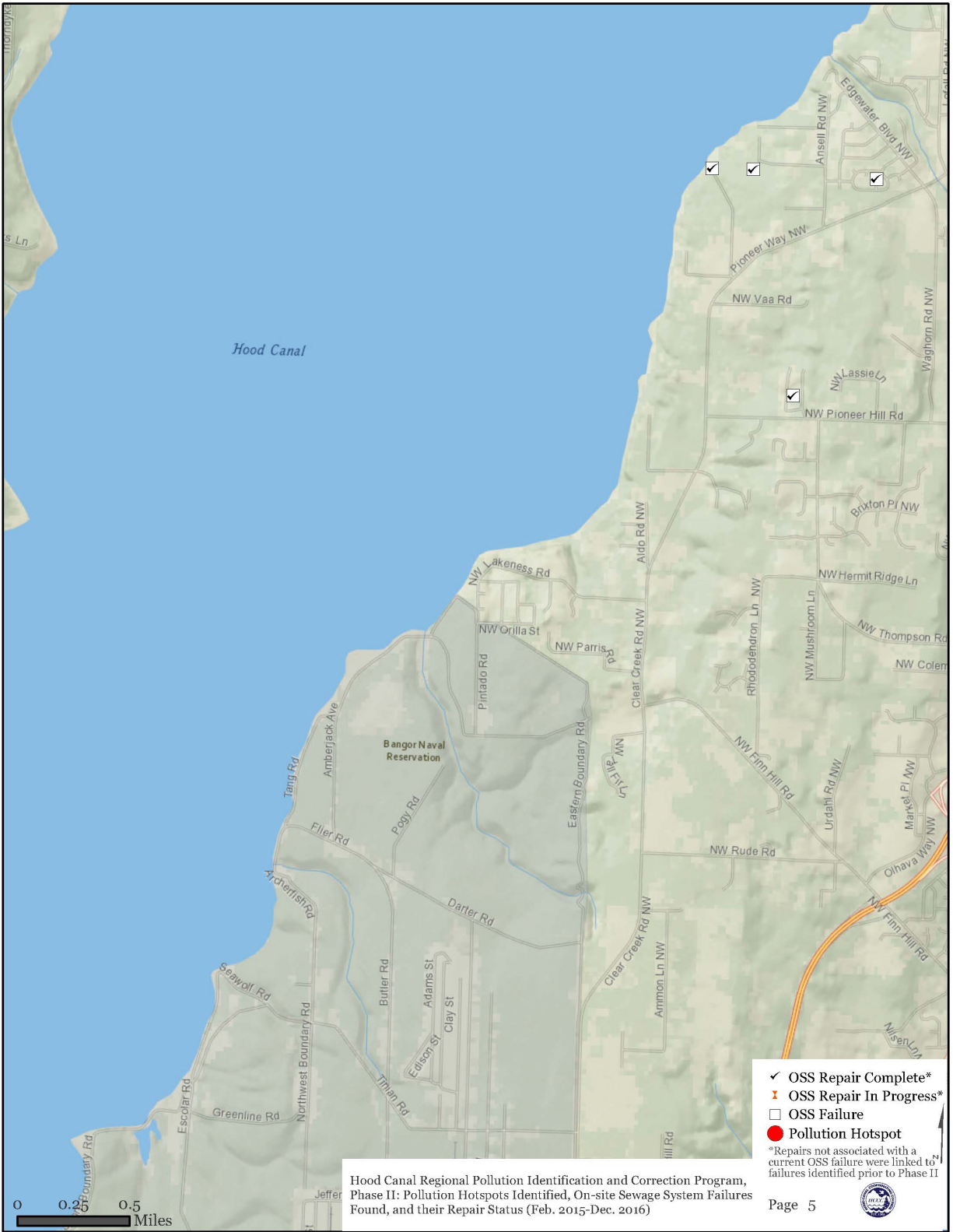


Figure A-6: Map Atlas of Pollution Hotspots Identified, On-site Sewage System Failures Found, and their Repair Status (Feb. 2015-Dec. 2016), page 5 of 17



Figure A-6: Map Atlas of Pollution Hotspots Identified, On-site Sewage System Failures Found, and their Repair Status (Feb. 2015-Dec. 2016), page 6 of 17



Figure A-6: Map Atlas of Pollution Hotspots Identified, On-site Sewage System Failures Found, and their Repair Status (Feb. 2015-Dec. 2016), page 7 of 17

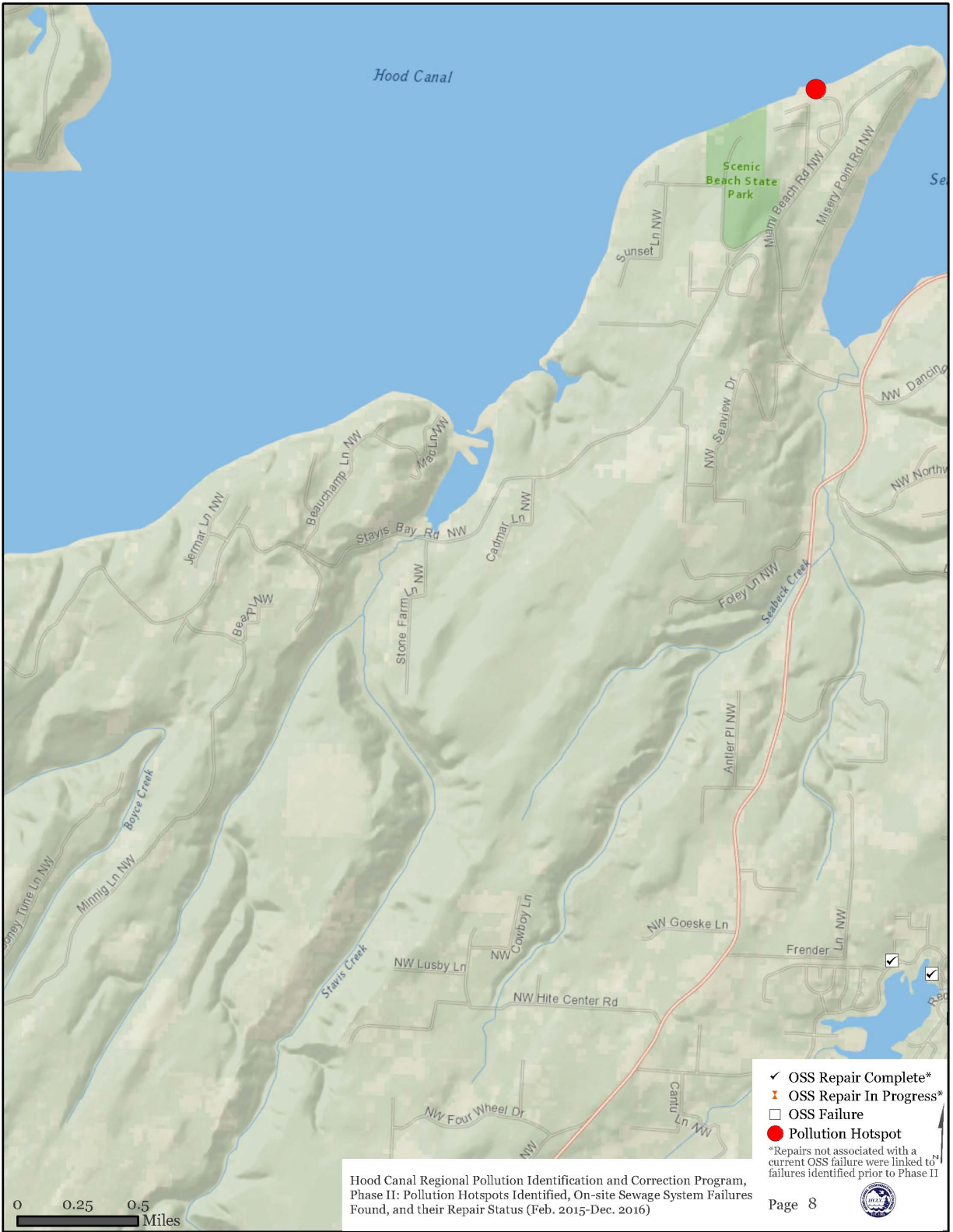


Figure A-6: Map Atlas of Pollution Hotspots Identified, On-site Sewage System Failures Found, and their Repair Status (Feb. 2015-Dec. 2016), page 8 of 17



Figure A-6: Map Atlas of Pollution Hotspots Identified, On-site Sewage System Failures Found, and their Repair Status (Feb. 2015-Dec. 2016), page 9 of 17



Figure A-6: Map Atlas of Pollution Hotspots Identified, On-site Sewage System Failures Found, and their Repair Status (Feb. 2015-Dec. 2016), page 11 of 17



Figure A-6: Map Atlas of Pollution Hotspots Identified, On-site Sewage System Failures Found, and their Repair Status (Feb. 2015-Dec. 2016), page 12 of 17

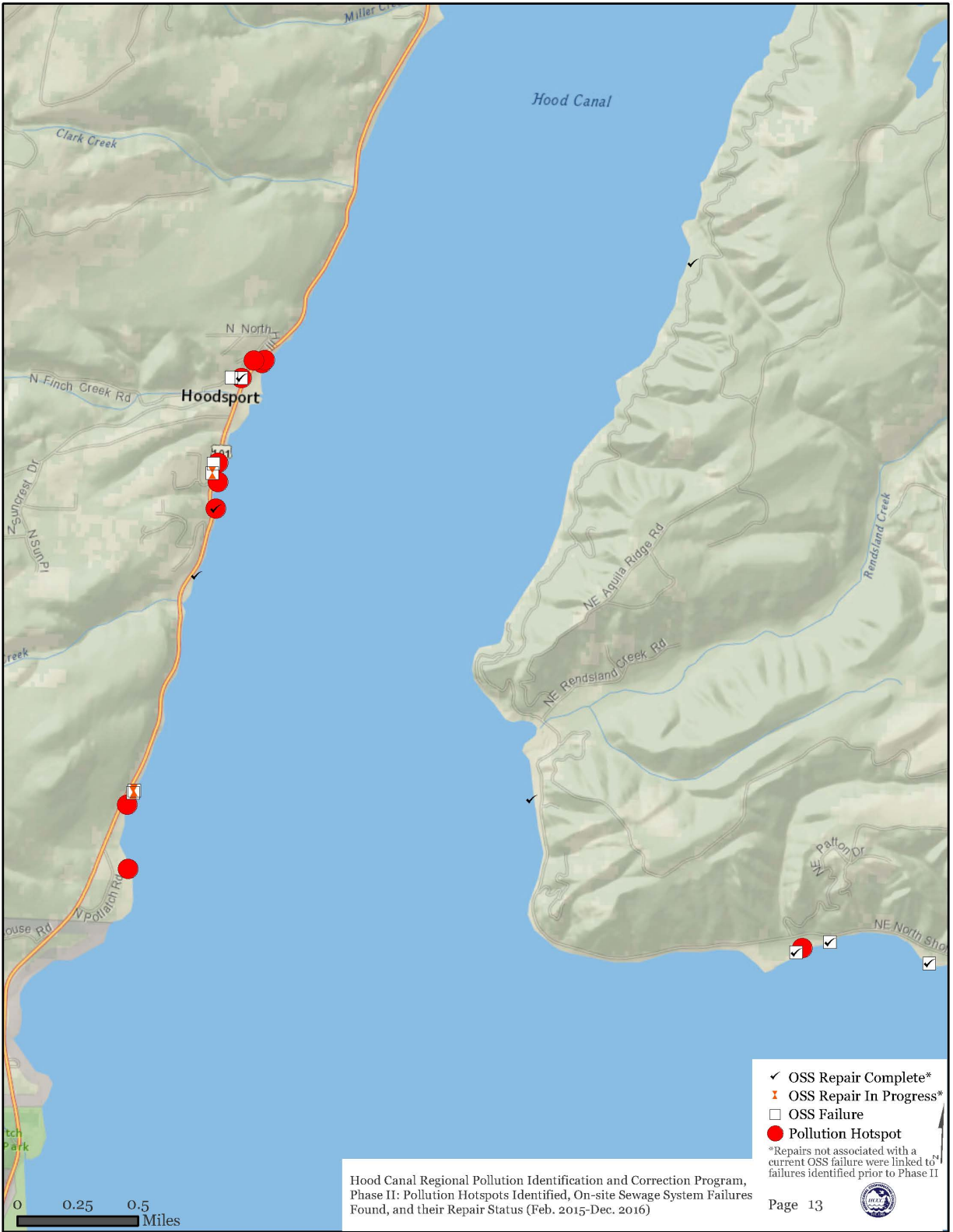


Figure A-6: Map Atlas of Pollution Hotspots Identified, On-site Sewage System Failures Found, and their Repair Status (Feb. 2015-Dec. 2016), page 13 of 17

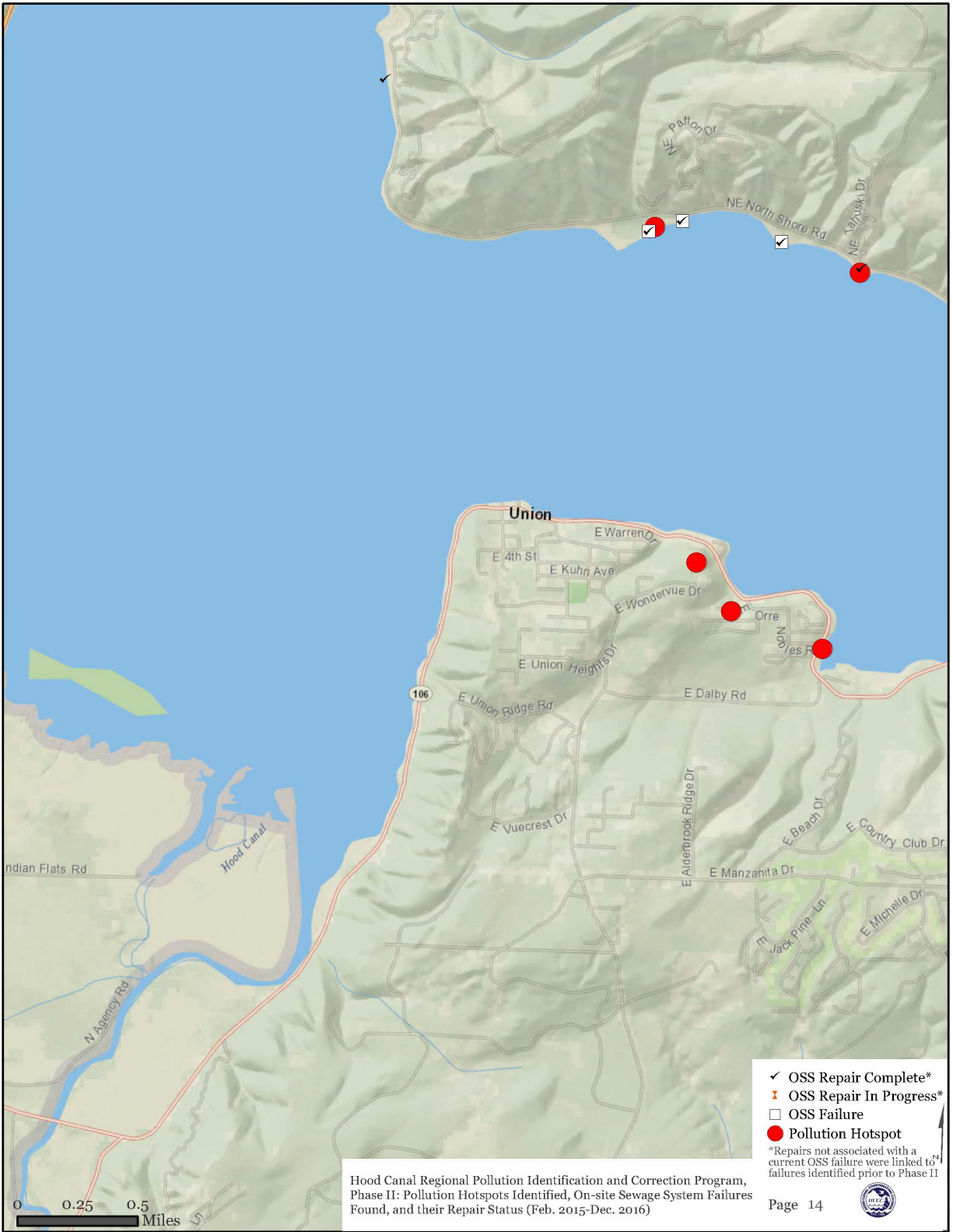


Figure A-6: Map Atlas of Pollution Hotspots Identified, On-site Sewage System Failures Found, and their Repair Status (Feb. 2015-Dec. 2016), page 14 of 17

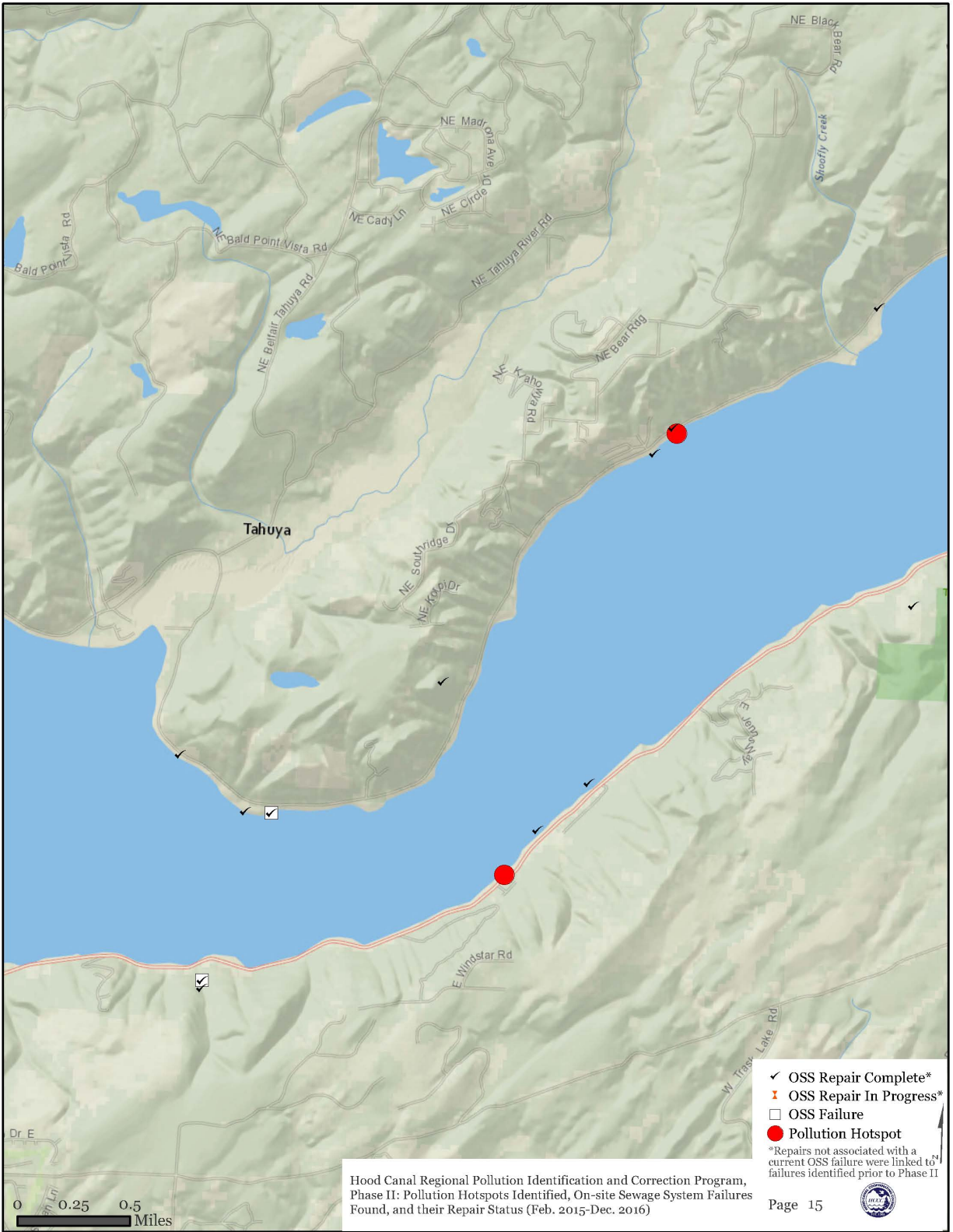


Figure A-6: Map Atlas of Pollution Hotspots Identified, On-site Sewage System Failures Found, and their Repair Status (Feb. 2015-Dec. 2016), page 15 of 17

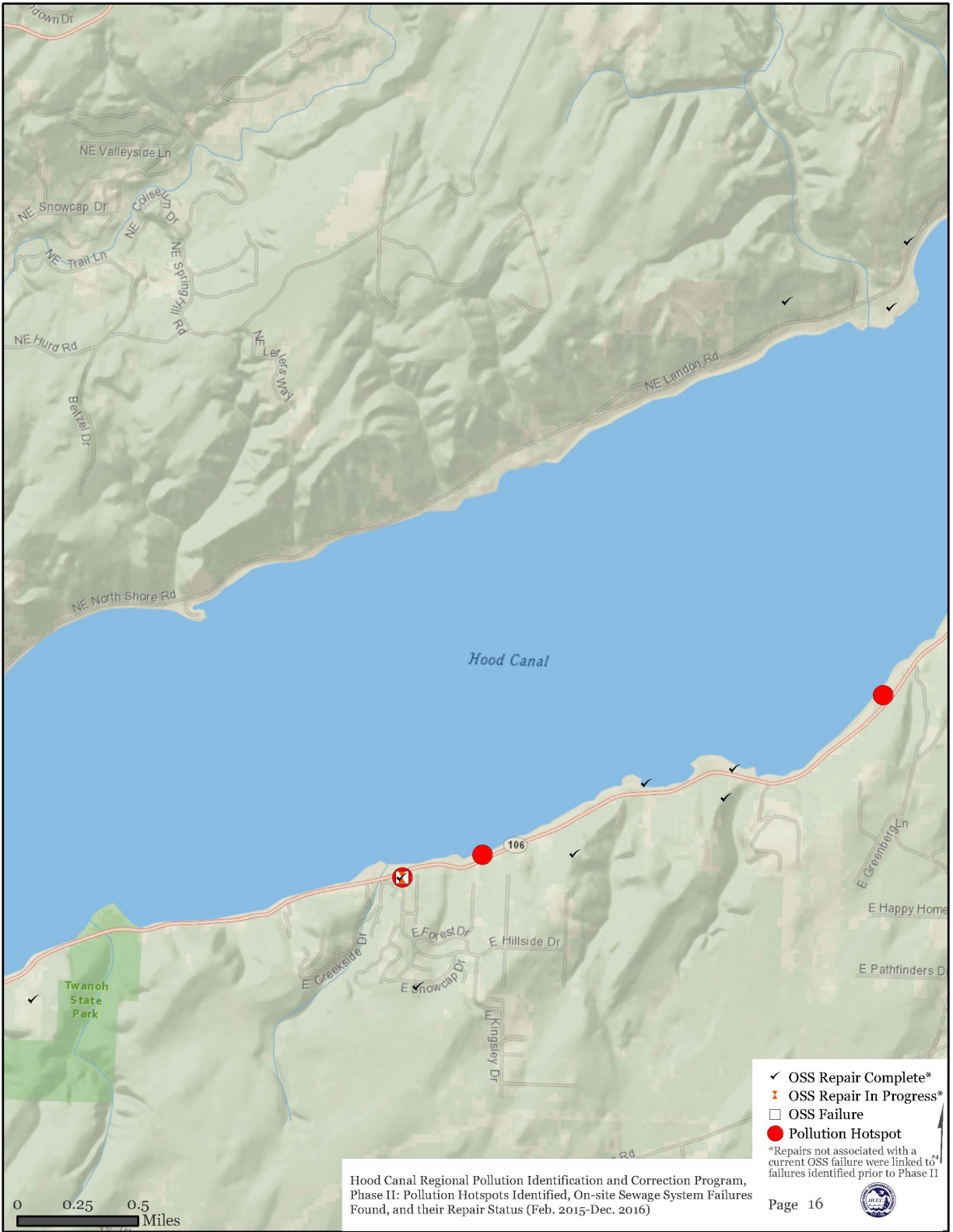


Figure A-6: Map Atlas of Pollution Hotspots Identified, On-site Sewage System Failures Found, and their Repair Status (Feb. 2015-Dec. 2016), page 16 of 17

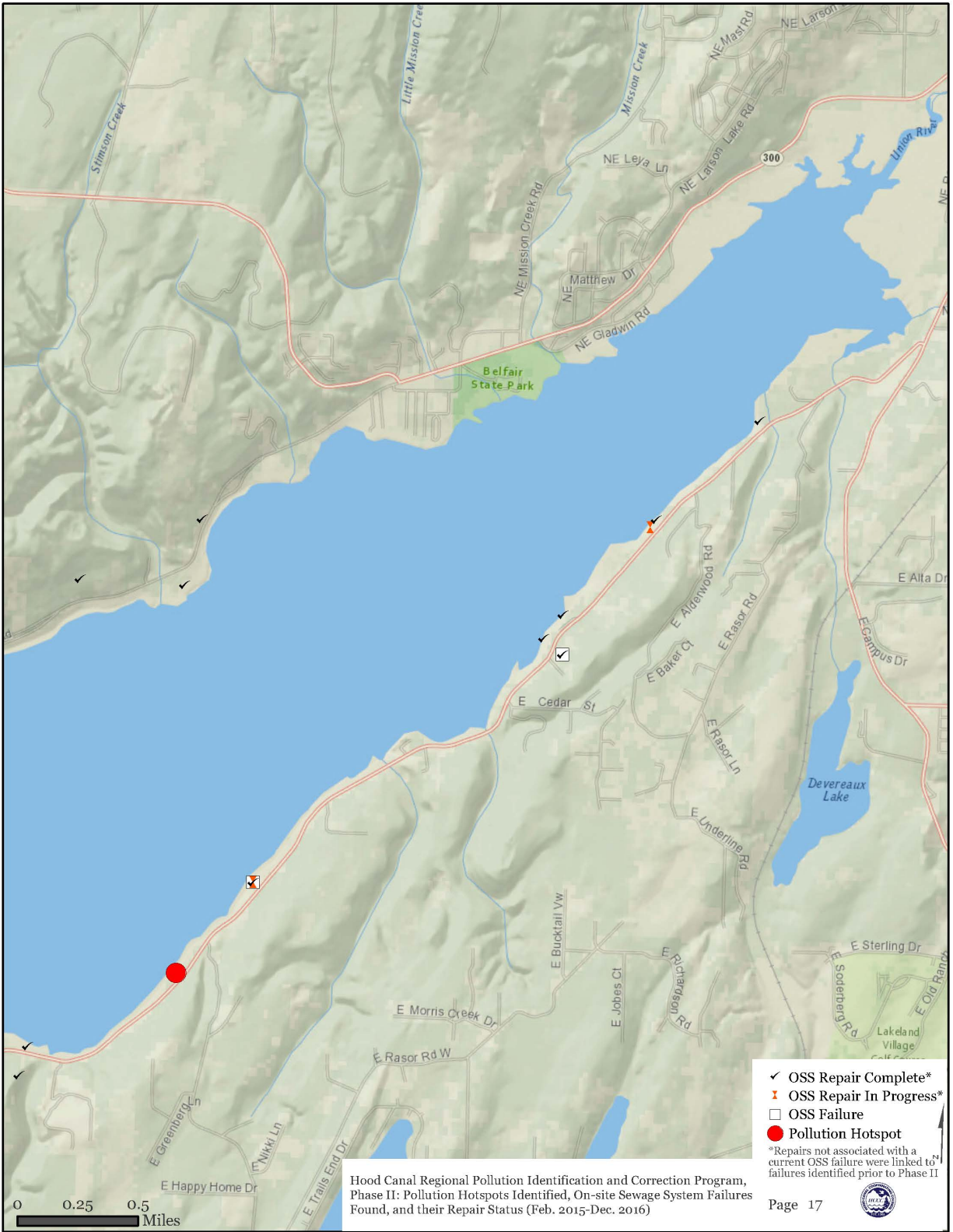


Figure A-6: Map Atlas of Pollution Hotspots Identified, On-site Sewage System Failures Found, and their Repair Status (Feb. 2015-Dec. 2016), page 17 of 17

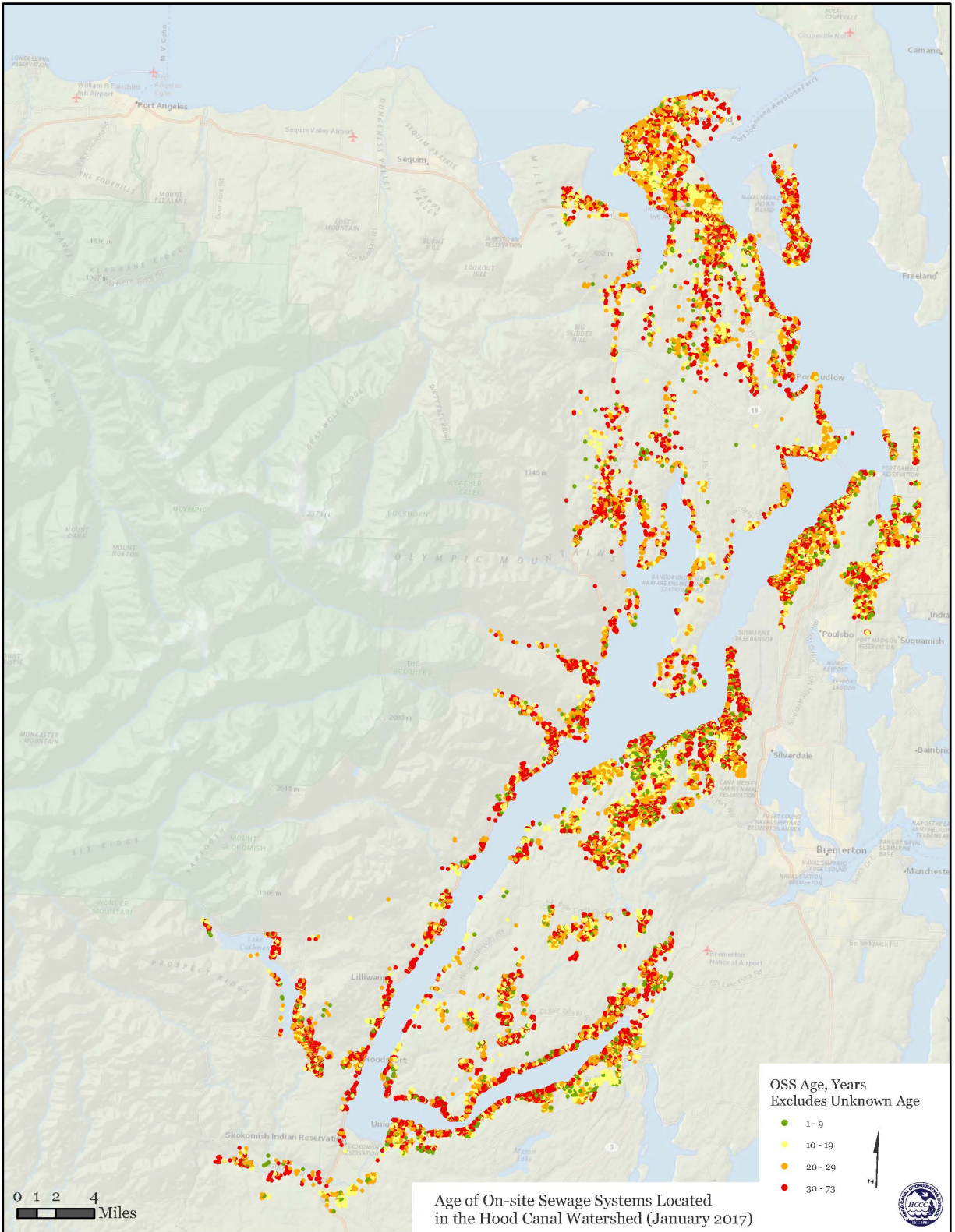


Figure A-7: Age of On-site Sewage Systems Located in the Hood Canal watershed (January 2017)

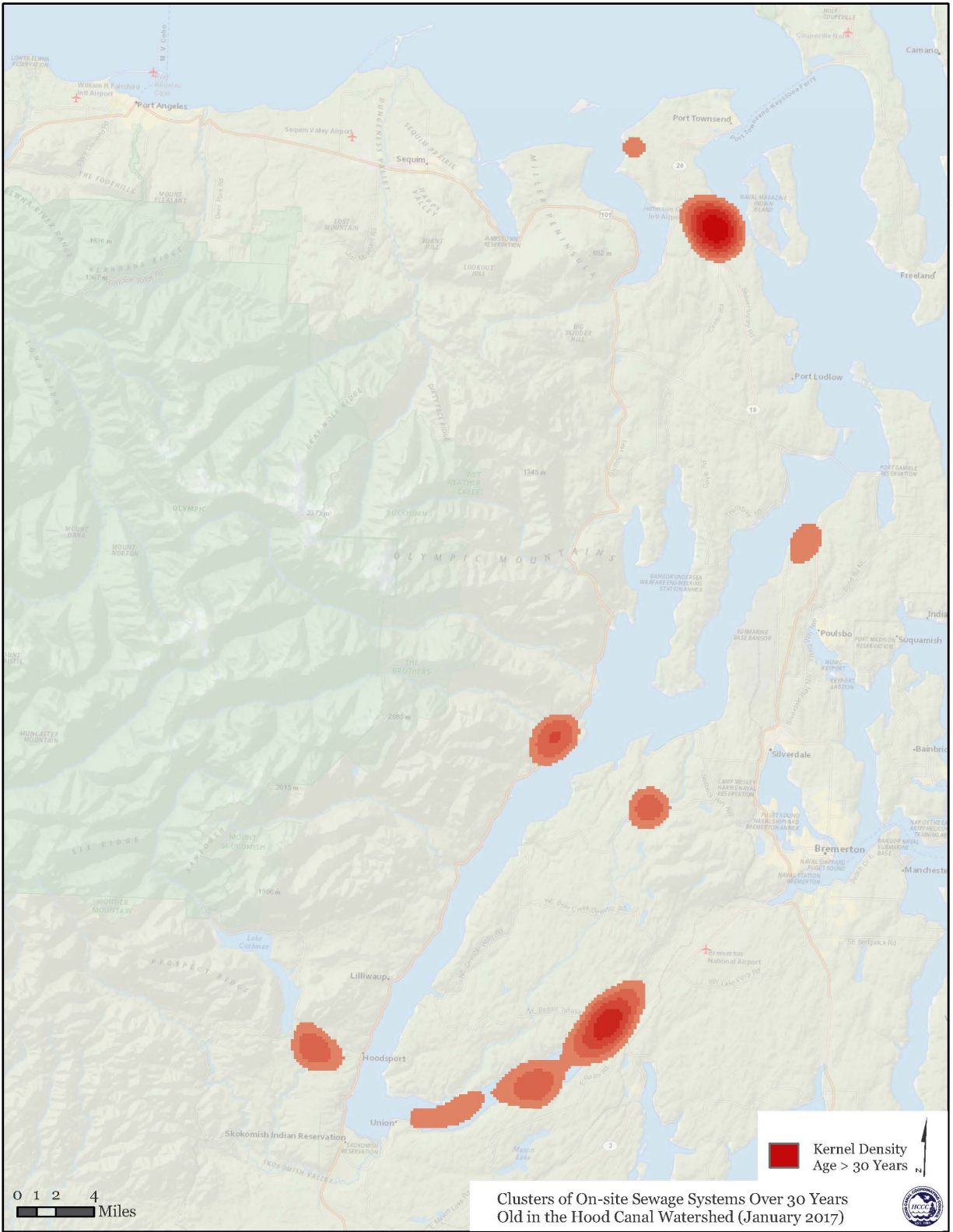


Figure A-8: Clusters of On-site Sewage Systems Over 30 Years Old in the Hood Canal Watershed (January 2017)

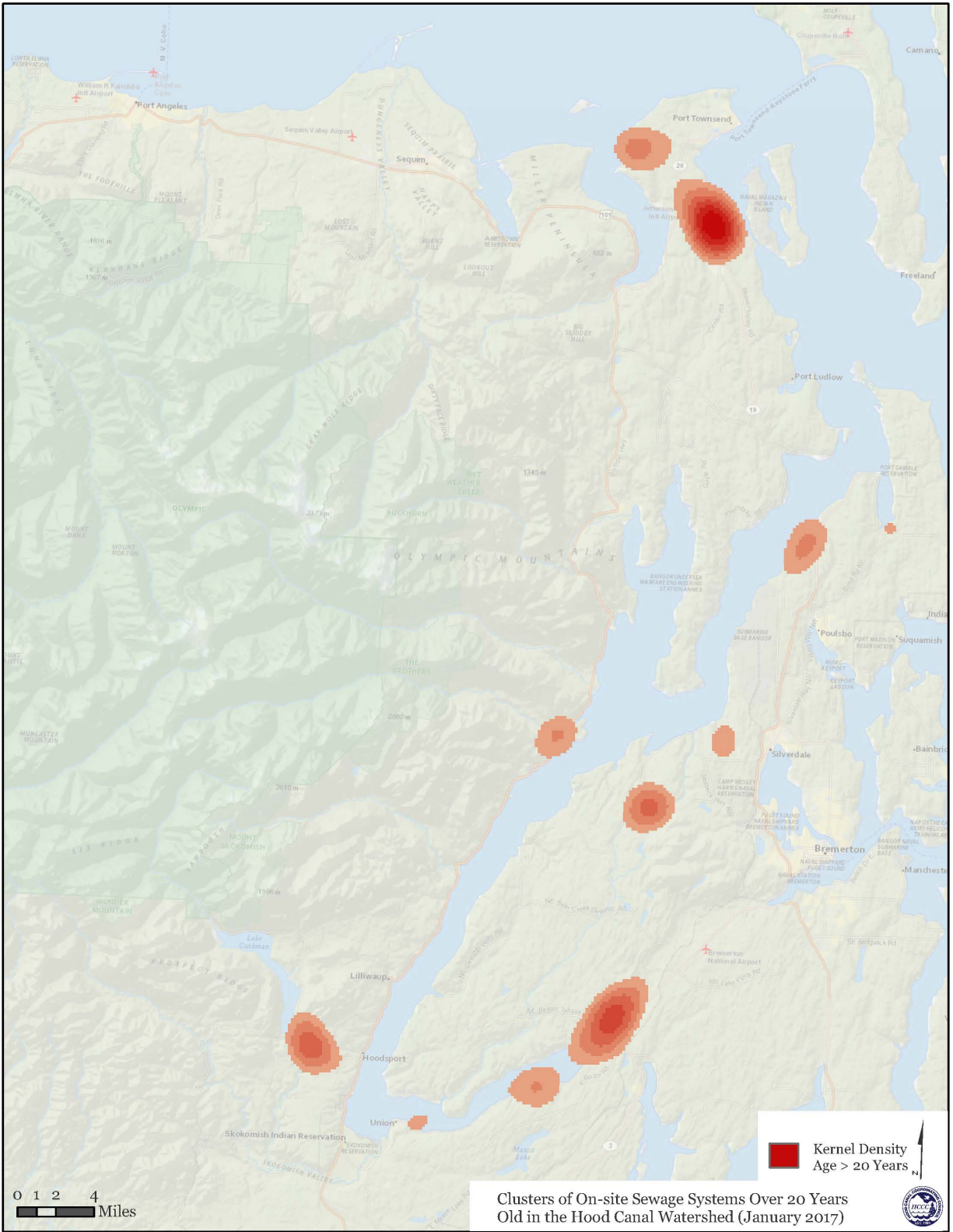


Figure A-9: Clusters of On-site Sewage Systems Over 20 Years Old in the Hood Canal Watershed (January 2017)

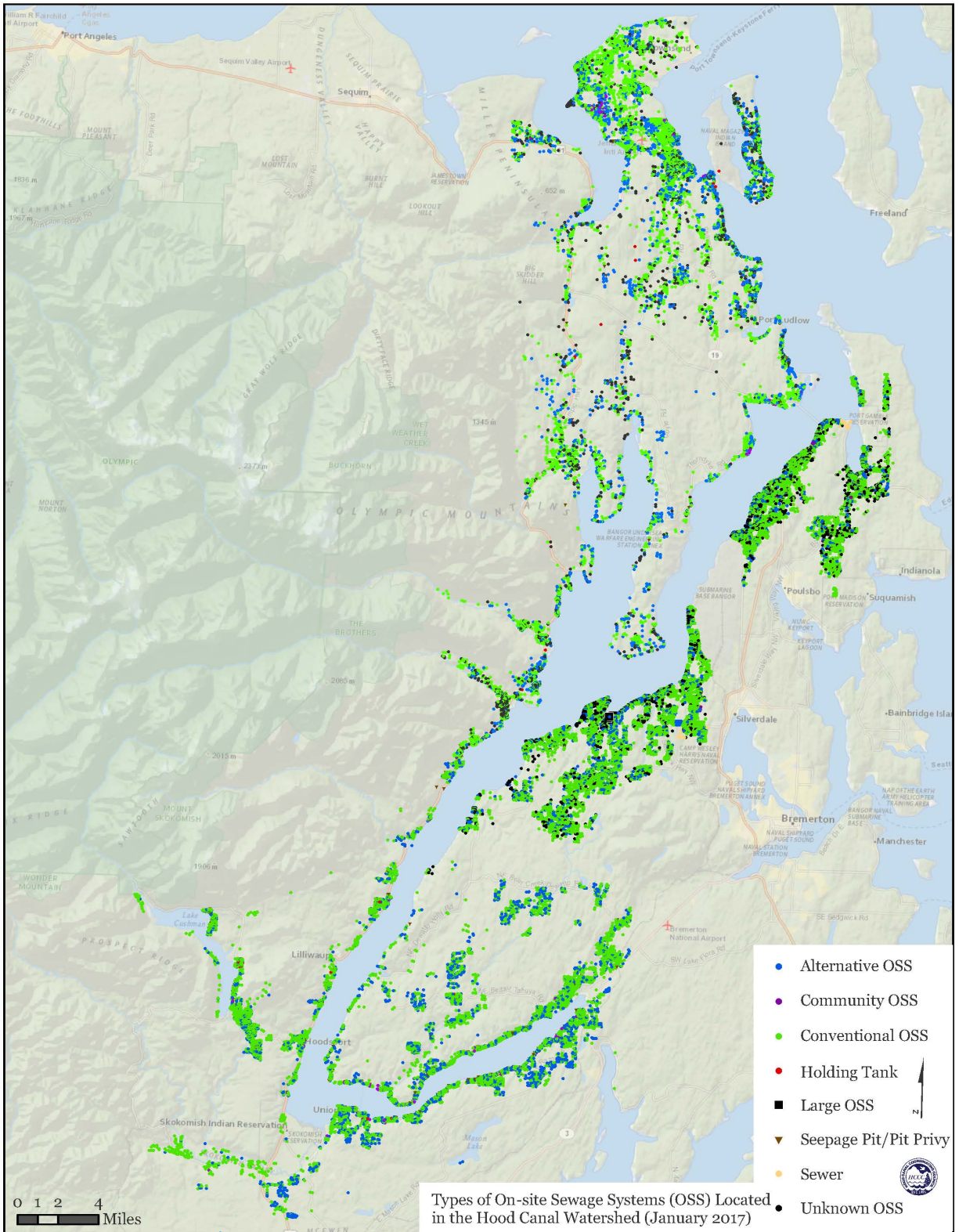


Figure A-10: Types of On-site Sewage Systems (OSS) Located in the Hood Canal Watershed (January 2017)

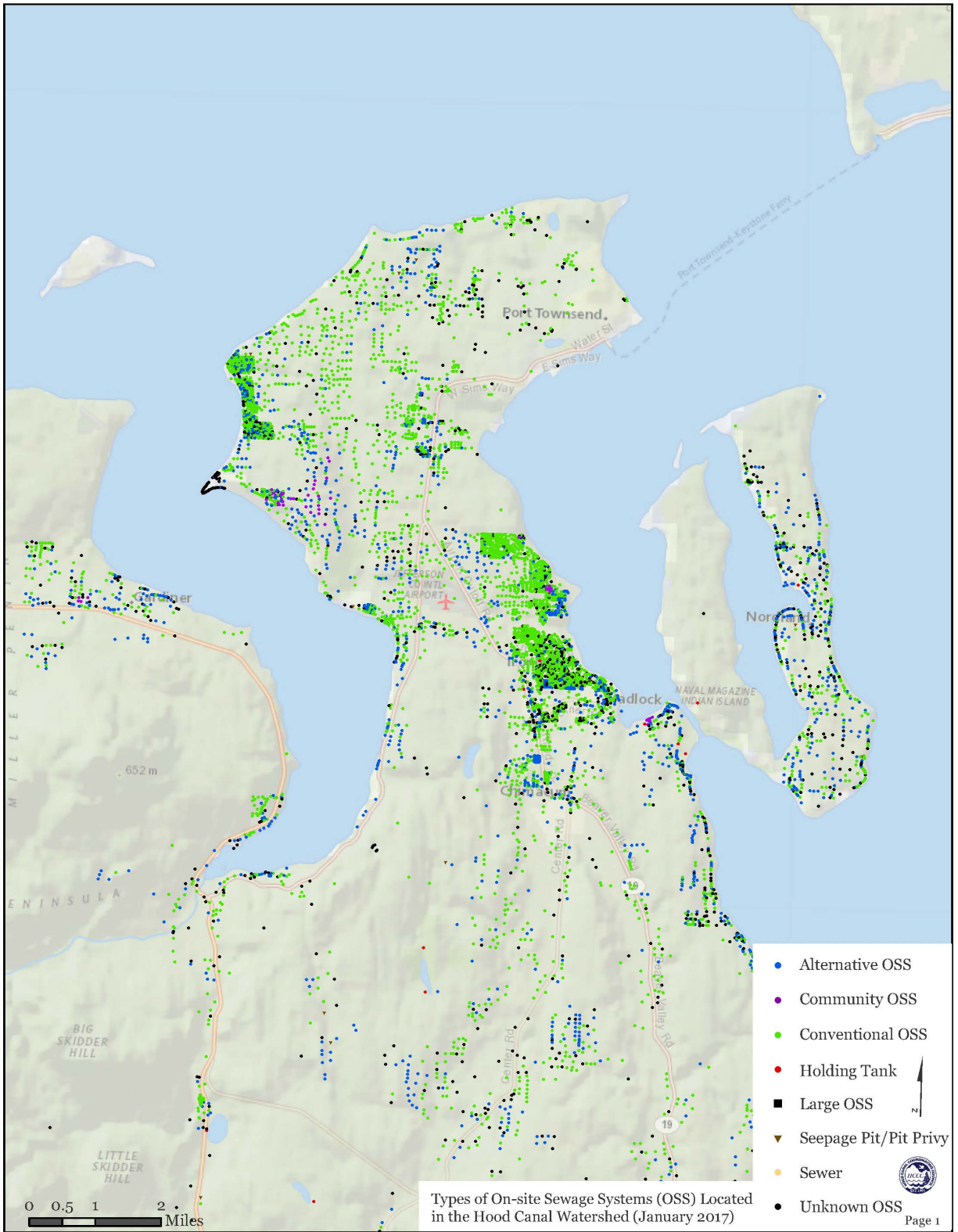


Figure A-11: Map Atlas of Types of On-site Sewage Systems (OSS) Located in the Hood Canal Watershed (January 2017), page 1 of 7

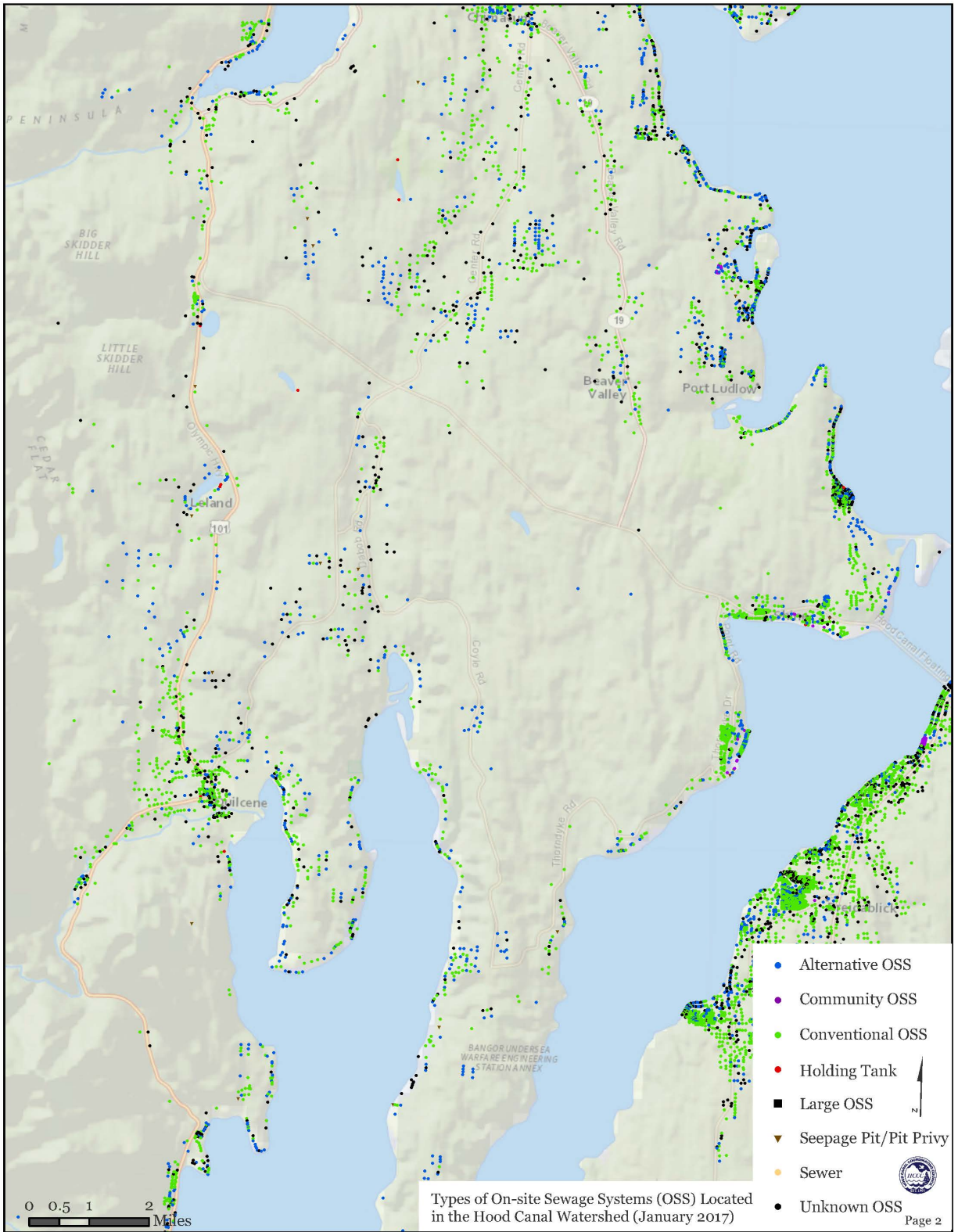


Figure A-11: Map Atlas of Types of On-site Sewage Systems (OSS) Located in the Hood Canal Watershed (January 2017), page 2 of 7

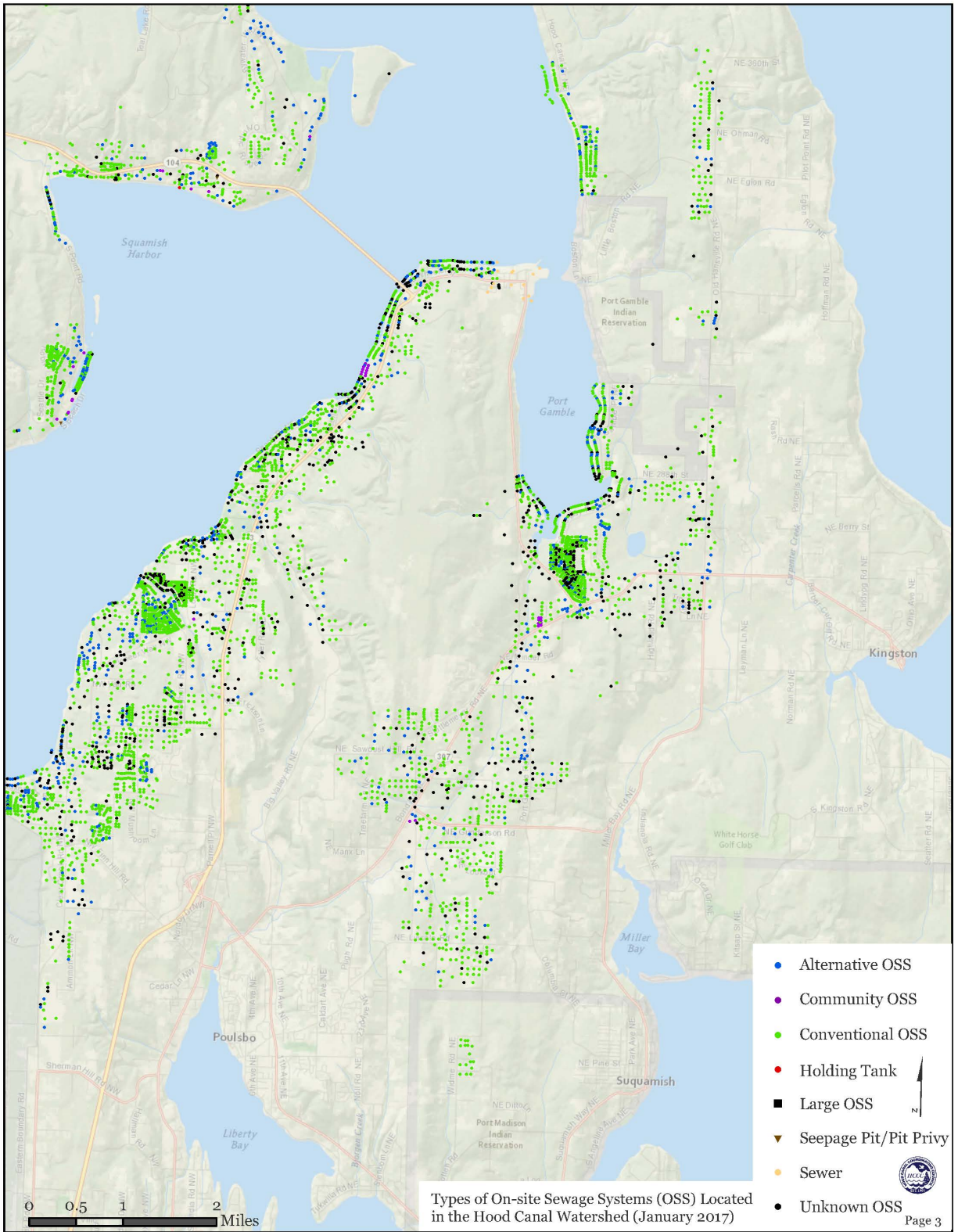


Figure A-11: Map Atlas of Types of On-site Sewage Systems (OSS) Located in the Hood Canal Watershed (January 2017), page 3 of 7

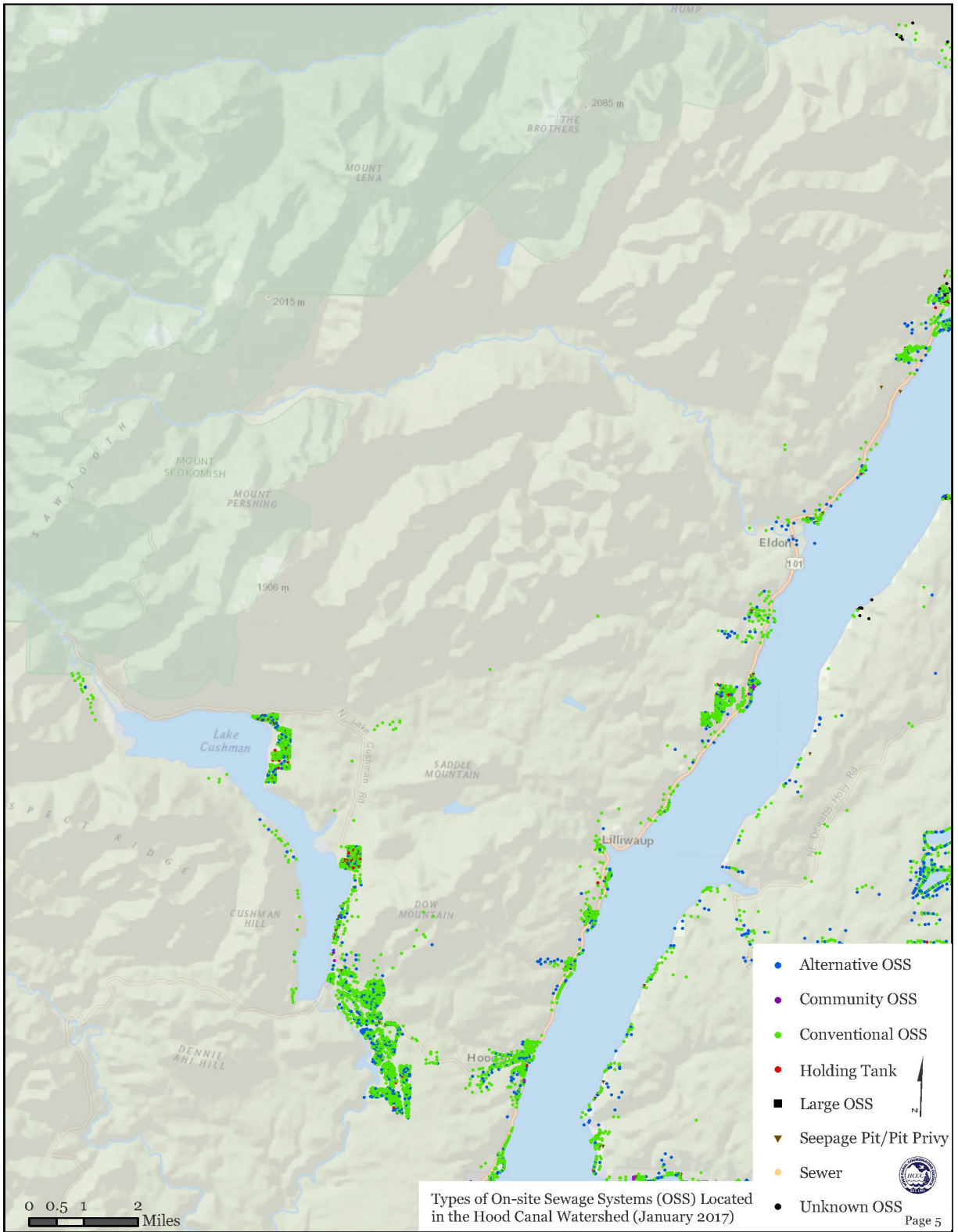


Figure A-11: Map Atlas of Types of On-site Sewage Systems (OSS) Located in the Hood Canal Watershed (January 2017), page 5 of 7

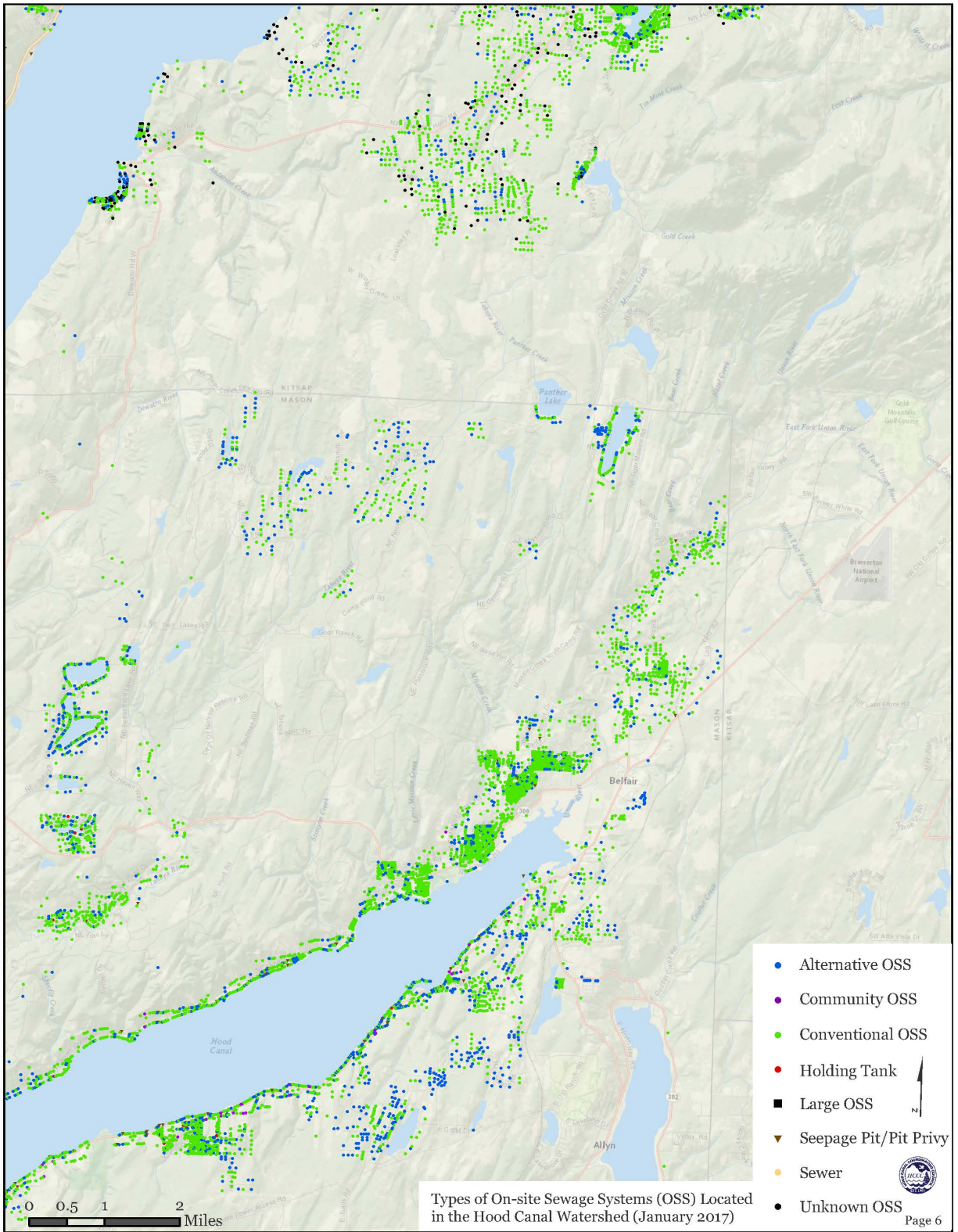


Figure A-11: Map Atlas of Types of On-site Sewage Systems (OSS) Located in the Hood Canal Watershed (January 2017), page 6 of 7

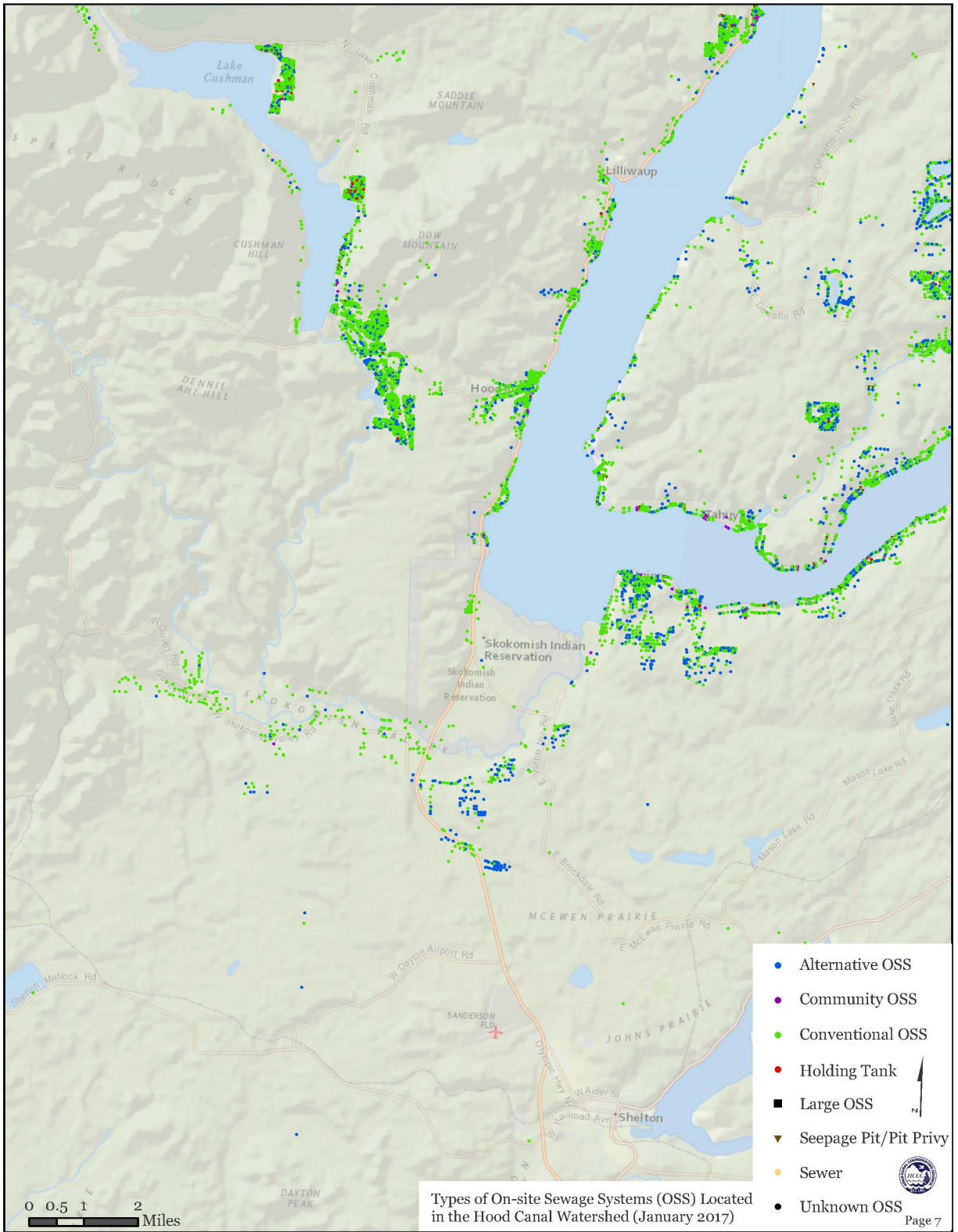


Figure A-11: Map Atlas of Types of On-site Sewage Systems (OSS) Located in the Hood Canal Watershed (January 2017), page 7 of 7

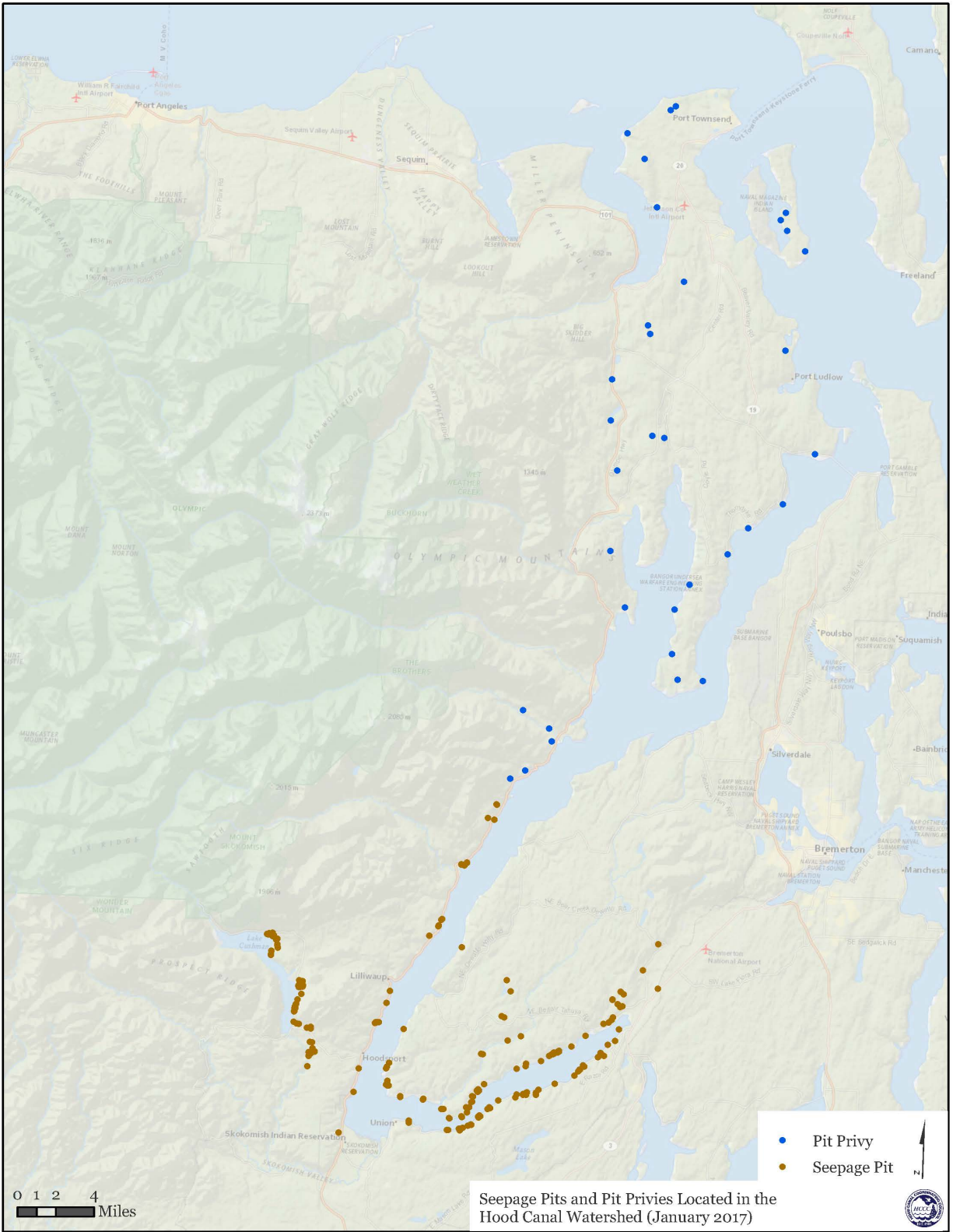


Figure A-12: Seepage Pits and Pit Privies Located in the Hood Canal Watershed (January 2017)

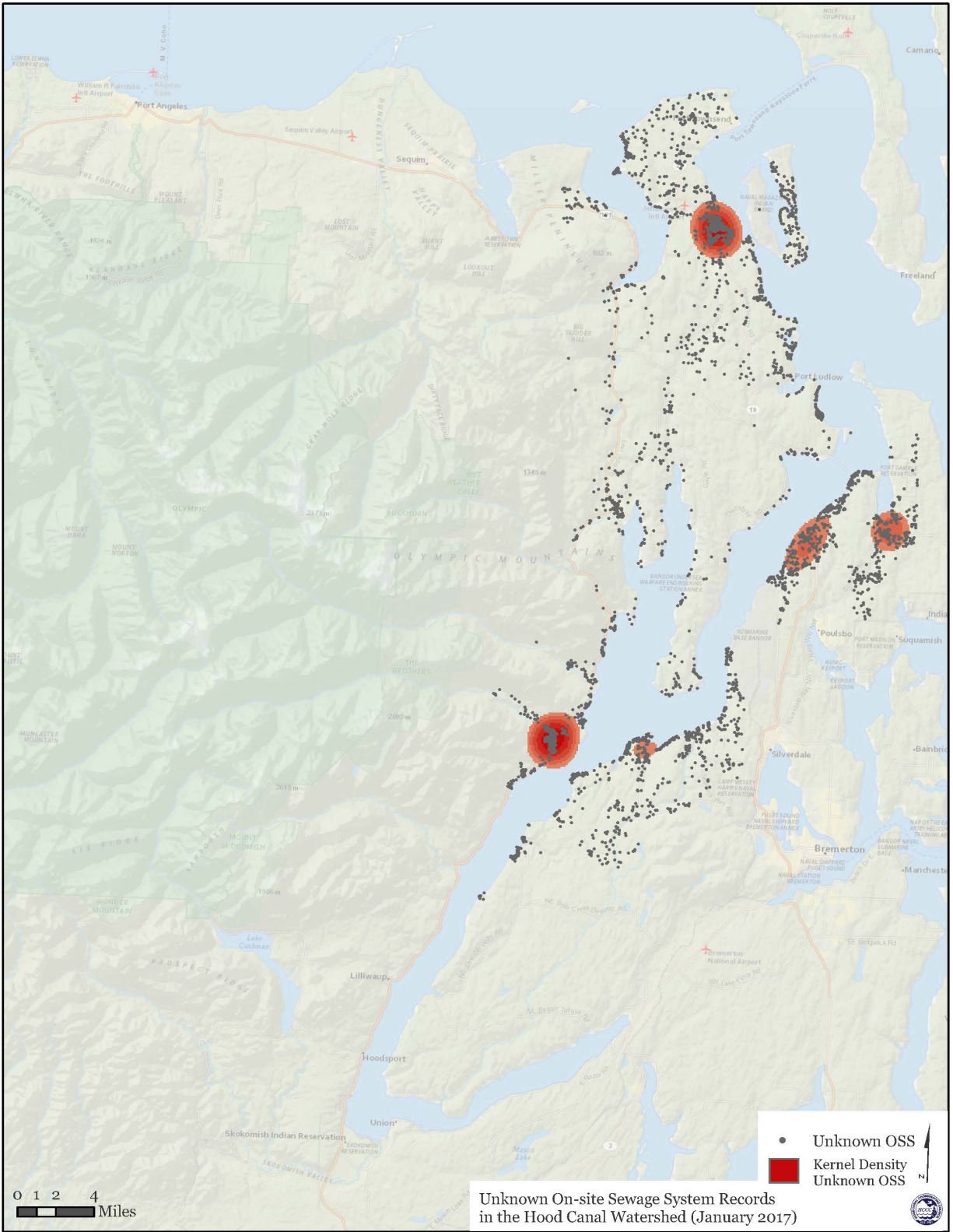


Figure A-13: Unknown On-site Sewage System Records in the Hood Canal Watershed (January 2017)