

HCCC IN-LIEU FEE MITIGATION
INTERAGENCY REVIEW TEAM (IRT) MEETING
June 19, 2018
10am – 3pm HCCC Office

IRT Participants

Suzanne Anderson, Army Corps of Engineers
Steve Todd, Suquamish Tribe
Roma Call, Port Gamble S'Klallam Tribe
Cynthia Rossi, Point No Point Treaty Council
Linda Storm, EPA
Cyrilla Cook, DNR

Non-IRT Participants

Patty Michak, Hood Canal Coordinating Council – Sponsor

Review of Meeting Agenda

- Meeting Notes:
 - May 21, 2018 notes – approved.

ACTION ITEM: HCCC to post final notes to website.

- Revised agenda topic order to move Little Anderson Bluff crediting discussion up and the work on the User's Guide to follow.

Receiving Site Updates

- Receiving Sites
 - Irene Pond – initiated weed control on field bindweed, probably a multi-year effort. Continued issues with site trespass. Will increase signage on property and work with GPC.
 - Myrvang – looking at revising planting plan in the draft Mitigation Plan in the reed canarygrass areas. Currently proposing willow poles but may revise size and density. IRT suggested adding Cottonwood for faster shade cover.
 - Little Anderson – mapped marine algae on June 13 and surprised to find an extensive eelgrass meadow. Will discuss more in the Little Anderson credit generation agenda item.
 - Olson Nearshore – mapped marine algae on June 14, some areas of eelgrass and other mixed greens and browns. Also a contractor is completing land survey of uplands and mapping of tidelands this week.
 - Little Dewatto – on-hold, scheduling meetings with adjoining landowners.
 - Seabeck property – under PSA, completed field work for Phase 1 Environmental Site Assessment and Hazardous Building Materials survey. Reports to be completed in the next few weeks.

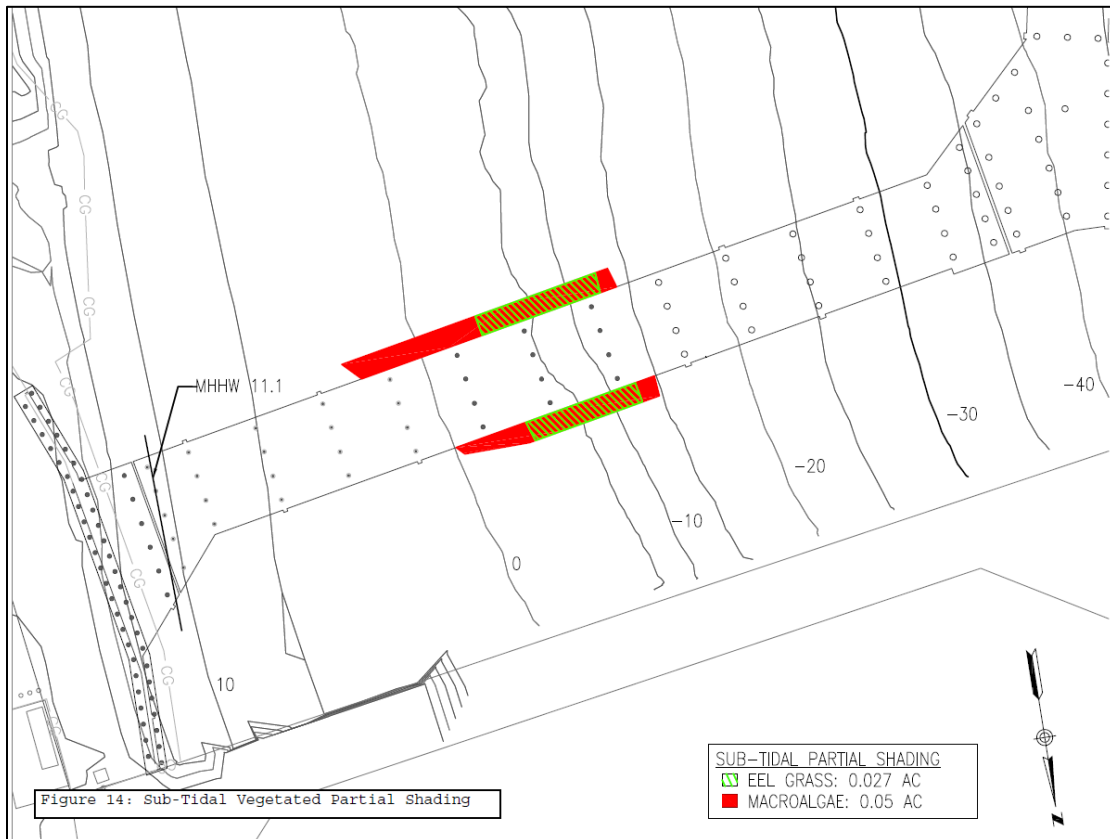
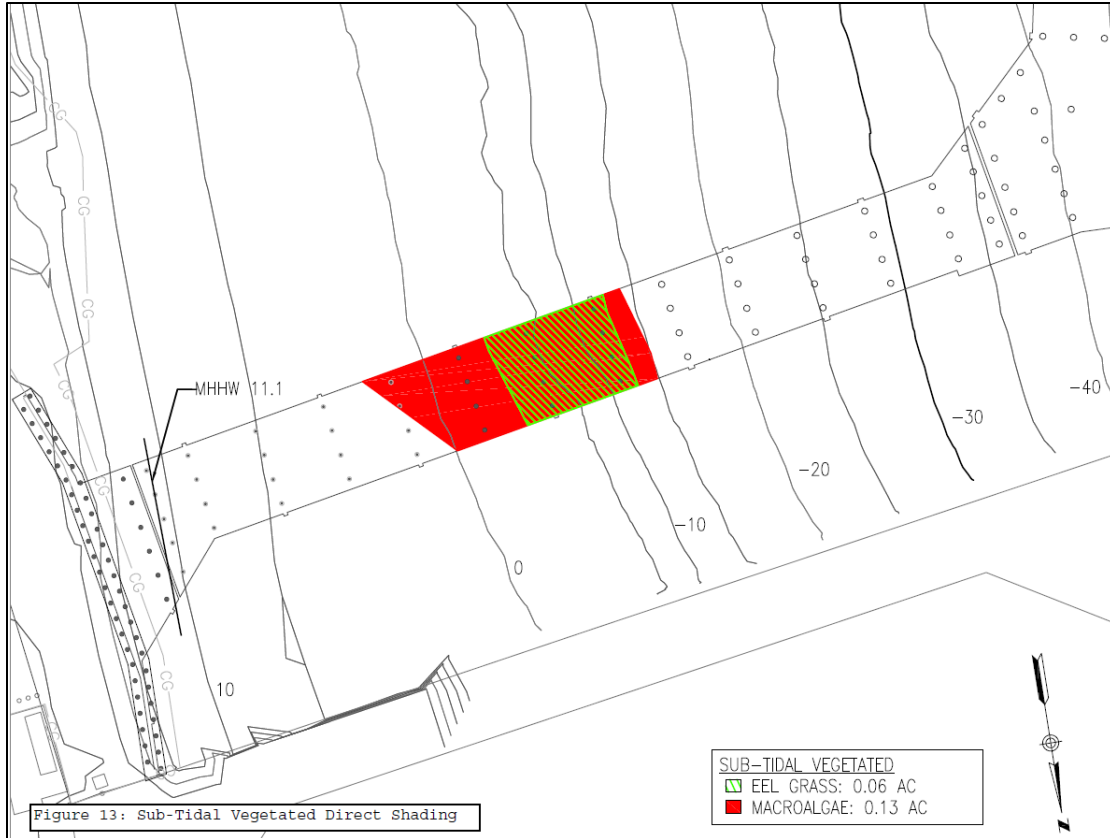
Little Anderson Bluff – review of proposed credit generation – updated with marine vegetation survey information

- An updated crediting spreadsheet and narrative of the crediting process was provided to the IRT prior to the meeting; however with the results of the marine vegetation survey this document was set-aside as the crediting structure has been revised to address the somewhat surprising extent of eelgrass and marine algae on the property.

- Marine vegetation survey was completed on June 13th during the extreme low tide series (~3.0 MLLW). IRT reviewed site photos from the survey and mapping of the different vegetation areas (see image below).



- The survey identified three areas of vegetated habitat: 1) 0.8 acres of predominantly *Ulva* with mixed green/brown species, sparse coverage ~20%; 2) 2.12 acres predominantly eelgrass, mixed native (*Zostera marina* and non-native *Z. japonica*), dense 85-100% coverage; and 3) 0.7 acres eelgrass predominantly *Z. marina*, extends off-site into subtidal water, 100% coverage. Total marine vegetative cover = 3.62 acres. Non-vegetated area = 2.44 acres.
- Proposing four credit generating areas on the property: 1) intertidal non-vegetated; 2) intertidal vegetated; 3) marine riparian lower (below the top of bluff) and 4) marine riparian upper (top of bluff to southern extent of the property).
- Review of EHW2 Use Plan for clarification on the transfer of vegetated intertidal impacts to subtidal vegetated habitat class. From the EHW2 Use Plan there is limited discussion on why the intertidal vegetated habitat impacts were transferred to the subtidal vegetated habitat class.
- The EHW2 Use Plan defined intertidal habitat to occur from HAT to -30.0 feet MLLW.
- We are utilizing a definition of intertidal to be from OHWM to -4.5 feet MLLW; subtidal habitat would be greater than -4.5 feet MLLW.
- In reviewing Figures 13 and 14 of the EHW2 Use Plan (see below) it was estimated that approximately 50% of the vegetated habitat impacts occur within our current intertidal habitat area, or from OHWM to -4.5 MLLW.
- IRT determined we need to look at what was lost to what habitats we have on-site and determine what crediting matches best and is reasonable.



- The IRT determined that it was appropriate to reclassify one half of the EHW2 subtidal vegetated habitat class debits to intertidal. The crediting worksheet will divide the subtidal vegetated credits sold for EHW2 equally between the subtidal vegetated habitat class and the intertidal vegetated habitat class.
- This results in 1.21 debits per class.
- Intertidal vegetated credits accrued from Little Anderson Bluff will first be used to fulfill the intertidal vegetated debits and then the residual acreage will be used to fulfill the out-of-kind subtidal vegetated debits.
- The IRT reviewed the application of out-of-kind mitigation for transfer of intertidal vegetated habitat credits to subtidal vegetated habitat credits.
- The IRT agreed on the following Conversion Factors (CF) for Little Anderson Bluff:
 - Intertidal Vegetated out-of-kind for subtidal vegetated CF = 4
 - Intertidal Vegetated for debit transfer from subtidal to intertidal CF = 2
 - Intertidal non-vegetated CF = 2
 - Riparian Lower area CF = 2
 - Riparian Upper area CF = 3

ACTION ITEM: HCCC to provide updated spreadsheet and narrative for IRT review and discussion at next meeting.

User's Guide Working Session

- The IRT continued work on the document and worked through to the end of the document.
- A revised draft of the User's Guide will be provided to the IRT for use at the next meeting where we will apply the Guide to some example projects.

ACTION ITEM: HCCC to provide revised draft of the User's Guide.

Future Meetings

- HCCC to send out Doodle Polls for meeting in August, September and October.